

Anti-IRF6 Mouse Monoclonal Antibody [Clone ID: OTI2C10]

Catalog Number: M01822-1

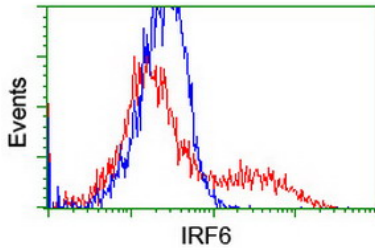
Overview

Product Name	Anti-IRF6 Mouse Monoclonal Antibody [Clone ID: OTI2C10]
Reactive Species	Dog, Human, Mouse, Rat
Description	Boster Bio IRF6 mouse monoclonal antibody, clone OTI2C10 (formerly 2C10). Catalog# M01822-1. Tested in FC, IF, IHC, WB. This antibody reacts with Human, Mouse, Rat, Dog.
Conjugate	Unconjugated
Application	Flow Cytometry, IF, IHC, WB
Clonality	Monoclonal OTI2C10
Formulation	PBS (pH 7.3) containing 1% stabilizing protein, 50% glycerol and 0.02% sodium azide. This antibody is supplied in a stabilized formulation. Compatibility with conjugation reactions depends on the chemistry of the conjugation method used. For conjugation methods that are not compatible with the stabilizing components present in this formulation, a carrier-free antibody format is required.
Storage Instructions	Store at -20°C for one year. For short term storage and frequent use, store at 4°C for up to one month. Avoid repeated freeze-thaw cycles.
Host	Mouse
Uniprot ID	O14896

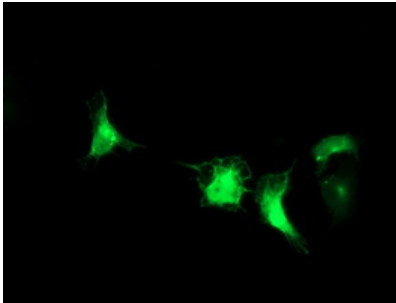
Technical Details

Immunogen	Full length human recombinant protein of human IRF6 (NP_006138) produced in HEK293T cell.
Isotype	IgG1
Concentration	0.54 mg/ml
Purification	Purified from mouse ascites fluids or tissue culture supernatant by affinity chromatography (protein A/G)
Suggested Dilutions	WB: 1:500~2000 IHC: 1:150 IF: 1:100 Flow cytometry: 1:100

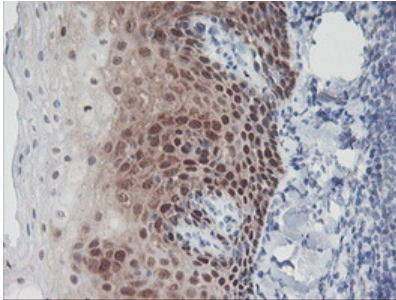
Anti-IRF6 Mouse Monoclonal Antibody [Clone ID: OTI2C10] (M01822-1) Images



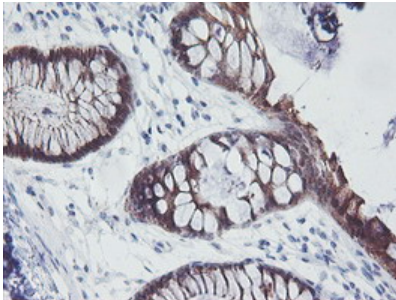
HEK293T cells transfected with either IRF6 (Myc-DDK-tagged) overexpress plasmid (Red) or empty vector control plasmid (Blue) were immunostained by anti-IRF6 antibody (M01822-1)



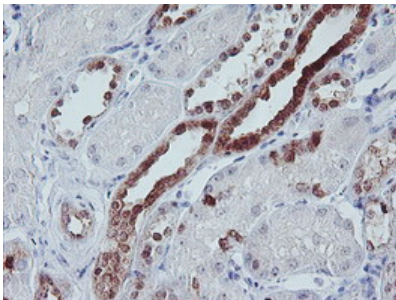
Anti-IRF6 mouse monoclonal antibody (M01822-1) immunofluorescent staining of COS7 cells transiently transfected by pCMV6-ENTRY IRF6.



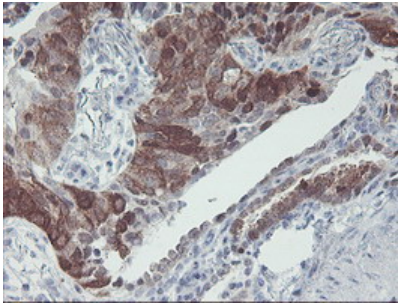
Immunohistochemical staining of paraffin-embedded Human tonsil within the normal limits using anti-IRF6 mouse monoclonal antibody. (Heat-induced epitope retrieval by 10mM citric buffer)



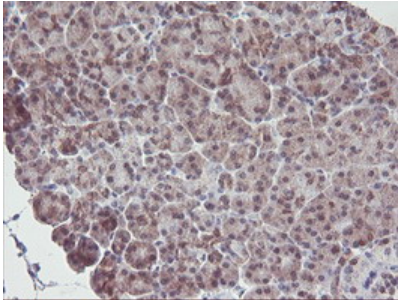
Immunohistochemical staining of paraffin-embedded Human colon tissue within the normal limits using anti-IRF6 mouse monoclonal antibody. (Heat-induced epitope retrieval by 10mM citric buffer)



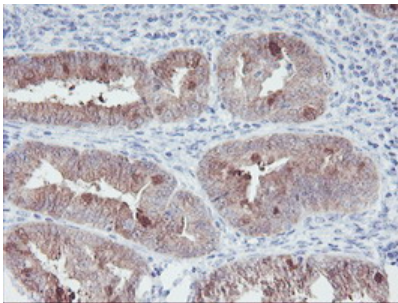
Immunohistochemical staining of paraffin-embedded Human Kidney tissue within the normal limits using anti-IRF6 mouse monoclonal antibody. (Heat-induced epitope retrieval by 10mM citric buffer)



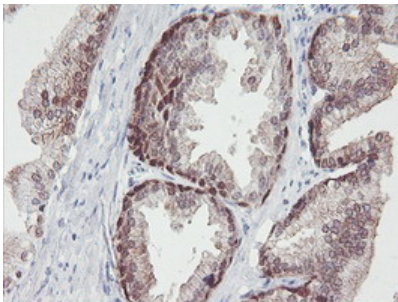
Immunohistochemical staining of paraffin-embedded Carcinoma of Human lung tissue using anti-IRF6 mouse monoclonal antibody. (Heat-induced epitope retrieval by 10mM citric buffer)



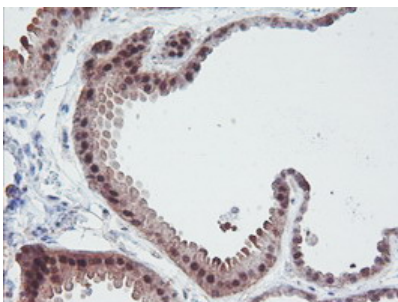
Immunohistochemical staining of paraffin-embedded Human pancreas tissue within the normal limits using anti-IRF6 mouse monoclonal antibody. (Heat-induced epitope retrieval by 10mM citric buffer)



Immunohistochemical staining of paraffin-embedded Adenocarcinoma of Human endometrium tissue using anti-IRF6 mouse monoclonal antibody. (Heat-induced epitope retrieval by 10mM citric buffer)

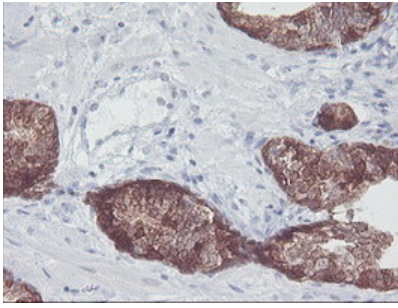


Immunohistochemical staining of paraffin-embedded Human prostate tissue within the normal limits using anti-IRF6 mouse monoclonal antibody. (Heat-induced epitope retrieval by 10mM citric buffer)

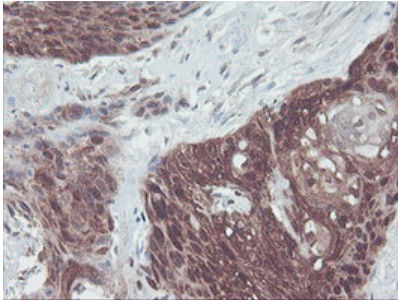


Immunohistochemical staining of paraffin-embedded Human breast tissue within the normal limits using anti-IRF6 mouse monoclonal antibody. (Heat-induced epitope retrieval by 10mM citric buffer)

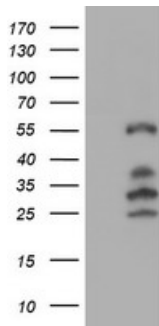
Immunohistochemical staining of paraffin-embedded Carcinoma of Human prostate tissue using anti-IRF6 mouse



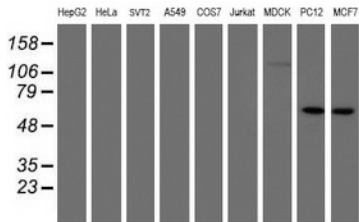
monoclonal antibody. (Heat-induced epitope retrieval by 10mM citric buffer)



Immunohistochemical staining of paraffin-embedded Carcinoma of Human bladder tissue using anti-IRF6 mouse monoclonal antibody. (Heat-induced epitope retrieval by 10mM citric buffer)



HEK293T cells were transfected with the pCMV6-ENTRY control (Left lane) or pCMV6-ENTRY IRF6 (Right lane) cDNA for 48 hrs and lysed. Equivalent amounts of cell lysates (5 ug per lane) were separated by SDS-PAGE and immunoblotted with anti-IRF6.



Western blot analysis of extracts (35ug) from 9 different cell lines by using anti-IRF6 monoclonal antibody.

Submit a product review to Biocompare.com

Submit a review of this product to Biocompare.com to receive a \$20 Amazon.com giftcard! Your reviews help your fellow scientists make the right decisions. Thank you for your contribution.



Anti-IRF6 Mouse Monoclonal Antibody [Clone ID: OT12C10]

For Research Use Only. Not for use in diagnostic procedures.