

## Anti-GLB1 Mouse Monoclonal Antibody [Clone ID: OTI1C9]

Catalog Number: M01829

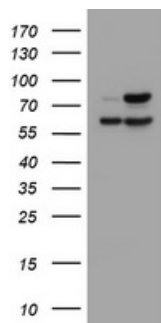
### Overview

Product Name	Anti-GLB1 Mouse Monoclonal Antibody [Clone ID: OTI1C9]
Reactive Species	Dog, Human, Monkey
Description	Boster Bio GLB1 mouse monoclonal antibody, clone OTI1C9 (formerly 1C9). Catalog# M01829. Tested in IHC, WB. This antibody reacts with Human, Monkey, Dog.
Application	IHC, WB
Clonality	Monoclonal OTI1C9
Formulation	PBS (pH 7.3) containing 1% stabilizing protein, 50% glycerol and 0.02% sodium azide. This antibody is supplied in a stabilized formulation. Compatibility with conjugation reactions depends on the chemistry of the conjugation method used. For conjugation methods that are not compatible with the stabilizing components present in this formulation, a carrier-free antibody format is required.
Storage Instructions	Store at -20°C as received.
Host	Mouse
Uniprot ID	P16278

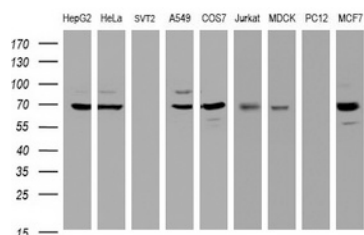
### Technical Details

Immunogen	Full length human recombinant protein of human GLB1 (NP_001073279) produced in HEK293T cell.
Isotype	IgG2a
Concentration	1 mg/ml
Purification	Purified from mouse ascites fluids or tissue culture supernatant by affinity chromatography (protein A/G)
Suggested Dilutions	WB 1:500 IHC 1:150

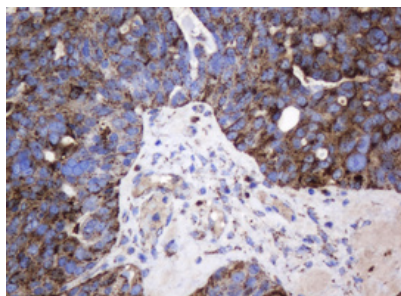
## Anti-GLB1 Mouse Monoclonal Antibody [Clone ID: OTI1C9] (M01829) Images



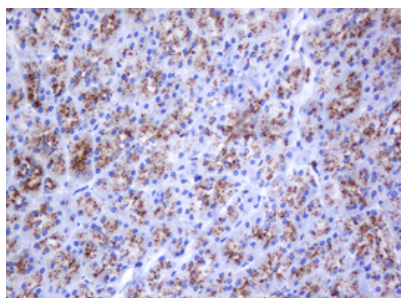
HEK293T cells were transfected with the pCMV6-ENTRY control (Left lane) or pCMV6-ENTRY GLB1 (Right lane) cDNA for 48 hrs and lysed. Equivalent amounts of cell lysates (5 ug per lane) were separated by SDS-PAGE and immunoblotted with anti-GLB1.



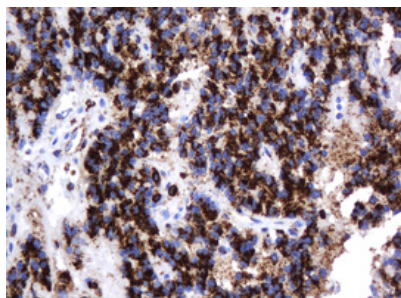
Western blot analysis of extracts (35ug) from 9 different cell lines by using anti-GLB1 monoclonal antibody (HepG2: human; HeLa: human; SVT2: mouse; A549: human; COS7: monkey; Jurkat: human; MDCK: canine; PC12: rat; MCF7: human).



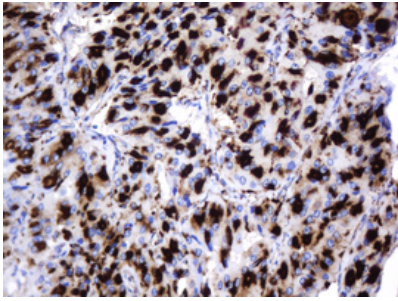
Immunohistochemical staining of paraffin-embedded Adenocarcinoma of Human ovary tissue using anti-GLB1 mouse monoclonal antibody. (Heat-induced epitope retrieval by 10mM citric buffer)



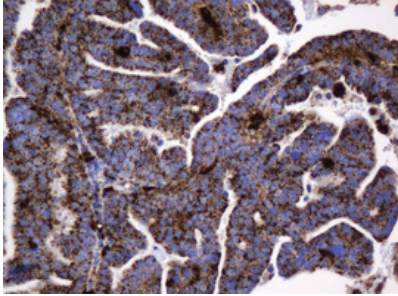
Immunohistochemical staining of paraffin-embedded Human pancreas tissue within the normal limits using anti-GLB1 mouse monoclonal antibody. (Heat-induced epitope retrieval by 10mM citric buffer)



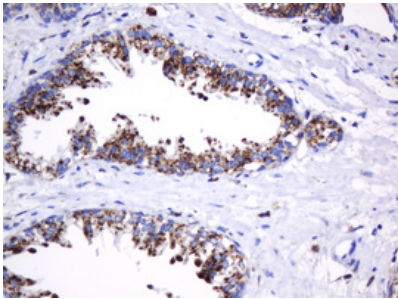
Immunohistochemical staining of paraffin-embedded Carcinoma of Human pancreas tissue using anti-GLB1 mouse monoclonal antibody. (Heat-induced epitope retrieval by 10mM citric buffer)



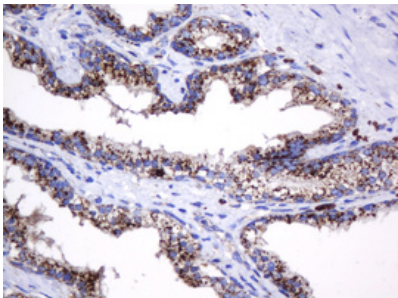
Immunohistochemical staining of paraffin-embedded Carcinoma of Human thyroid tissue using anti-GLB1 mouse monoclonal antibody. (Heat-induced epitope retrieval by 10mM citric buffer)



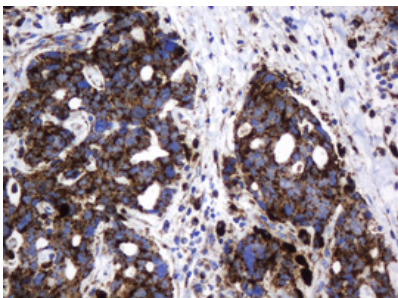
Immunohistochemical staining of paraffin-embedded Adenocarcinoma of Human endometrium tissue using anti-GLB1 mouse monoclonal antibody. (Heat-induced epitope retrieval by 10mM citric buffer)



Immunohistochemical staining of paraffin-embedded Human prostate tissue within the normal limits using anti-GLB1 mouse monoclonal antibody. (Heat-induced epitope retrieval by 10mM citric buffer)

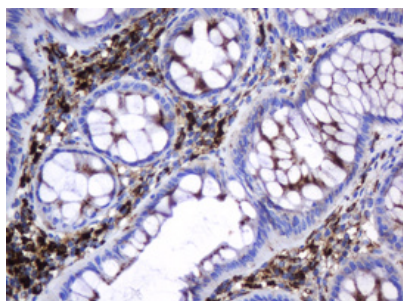


Immunohistochemical staining of paraffin-embedded Carcinoma of Human prostate tissue using anti-GLB1 mouse monoclonal antibody. (Heat-induced epitope retrieval by 10mM citric buffer)

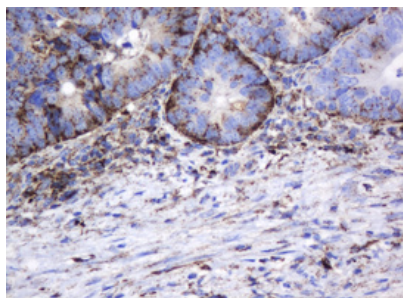


Immunohistochemical staining of paraffin-embedded Adenocarcinoma of Human breast tissue using anti-GLB1 mouse monoclonal antibody. (Heat-induced epitope retrieval by 10mM citric buffer)

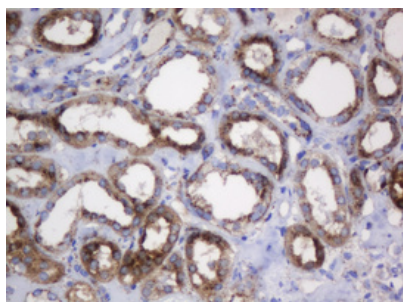
Immunohistochemical staining of paraffin-embedded Human colon tissue within the normal limits using anti-GLB1 mouse monoclonal antibody. (Heat-induced epitope retrieval by



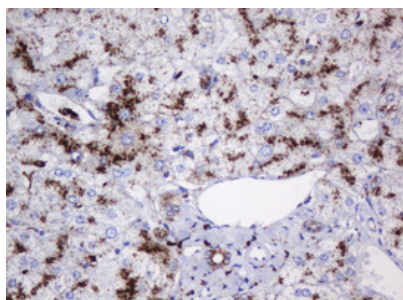
10mM citric buffer



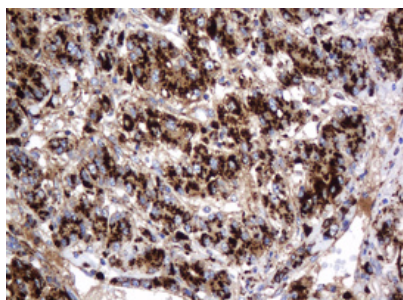
Immunohistochemical staining of paraffin-embedded Adenocarcinoma of Human colon tissue using anti-GLB1 mouse monoclonal antibody. (Heat-induced epitope retrieval by 10mM citric buffer)



Immunohistochemical staining of paraffin-embedded Human Kidney tissue within the normal limits using anti-GLB1 mouse monoclonal antibody. (Heat-induced epitope retrieval by 10mM citric buffer)



Immunohistochemical staining of paraffin-embedded Human liver tissue within the normal limits using anti-GLB1 mouse monoclonal antibody. (Heat-induced epitope retrieval by 10mM citric buffer)



Immunohistochemical staining of paraffin-embedded Carcinoma of Human liver tissue using anti-GLB1 mouse monoclonal antibody. (Heat-induced epitope retrieval by 10mM citric buffer)

**Submit a product review to Biocompare.com**

Submit a review of this product to Biocompare.com to receive a \$20 Amazon.com giftcard! Your



reviews help your fellow scientists make the right decisions. Thank you for your contribution.

Anti-GLB1 Mouse Monoclonal Antibody [Clone ID: OT11C9]

For Research Use Only. Not for use in diagnostic procedures.