

Anti-CXCL11 Rabbit Monoclonal Antibody

Catalog Number: M01833

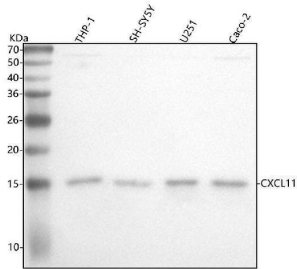
Overview

| | |
|----------------------|--|
| Product Name | Anti-CXCL11 Rabbit Monoclonal Antibody |
| Reactive Species | Human |
| Description | Boster Bio Anti-CXCL11 Rabbit Monoclonal Antibody catalog # M01833. Tested in WB, ICC/IF applications. This antibody reacts with Human. |
| Application | IF, ICC, WB |
| Clonality | Monoclonal 18C54 |
| Formulation | Rabbit IgG in stabilizing components, phosphate buffered saline, pH 7.4, 150mM NaCl, 0.02% sodium azide and 50% glycerol. *This antibody is supplied in a stabilized formulation. Compatibility with conjugation reactions depends on the chemistry of the conjugation method used. For conjugation methods that are not compatible with the stabilizing components present in this formulation, a carrier-free antibody format is required. |
| Storage Instructions | Store at -20°C for one year. For short term storage and frequent use, store at 4°C for up to one month. Avoid repeated freeze-thaw cycles. |
| Host | Rabbit |
| Uniprot ID | O14625 |

Technical Details

| | |
|---------------------|---|
| Immunogen | A synthesized peptide derived from human CXCL11 |
| Isotype | IgG |
| Form | Liquid |
| Concentration | 0.5mg/ml |
| Purification | Affinity-chromatography |
| Suggested Dilutions | WB 1:500-2000 ICC/IF 1:50-200 |

Anti-CXCL11 Rabbit Monoclonal Antibody (M01833) Images



Western blot analysis of CXCL11 using anti-CXCL11 antibody (M01833). Electrophoresis was performed on a 5-20% SDS-PAGE gel at 70V (Stacking gel) / 90V (Resolving gel) for 2-3 hours. The sample well of each lane was loaded with 30 ug of sample under reducing conditions. Lane 1: human THP-1 whole cell lysates, Lane 2: human SH-SY5Y whole cell lysates, Lane 3: human U251 whole cell lysates, Lane 4: human CACO-2 whole cell lysates. After electrophoresis, proteins were transferred to a nitrocellulose membrane at 150 mA for 50-90 minutes. Blocked the membrane with 5% non-fat milk/TBS for 1.5 hour at RT. The membrane was incubated with rabbit anti-CXCL11 antigen affinity purified monoclonal antibody (Catalog # M01833) at 1:500 overnight at 4°C, then washed with TBS-0.1%Tween 3 times with 5 minutes each and probed with a goat anti-rabbit IgG-HRP secondary antibody at a dilution of 1:500 for 1.5 hour at RT. The signal is developed using an Enhanced Chemiluminescent detection (ECL) kit (Catalog # EK1002) with Tanon 5200 system. A specific band was detected for CXCL11 at approximately 15 kDa. The expected band size for CXCL11 is at 10 kDa.

Submit a product review to Biocompare.com

Submit a review of this product to Biocompare.com to receive a \$20 Amazon.com giftcard! Your reviews help your fellow scientists make the right decisions. Thank you for your contribution.



Anti-CXCL11 Rabbit Monoclonal Antibody

For Research Use Only. Not for use in diagnostic procedures.