

Anti-ROR2 Rabbit Monoclonal Antibody

Catalog Number: M01840-1

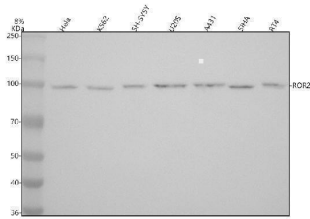
Overview

Product Name	Anti-ROR2 Rabbit Monoclonal Antibody
Reactive Species	Human
Description	Boster Bio Anti-ROR2 Rabbit Monoclonal Antibody catalog # M01840-1. Tested in WB, ICC/IF, Flow Cytometry applications. This antibody reacts with Human.
Application	Flow Cytometry, IF, ICC, WB
Clonality	Monoclonal 23R31
Formulation	Rabbit IgG in stabilizing components, phosphate buffered saline, pH 7.4, 150mM NaCl, 0.02% sodium azide and 50% glycerol. *This antibody is supplied in a stabilized formulation. Compatibility with conjugation reactions depends on the chemistry of the conjugation method used. For conjugation methods that are not compatible with the stabilizing components present in this formulation, a carrier-free antibody format is required.
Storage Instructions	Store at -20°C for one year. For short term storage and frequent use, store at 4°C for up to one month. Avoid repeated freeze-thaw cycles.
Host	Rabbit
Uniprot ID	Q01974

Technical Details

Immunogen	A synthesized peptide derived from human ROR2
Isotype	IgG
Form	Liquid
Concentration	0.5mg/ml
Purification	Affinity-chromatography
Suggested Dilutions	WB 1:500-2000 ICC/IF 1:50-200 FC 1:50

Anti-ROR2 Rabbit Monoclonal Antibody (M01840-1) Images



Western blot analysis of ROR2 using anti-ROR2 antibody (M01840-1). Electrophoresis was performed on a 5-20% SDS-PAGE gel at 70V (Stacking gel) / 90V (Resolving gel) for 2-3 hours. The sample well of each lane was loaded with 30 ug of sample under reducing conditions. Lane 1: human HeLa whole cell lysates, Lane 2: human K562 whole cell lysates, Lane 3: human SH-SY5Y whole cell lysates, Lane 4: human U2OS whole cell lysates, Lane 5: human A431 whole cell lysates, Lane 6: human SiHa whole cell lysates, Lane 7: human RT4 whole cell lysates. After electrophoresis, proteins were transferred to a nitrocellulose membrane at 150 mA for 50-90 minutes. Blocked the membrane with 5% non-fat milk/TBS for 1.5 hour at RT. The membrane was incubated with rabbit anti-ROR2 antigen affinity purified monoclonal antibody (M01840-1) at 1:500 overnight at 4°C, then washed with TBS-0.1%Tween 3 times with 5 minutes each and probed with a goat anti-rabbit IgG-HRP secondary antibody at a dilution of 1:500 for 1.5 hour at RT. The signal is developed using an Enhanced Chemiluminescent detection (ECL) kit (Catalog # EK1002) with Tanon 5200 system. A specific band was detected for ROR2 at approximately 105 kDa. The expected band size for ROR2 is at 105 kDa.

Submit a product review to [Biocompare.com](https://www.biocompare.com)

Submit a review of this product to [Biocompare.com](https://www.biocompare.com) to receive a \$20 Amazon.com giftcard! Your reviews help your fellow scientists make the right decisions. Thank you for your contribution.



Anti-ROR2 Rabbit Monoclonal Antibody

For Research Use Only. Not for use in diagnostic procedures.