

Anti-SERPINE2 Mouse Monoclonal Antibody [Clone ID: OTI2C9]

Catalog Number: M01863

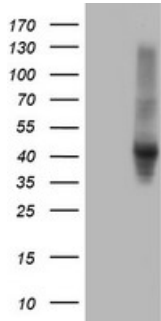
Overview

Product Name	Anti-SERPINE2 Mouse Monoclonal Antibody [Clone ID: OTI2C9]
Reactive Species	Human, Mouse
Description	Boster Bio SERPINE2 mouse monoclonal antibody, clone OTI2C9 (formerly 2C9). Catalog# M01863. Tested in FC, IHC, WB. This antibody reacts with Human, Mouse.
Application	Flow Cytometry, IHC, WB
Clonality	Monoclonal OTI2C9
Formulation	PBS (pH 7.3) containing 1% stabilizing protein, 50% glycerol and 0.02% sodium azide. This antibody is supplied in a stabilized formulation. Compatibility with conjugation reactions depends on the chemistry of the conjugation method used. For conjugation methods that are not compatible with the stabilizing components present in this formulation, a carrier-free antibody format is required.
Storage Instructions	Store at -20°C as received.
Host	Mouse
Uniprot ID	P07093

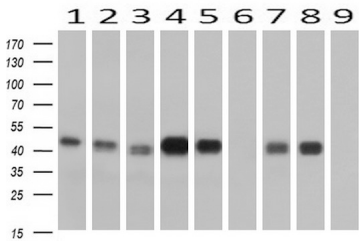
Technical Details

Immunogen	Full length human recombinant protein of human SERPINE2 (NP_006207) produced in HEK293T cell.
Isotype	IgG1
Concentration	0.76 mg/ml
Purification	Purified from mouse ascites fluids or tissue culture supernatant by affinity chromatography (protein A/G)
Suggested Dilutions	WB 1:2000 IHC 1:150 Flow Cytometry 1:100

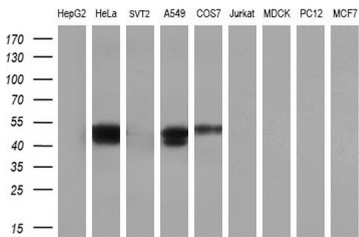
Anti-SERPINE2 Mouse Monoclonal Antibody [Clone ID: OTI2C9] (M01863) Images



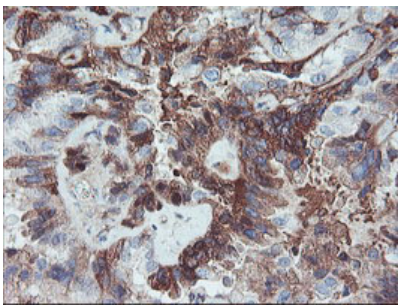
HEK293T cells were transfected with the pCMV6-ENTRY control (Left lane) or pCMV6-ENTRY SERPINE2 (Right lane) cDNA for 48 hrs and lysed. Equivalent amounts of cell lysates (5 ug per lane) were separated by SDS-PAGE and immunoblotted with anti-SERPINE2.



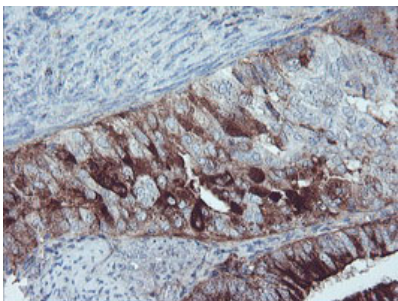
Western blot analysis of extracts (10ug) from 9 Human tissue by using anti-SERPINE2 monoclonal antibody at 1:200 (1: Testis; 2: Omentum; 3: Uterus; 4: Breast; 5: Brain; 6: Liver; 7: Ovary; 8: Thyroid gland; 9: Colon).



Western blot analysis of extracts (35ug) from 9 different cell lines by using anti-SERPINE2 monoclonal antibody (HepG2: human; HeLa: human; SVT2: mouse; A549: human; COS7: monkey; Jurkat: human; MDCK: canine; PC12: rat; MCF7: human) (1:200).

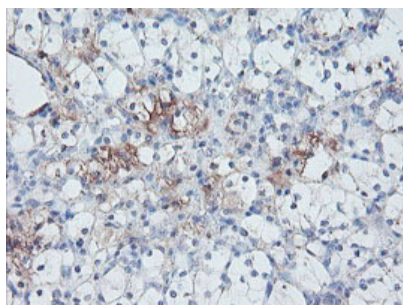


Immunohistochemical staining of paraffin-embedded Adenocarcinoma of Human ovary tissue using anti-SERPINE2 mouse monoclonal antibody. (Heat-induced epitope retrieval by 10mM citric buffer)

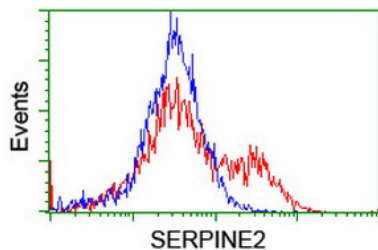


Immunohistochemical staining of paraffin-embedded Adenocarcinoma of Human endometrium tissue using anti-SERPINE2 mouse monoclonal antibody. (Heat-induced epitope retrieval by 10mM citric buffer)

Immunohistochemical staining of paraffin-embedded



Carcinoma of Human kidney tissue using anti-SERPINE2 mouse monoclonal antibody. (Heat-induced epitope retrieval by 10mM citric buffer)



HEK293T cells transfected with either SERPINE2 (Myc-DDK-tagged) overexpress plasmid (Red) or empty vector control plasmid (Blue) were immunostained by anti-SERPINE2 antibody (M01863)

Submit a product review to Biocompare.com

Submit a review of this product to Biocompare.com to receive a \$20 Amazon.com giftcard! Your reviews help your fellow scientists make the right decisions. Thank you for your contribution.



Anti-SERPINE2 Mouse Monoclonal Antibody [Clone ID: OT12C9]

For Research Use Only. Not for use in diagnostic procedures.