

Anti-c-Rel Monoclonal Antibody

Catalog Number: M01880

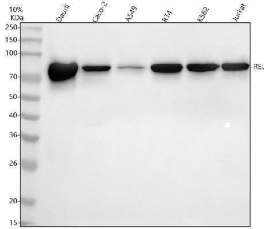
Overview

Product Name	Anti-c-Rel Monoclonal Antibody
Reactive Species	Human
Description	Boster Bio Anti-c-Rel Monoclonal Antibody catalog # M01880. Tested in WB, IP applications. This antibody reacts with Human.
Application	IP, WB
Clonality	Monoclonal ADDH-18
Formulation	Rabbit IgG in stabilizing components, phosphate buffered saline, pH 7.4, 150mM NaCl, 0.02% sodium azide and 50% glycerol. *This antibody is supplied in a stabilized formulation. Compatibility with conjugation reactions depends on the chemistry of the conjugation method used. For conjugation methods that are not compatible with the stabilizing components present in this formulation, a carrier-free antibody format is required.
Storage Instructions	Store at -20°C for one year. For short term storage and frequent use, store at 4°C for up to one month. Avoid repeated freeze-thaw cycles.
Host	Rabbit
Uniprot ID	Q04864

Technical Details

Immunogen	A synthesized peptide derived from human c-Rel c-Rel contains an amino-terminal DNA-binding domain referred to as the REL homology domain (REH) and carboxy-terminal transactivation domains. The c-Rel protein is typically inhibited in unstimulated cells by I Kappa B Alpha and I Kappa B Beta . c-Rel expression is highest in hematopoietic cells with extensive research studies demonstrating its role in immune cell function and pathogenesis of disease.
Isotype	Rabbit IgG
Form	Liquid
Concentration	0.5mg/ml
Purification	Affinity-chromatography
Suggested Dilutions	WB 1:500-2000 IP 1:20

Anti-c-Rel Monoclonal Antibody (M01880) Images



Western blot analysis of c-Rel/REL using anti-c-Rel/REL antibody (M01880). Electrophoresis was performed on a 5-20% SDS-PAGE gel at 70V (Stacking gel) / 90V (Resolving gel) for 2-3 hours. The sample well of each lane was loaded with 30 ug of sample under reducing conditions. Lane 1: human Daudi whole cell lysates, Lane 2: human Caco-2 whole cell lysates, Lane 3: human A549 whole cell lysates, Lane 4: human RT4 whole cell lysates, Lane 5: human K562 whole cell lysates, Lane 6: human Jurkat whole cell lysates. After electrophoresis, proteins were transferred to a nitrocellulose membrane at 150 mA for 50-90 minutes. Blocked the membrane with 5% non-fat milk/TBS for 1.5 hour at RT. The membrane was incubated with rabbit anti-c-Rel/REL antigen affinity purified monoclonal antibody (M01880) at 1:500 overnight at 4°C, then washed with TBS-0.1%Tween 3 times with 5 minutes each and probed with a goat anti-rabbit IgG-HRP secondary antibody at a dilution of 1:500 for 1.5 hour at RT. The signal is developed using an Enhanced Chemiluminescent detection (ECL) kit (Catalog # EK1002) with Tanon 5200 system. A specific band was detected for c-Rel/REL at approximately 78 kDa. The expected band size for c-Rel/REL is at 69 kDa.

Submit a product review to [Biocompare.com](https://www.biocompare.com)

Submit a review of this product to [Biocompare.com](https://www.biocompare.com) to receive a \$20 Amazon.com giftcard! Your reviews help your fellow scientists make the right decisions. Thank you for your contribution.



Anti-c-Rel Monoclonal Antibody

For Research Use Only. Not for use in diagnostic procedures.