

Anti-SorLA SORL1 Monoclonal Antibody

Catalog Number: M01887

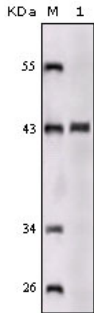
Overview

| | |
|----------------------|---|
| Product Name | Anti-SorLA SORL1 Monoclonal Antibody |
| Reactive Species | Human |
| Description | Boster Bio Anti-SorLA SORL1 Monoclonal Antibody catalog # M01887. Tested in ELISA, IF, IHC, WB applications. This antibody reacts with Human. |
| Application | ELISA, IF, IHC, WB |
| Clonality | Monoclonal 3B6B11 |
| Formulation | Ascitic fluid containing 0.03% sodium azide. |
| Storage Instructions | Store at -20°C for one year. For short term storage and frequent use, store at 4°C for up to one month. Avoid repeated freeze-thaw cycles. |
| Host | Mouse |
| Uniprot ID | Q92673 |

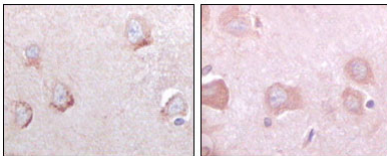
Technical Details

| | |
|---------------------|---|
| Immunogen | Purified recombinant fragment of human SorLA expressed in E. Coli. |
| Isotype | IgG |
| Form | Liquid |
| Concentration | 1 mg/ml |
| Purification | Affinity purification |
| Suggested Dilutions | WB 1:500-1:2000 IHC 1:200-1:1000 IF 1:200-1:1000 ELISA 1:10000 |

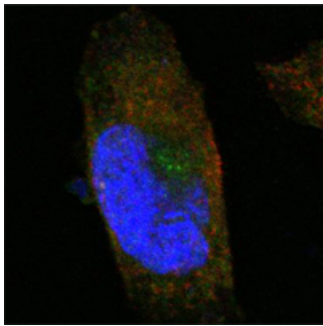
Anti-SorLA SORL1 Monoclonal Antibody (M01887) Images



Western blotting validation for Anti-SorLA SORL1 Monoclonal Antibody M01887 Western Blot (WB) analysis using SorLA Monoclonal Antibody against truncated SorLA recombinant protein. Electrophoresis was performed on a SDS-PAGE gel. To determine SDS-PAGE gel concentration



Immunohistochemistry validation of SORL1 using Anti-SorLA SORL1 Monoclonal Antibody (M01887). Immunohistochemistry (IHC) analysis of paraffin-embedded human cerebrum tissues with DAB staining using SorLA Monoclonal Antibody. For more protocol information of IHC



Immunofluorescent staining data of SORL1 using Anti-SorLA SORL1 Monoclonal Antibody (M01887). Confocal Immunofluorescence (IF) analysis of PANC-1 cells using SorLA Monoclonal Antibody (green). Red: Actin filaments have been labeled with Alexa Fluor-555 phalloidin. Blue: DRAQ5 fluorescent DNA dye.

Submit a product review to Biocompare.com

Submit a review of this product to Biocompare.com to receive a \$20 Amazon.com giftcard! Your reviews help your fellow scientists make the right decisions. Thank you for your contribution.



Anti-SorLA SORL1 Monoclonal Antibody

For Research Use Only. Not for use in diagnostic procedures.