

Anti-SorLA Rabbit Monoclonal Antibody

Catalog Number: M01887-2

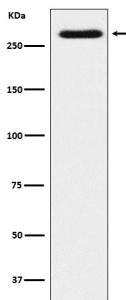
Overview

Product Name	Anti-SorLA Rabbit Monoclonal Antibody
Reactive Species	Human, Mouse, Rat
Description	Boster Bio Anti-SorLA Rabbit Monoclonal Antibody catalog # M01887-2. Tested in WB, IHC applications. This antibody reacts with Human, Mouse, Rat.
Application	IHC, WB
Clonality	Monoclonal 22S13
Formulation	Rabbit IgG in phosphate buffered saline, pH 7.4, 150mM NaCl, 0.02% sodium azide and 50% glycerol, 0.4-0.5mg/ml BSA.
Storage Instructions	Store at -20°C for one year. For short term storage and frequent use, store at 4°C for up to one month. Avoid repeated freeze-thaw cycles.
Host	Rabbit
Uniprot ID	Q92673

Technical Details

Immunogen	A synthesized peptide derived from human SorLA
Isotype	IgG
Form	Liquid
Concentration	Actual concentration vary by lot. Use suggested dilution ratio to decide dilution procedure.
Purification	Affinity-chromatography
Suggested Dilutions	WB 1:500-1:2000 IHC 1:100-1:500

Anti-SorLA Rabbit Monoclonal Antibody (M01887-2) Images



Western blot analysis of SorLA expression in SH-SY5Y cell lysate.

Submit a product review to Biocompare.com

Submit a review of this product to Biocompare.com to receive a \$20 Amazon.com giftcard! Your reviews help your fellow scientists make the right decisions. Thank you for your contribution.



Anti-SorLA Rabbit Monoclonal Antibody