

Anti-Protein C inhibitor (SERPINA5) Mouse Monoclonal Antibody [Clone ID: OTI1A12]

Catalog Number: M01916-1

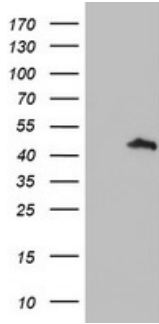
Overview

Product Name	Anti-Protein C inhibitor (SERPINA5) Mouse Monoclonal Antibody [Clone ID: OTI1A12]
Reactive Species	Dog, Human, Mouse
Description	Boster Bio SERPINA5 mouse monoclonal antibody, clone OTI1A12 (formerly 1A12). Catalog# M01916-1. Tested in WB. This antibody reacts with Human, Mouse, Dog.
Application	WB
Clonality	Monoclonal OTI1A12
Formulation	PBS (pH 7.3) containing 1% stabilizing protein, 50% glycerol and 0.02% sodium azide. This antibody is supplied in a stabilized formulation. Compatibility with conjugation reactions depends on the chemistry of the conjugation method used. For conjugation methods that are not compatible with the stabilizing components present in this formulation, a carrier-free antibody format is required.
Storage Instructions	Store at -20°C as received.
Host	Mouse
Uniprot ID	P05154

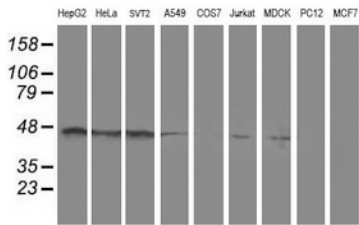
Technical Details

Immunogen	Full length human recombinant protein of human SERPINA5 (NP_000615) produced in HEK293T cell.
Isotype	IgG1
Concentration	0.54 mg/ml
Purification	Purified from mouse ascites fluids or tissue culture supernatant by affinity chromatography (protein A/G)
Suggested Dilutions	WB 1:500~2000

Anti-Protein C inhibitor (SERPINA5) Mouse Monoclonal Antibody [Clone ID: OTI1A12] (M01916-1) Images



HEK293T cells were transfected with the pCMV6-ENTRY control (Left lane) or pCMV6-ENTRY SERPINA5 (Right lane) cDNA for 48 hrs and lysed. Equivalent amounts of cell lysates (5 ug per lane) were separated by SDS-PAGE and immunoblotted with anti-SERPINA5.



Western blot analysis of extracts (35ug) from 9 different cell lines by using anti-SERPINA5 monoclonal antibody.

Submit a product review to Biocompare.com

Submit a review of this product to Biocompare.com to receive a \$20 Amazon.com giftcard! Your reviews help your fellow scientists make the right decisions. Thank you for your contribution.



Anti-Protein C inhibitor (SERPINA5) Mouse Monoclonal Antibody [Clone ID: OTI1A12]

For Research Use Only. Not for use in diagnostic procedures.