

Anti-LAP3 Rabbit Monoclonal Antibody

Catalog Number: M01921

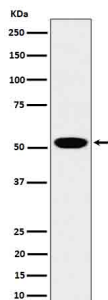
Overview

| | |
|----------------------|--|
| Product Name | Anti-LAP3 Rabbit Monoclonal Antibody |
| Reactive Species | Human |
| Description | Boster Bio Anti-LAP3 Rabbit Monoclonal Antibody catalog # M01921. Tested in WB, IHC applications. This antibody reacts with Human. |
| Application | IHC, WB |
| Clonality | Monoclonal 31L65 |
| Formulation | Rabbit IgG in stabilizing components, phosphate buffered saline, pH 7.4, 150mM NaCl, 0.02% sodium azide and 50% glycerol. *This antibody is supplied in a stabilized formulation. Compatibility with conjugation reactions depends on the chemistry of the conjugation method used. For conjugation methods that are not compatible with the stabilizing components present in this formulation, a carrier-free antibody format is required. |
| Storage Instructions | Store at -20°C for one year. For short term storage and frequent use, store at 4°C for up to one month. Avoid repeated freeze-thaw cycles. |
| Host | Rabbit |
| Uniprot ID | P28838 |

Technical Details

| | |
|---------------------|---|
| Immunogen | A synthesized peptide derived from human LAP3 |
| Isotype | IgG |
| Form | Liquid |
| Concentration | 0.5mg/ml |
| Purification | Affinity-chromatography |
| Suggested Dilutions | WB 1:500-2000 IHC 1:50-200 |

Anti-LAP3 Rabbit Monoclonal Antibody (M01921) Images



Western blot analysis of LAP3 expression in 293T cell lysate.

Submit a product review to Biocompare.com

Submit a review of this product to Biocompare.com to receive a \$20 Amazon.com giftcard! Your reviews help your fellow scientists make the right decisions. Thank you for your contribution.



Anti-LAP3 Rabbit Monoclonal Antibody

For Research Use Only. Not for use in diagnostic procedures.