

Anti-CAPN1 Antibody

Catalog Number: M01943-1

About CAPN1

Calcium-regulated non-lysosomal thiol-protease which catalyze limited proteolysis of substrates involved in cytoskeletal remodeling and signal transduction.

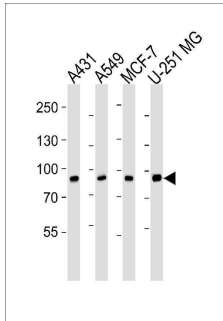
Overview

Product Name	Anti-CAPN1 Antibody
Reactive Species	Human
Description	Boster Bio Anti-CAPN1 Antibody (Catalog # M01943-1). Tested in IHC-P, Flow Cytometry, WB application(s). This antibody reacts with Human.
Application	Flow Cytometry, IHC-P, WB
Clonality	Monoclonal 1376CT809.24.85
Formulation	Purified monoclonal antibody supplied in PBS with 0.09% (W/V) sodium azide.
Storage Instructions	Maintain refrigerated at 2-8°C for up to 2 weeks. For long-term storage, store at -20°C in small aliquots to prevent freeze-thaw cycles.
Host	Mouse
Uniprot ID	P07384

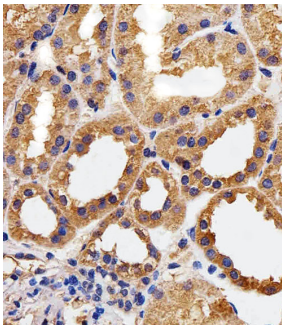
Technical Details

Immunogen	This CAPN1 antibody is generated from a mouse immunized with a KLH conjugated synthetic peptide between amino acids from the human region of human CAPN1.
Predicted Reactive Species	Bovine, Chicken, Horse, Monkey, Pig, Sheep, Xenopus
Isotype	IgG1,k
Purification	This antibody is purified through a protein G column, followed by dialysis against PBS.
Suggested Dilutions	WB: 1:1000 IHC-P: 1:25 FC: 1:25

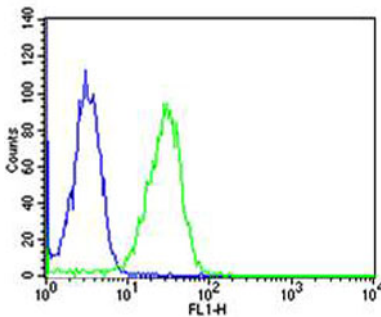
Anti-CAPN1 Antibody (M01943-1) Images



Western blot analysis of lysates from A431, A549, MCF-7, U-251 MG cell line (from left to right), using CAPN1 Antibody. M01943-1 was diluted at 1:1000 at each lane. A goat anti-mouse IgG H&L (HRP) at 1:3000 dilution was used as the secondary antibody. Lysates at 35ug per lane.



Immunohistochemical analysis of paraffin-embedded H. kidney section using CAPN1 Antibody (Cat#M01943-1). M01943-1 was diluted at 1:25 dilution. A peroxidase-conjugated goat anti-mouse IgG at 1:400 dilution was used as the secondary antibody, followed by DAB staining.



Flow cytometric analysis of HeLa cells using CAPN1 Antibody (green, Cat#M01943-1) compared to an isotype control of mouse IgG1 (blue). M01943-1 was diluted at 1:25 dilution. An Alexa Fluor® 488 goat anti-mouse IgG at 1:400 dilution was used as the secondary antibody.

Submit a product review to [Biocompare.com](https://www.biocompare.com)

Submit a review of this product to [Biocompare.com](https://www.biocompare.com) to receive a \$20 Amazon.com giftcard! Your reviews help your fellow scientists make the right decisions. Thank you for your contribution.



Anti-CAPN1 Antibody

For Research Use Only. Not for use in diagnostic procedures.