

Anti-HLA-E Purified Monoclonal Antibody

Catalog Number: M01944

About HLA-E

HLA-E (human leukocyte antigen E) is a non-classical MHC I antigen, which is important for dialogue with NK cells and their regulation through interaction with CD94/NKG2 receptor. Like other MHC I molecules, transmembrane HLA-E molecule (45 kDa) associates with beta2 microglobulin. Unlike HLA-G, expression of HLA-E molecules is not so restricted, but it has been detected at least at mRNA level in virtually all cells and tissues examined. In peripheral blood, HLA-E protein is expressed at least in all mononuclear cells, but in different quantity (B cells and monocytes more than T cells and NK cells).

Overview

Product Name	Anti-HLA-E Purified Monoclonal Antibody
Reactive Species	Human, Primate
Description	Boster Bio Anti-HLA-E Purified Monoclonal Antibody (Catalog# M01944). Tested in WB, IHC-P application(s). This antibody reacts with Human, Primate.
Application	IHC-P, WB
Clonality	Monoclonal MEM-E/02
Formulation	Phosphate buffered saline (PBS), pH 7.4, 15 mM sodium azide
Storage Instructions	Store at 2-8°C. Do not freeze.
Host	Mouse
Uniprot ID	P13747

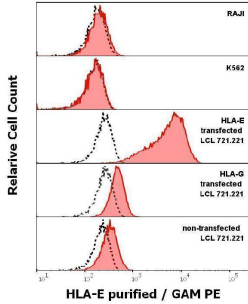
Technical Details

Immunogen	Recombinant human HLA-E denaturated heavy chain. The antibody MEM-E/02 specifically reacts with an extracellular epitope on denaturated heavy chain of human HLA-E. HLA-E belongs to the MHC Class I molecules (MHC Class Ib; nonclassical) and it is expressed on the surface of all human cell types.
Predicted Reactive Species	Primate
Cross Reactivity	This antibody does not cross-react with Thy-1.1 alloantigen.
Isotype	Mouse IgG1
Form	Liquid
Concentration	1 mg/ml
Purification	Purified by protein-A affinity chromatography.

Suggested Dilutions

Immunohistochemistry (paraffin sections): 5-10 ug/ml; positive control: human placenta; heat antigen retrieval (sodium citrate), incubation with mAb: 1 hour / RT, detection DAB.

Anti-HLA-E Purified Monoclonal Antibody (M01944) Images



Anti-Hu HLA-E purified antibody (clone MEM-E/02) specificity verification by flow cytometry. Anti-Hu HLA-E purified antibody (concentration in sample 5 µg/ml, red-filled histogram) binds specifically to surface HLA-E on surface of HLA-E transfected LCL 721.221 cells, but not to RAJI cells, K562 cells, HLA-G transfected LCL 721.221 cells and non-transfected LCL 721.221 cells. Level of non-specific binding was assessed using Mouse IgG1 isotype control PE (MOPC-21) under same conditions (concentration in sample 5 µg/ml, black-dashed histogram).

Submit a product review to Biocompare.com

Submit a review of this product to Biocompare.com to receive a \$20 Amazon.com giftcard! Your reviews help your fellow scientists make the right decisions. Thank you for your contribution.



Anti-HLA-E Purified Monoclonal Antibody

For Research Use Only. Not for use in diagnostic procedures.