

## Anti-RRM2 Monoclonal Antibody

Catalog Number: M01978

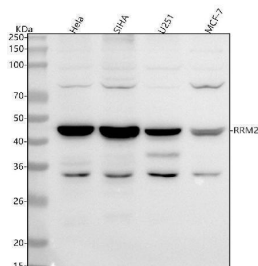
### Overview

Product Name	Anti-RRM2 Monoclonal Antibody
Reactive Species	Human
Description	Boster Bio Anti-RRM2 Monoclonal Antibody catalog # M01978. Tested in WB, ICC/IF, IP applications. This antibody reacts with Human.
Application	IP, IF, ICC, WB
Clonality	Monoclonal AEAE-18
Formulation	Rabbit IgG in stabilizing components, phosphate buffered saline, pH 7.4, 150mM NaCl, 0.02% sodium azide and 50% glycerol. *This antibody is supplied in a stabilized formulation. Compatibility with conjugation reactions depends on the chemistry of the conjugation method used. For conjugation methods that are not compatible with the stabilizing components present in this formulation, a carrier-free antibody format is required.
Storage Instructions	Store at -20°C for one year. For short term storage and frequent use, store at 4°C for up to one month. Avoid repeated freeze-thaw cycles.
Host	Rabbit
Uniprot ID	P31350

### Technical Details

Immunogen	A synthesized peptide derived from human RRM2 Provides the precursors necessary for DNA synthesis. Catalyzes the biosynthesis of deoxyribonucleotides from the corresponding ribonucleotides. Inhibits Wnt signaling.
Isotype	Rabbit IgG
Form	Liquid
Concentration	0.5mg/ml
Purification	Affinity-chromatography
Suggested Dilutions	WB 1:500-2000 ICC/IF 1:50-200 IP 1:50

## Anti-RRM2 Monoclonal Antibody (M01978) Images



Western blot analysis of RRM2 using anti-RRM2 antibody (M01978). Electrophoresis was performed on a 5-20% SDS-PAGE gel at 70V (Stacking gel) / 90V (Resolving gel) for 2-3 hours. The sample well of each lane was loaded with 30 ug of sample under reducing conditions. Lane 1: human HeLa whole cell lysates, Lane 2: human SIHA whole cell lysates, Lane 3: human U251 whole cell lysates, Lane 4: human MCF-7 whole cell lysates. After electrophoresis, proteins were transferred to a nitrocellulose membrane at 150 mA for 50-90 minutes. Blocked the membrane with 5% non-fat milk/TBS for 1.5 hour at RT. The membrane was incubated with rabbit anti-RRM2 antigen affinity purified monoclonal antibody (Catalog # M01978) at 1:500 overnight at 4°C, then washed with TBS-0.1%Tween 3 times with 5 minutes each and probed with a goat anti-rabbit IgG-HRP secondary antibody at a dilution of 1:5000 for 1.5 hour at RT. The signal is developed using an Enhanced Chemiluminescent detection (ECL) kit (Catalog # EK1002) with Tanon 5200 system. A specific band was detected for RRM2 at approximately 45 kDa. The expected band size for RRM2 is at 45 kDa.

## 1 Publications Citing This Product

1. PubMed ID: 25523932, Xu Lx, Li Zh, Tao Yf, Li Rh, Fang F, Zhao H, Li G, Li Yh, Wang J, Feng X, Pan J. J Exp Clin Cancer Res. 2014 Dec 19;33:108. Doi: 10.1186/S13046-014-0108-3. Histone Acetyltransferase Inhibitor Ii Induces Apoptosis In Glioma Cell Lines Via The P53 S...

Visit [bosterbio.com/anti-rrm2-antibody-m01978-boster.html](http://bosterbio.com/anti-rrm2-antibody-m01978-boster.html) to see all 1 publications.

## Submit a product review to Biocompare.com

Submit a review of this product to Biocompare.com to receive a \$20 Amazon.com giftcard! Your reviews help your fellow scientists make the right decisions. Thank you for your contribution.



Anti-RRM2 Monoclonal Antibody

For Research Use Only. Not for use in diagnostic procedures.