

## Anti-PROX1 Antibody (Center)

Catalog Number: M01985-2

### About PROX1

Transcription factor involved in developmental processes such as cell fate determination, gene transcriptional regulation and progenitor cell regulation in a number of organs. Plays a critical role in embryonic development and functions as a key regulatory protein in neurogenesis and the development of the heart, eye lens, liver, pancreas and the lymphatic system. Involved in the regulation of the circadian rhythm. Represses: transcription of the retinoid-related orphan receptor RORG, transcriptional activator activity of RORA and RORG and the expression of RORA/G-target genes including core clock components: ARNTL/BMAL1, NPAS2 and CRY1 and metabolic genes: AVPR1A and ELOVL3.

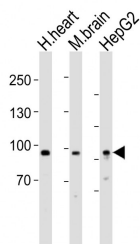
### Overview

Product Name	Anti-PROX1 Antibody (Center)
Reactive Species	Human, Mouse
Description	Boster Bio Anti-PROX1 Antibody (Center) (Catalog # M01985-2). Tested in WB application(s). This antibody reacts with Human, Mouse.
Application	WB
Clonality	Polyclonal
Formulation	Purified polyclonal antibody supplied in PBS with 0.09% (W/V) sodium azide.
Storage Instructions	Maintain refrigerated at 2-8°C for up to 2 weeks. For long-term storage, store at -20°C in small aliquots to prevent freeze-thaw cycles.
Host	Rabbit
Uniprot ID	Q92786

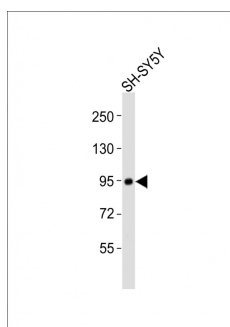
### Technical Details

Immunogen	This PROX1 antibody is generated from a rabbit immunized with a KLH conjugated synthetic peptide between 444-478 amino acids from the Central region of human PROX1.
Predicted Reactive Species	Bovine, Chicken, Horse, Monkey, Pig, Sheep, Xenopus
Isotype	Rabbit IgG
Purification	This antibody is purified through a protein A column, followed by peptide affinity purification.
Suggested Dilutions	WB: 1:2000

## Anti-PROX1 Antibody (Center) (M01985-2) Images



All lanes : Anti-PROX1 Antibody (Center) at 1:1000 dilution  
Lane 1: human heart lysates  
Lane 2: mouse brain lysates  
Lane 3: HepG2 whole cell lysates  
Lysates/proteins at 20 µg per lane. Secondary Goat Anti-Rabbit IgG, (H+L), Peroxidase conjugated at 1/10000 dilution  
Predicted band size : 83 kDa  
Blocking/Dilution buffer: 5% NFDm/TBST.



Anti-PROX1 Antibody (Center) at 1:2000 dilution + SH-SY5Y whole cell lysates  
Lysates/proteins at 20 µg per lane. Secondary Goat Anti-Rabbit IgG, (H+L), Peroxidase conjugated at 1/10000 dilution  
Predicted band size : 83 kDa  
Blocking/Dilution buffer: 5% NFDm/TBST.

### Submit a product review to [Biocompare.com](https://www.biocompare.com)

Submit a review of this product to [Biocompare.com](https://www.biocompare.com) to receive a \$20 Amazon.com giftcard! Your reviews help your fellow scientists make the right decisions. Thank you for your contribution.



Anti-PROX1 Antibody (Center)

For Research Use Only. Not for use in diagnostic procedures.