

## Anti-CDHH (CDH13) Mouse Monoclonal Antibody [Clone ID: OTI3H6]

Catalog Number: M01986

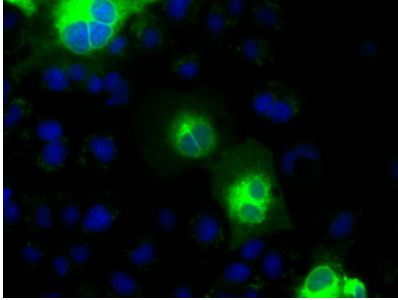
### Overview

Product Name	Anti-CDHH (CDH13) Mouse Monoclonal Antibody [Clone ID: OTI3H6]
Reactive Species	Human, Mouse, Rat
Description	Boster Bio Anti-CDH13 (H Cadherin) mouse monoclonal antibody, clone OTI3H6 (formerly 3H6). Catalog# M01986. Tested in IF, WB. This antibody reacts with Human, Mouse, Rat.
Conjugate	Unconjugated
Application	IF, WB
Clonality	Monoclonal OTI3H6
Formulation	PBS (pH 7.3) containing 1% stabilizing protein, 50% glycerol and 0.02% sodium azide. This antibody is supplied in a stabilized formulation. Compatibility with conjugation reactions depends on the chemistry of the conjugation method used. For conjugation methods that are not compatible with the stabilizing components present in this formulation, a carrier-free antibody format is required.
Storage Instructions	Store at -20°C for one year. For short term storage and frequent use, store at 4°C for up to one month. Avoid repeated freeze-thaw cycles.
Host	Mouse
Uniprot ID	P55290

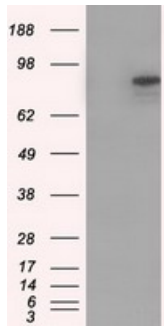
### Technical Details

Immunogen	Full length human recombinant protein of human CDH13 (NP_001248) produced in HEK293T cell.
Isotype	IgG1
Concentration	0.41 mg/ml
Purification	Purified from mouse ascites fluids or tissue culture supernatant by affinity chromatography (protein A/G)
Suggested Dilutions	WB: 1:2000 IF: 1:100

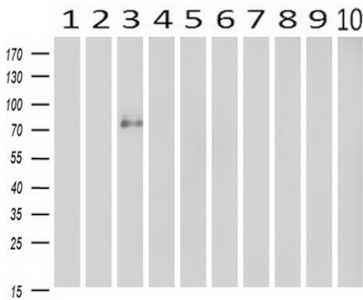
## Anti-CDHH (CDH13) Mouse Monoclonal Antibody [Clone ID: OTI3H6] (M01986) Images



Anti-CDH13 mouse monoclonal antibody (M01986) immunofluorescent staining of COS7 cells transiently transfected by pCMV6-ENTRY CDH13.



HEK293T cells were transfected with the pCMV6-ENTRY control (Left lane) or pCMV6-ENTRY CDH13 (Right lane) cDNA for 48 hrs and lysed. Equivalent amounts of cell lysates (5 ug per lane) were separated by SDS-PAGE and immunoblotted with anti-CDH13.



Western blot analysis of extracts (10ug) from 10 Human tissue by using anti-CDH13 monoclonal antibody at 1:500 (1: Testis; 2: Omentum; 3: Uterus; 4: Breast; 5: Brain; 6: Liver; 7: Ovary; 8: Thyroid gland; 9: colon; 10: spleen).

### Submit a product review to [Biocompare.com](https://www.biocompare.com)

Submit a review of this product to [Biocompare.com](https://www.biocompare.com) to receive a \$20 Amazon.com giftcard! Your reviews help your fellow scientists make the right decisions. Thank you for your contribution.



Anti-CDHH (CDH13) Mouse Monoclonal Antibody [Clone ID: OTI3H6]

For Research Use Only. Not for use in diagnostic procedures.