

## Anti-H Cadherin Rabbit Monoclonal Antibody

Catalog Number: M01986-1

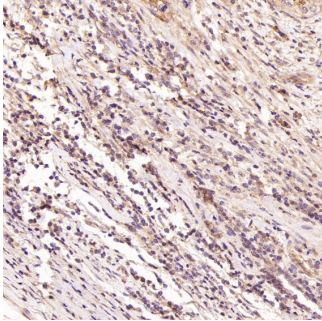
### Overview

Product Name	Anti-H Cadherin Rabbit Monoclonal Antibody
Reactive Species	Human, Mouse, Rat
Description	Boster Bio Anti-H Cadherin Rabbit Monoclonal Antibody catalog # M01986-1. Tested in WB, IHC applications. This antibody reacts with Human, Mouse, Rat.
Application	IHC, WB
Clonality	Monoclonal 20C70
Formulation	Rabbit IgG in stabilizing components, phosphate buffered saline, pH 7.4, 150mM NaCl, 0.02% sodium azide and 50% glycerol. *This antibody is supplied in a stabilized formulation. Compatibility with conjugation reactions depends on the chemistry of the conjugation method used. For conjugation methods that are not compatible with the stabilizing components present in this formulation, a carrier-free antibody format is required.
Storage Instructions	Store at -20°C for one year. For short term storage and frequent use, store at 4°C for up to one month. Avoid repeated freeze-thaw cycles.
Host	Rabbit
Uniprot ID	P55290

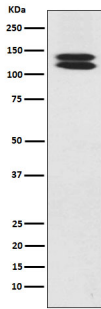
### Technical Details

Immunogen	A synthesized peptide derived from human H Cadherin
Isotype	IgG
Form	Liquid
Concentration	0.5mg/ml
Purification	Affinity-chromatography
Suggested Dilutions	WB 1:500-2000 IHC 1:50-200

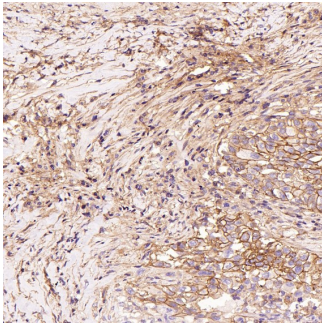
## Anti-H Cadherin Rabbit Monoclonal Antibody (M01986-1) Images



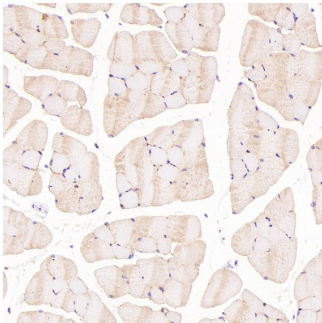
Immunohistochemical analysis of paraffin-embedded Human cervical cancer, using the Antibody at 1:100 dilution.



Western blot analysis of H Cadherin expression in Human fetal heart lysate.



Immunohistochemical analysis of paraffin-embedded Human squamous cell carcinoma, using the Antibody at 1:100 dilution.



Immunohistochemical analysis of paraffin-embedded Mouse skeletal muscle, using the Antibody at 1:100 dilution.

**Submit a product review to Biocompare.com**

Submit a review of this product to Biocompare.com to receive a \$20 Amazon.com giftcard! Your reviews help your fellow scientists make the right decisions. Thank you for your contribution.



Anti-H Cadherin Rabbit Monoclonal Antibody

For Research Use Only. Not for use in diagnostic procedures.