

## Anti-XPF (ERCC4) Mouse Monoclonal Antibody [Clone ID: OTI4E11]

Catalog Number: M01993

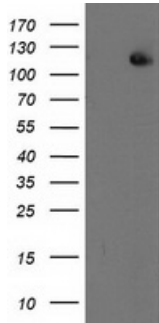
### Overview

Product Name	Anti-XPF (ERCC4) Mouse Monoclonal Antibody [Clone ID: OTI4E11]
Reactive Species	Human, Mouse
Description	Boster Bio ERCC4 mouse monoclonal antibody, clone OTI4E11 (formerly 4E11). Catalog# M01993. Tested in FC, IF, IHC, WB. This antibody reacts with Human, Mouse.
Application	Flow Cytometry, IF, IHC, WB
Clonality	Monoclonal OTI4E11
Formulation	PBS (pH 7.3) containing 1% stabilizing protein, 50% glycerol and 0.02% sodium azide. This antibody is supplied in a stabilized formulation. Compatibility with conjugation reactions depends on the chemistry of the conjugation method used. For conjugation methods that are not compatible with the stabilizing components present in this formulation, a carrier-free antibody format is required.
Storage Instructions	Store at -20°C as received.
Host	Mouse
Uniprot ID	Q92889

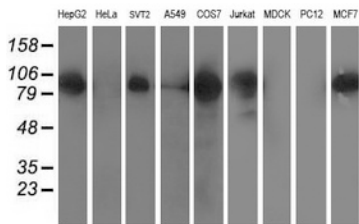
### Technical Details

Immunogen	Full length human recombinant protein of human ERCC4 (NP_005227) produced in HEK293 cell.
Isotype	IgG2a
Concentration	0.84 mg/ml
Purification	Purified from mouse ascites fluids or tissue culture supernatant by affinity chromatography (protein A/G)
Suggested Dilutions	WB 1:500~2000 IHC 1:150 IF 1:100 Flow Cytometry 1:100

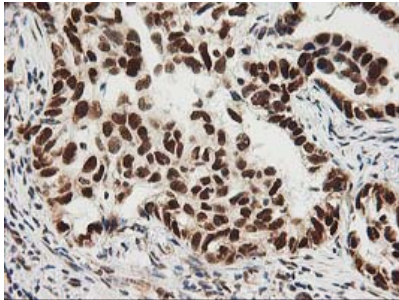
## Anti-XPF (ERCC4) Mouse Monoclonal Antibody [Clone ID: OTI4E11] (M01993) Images



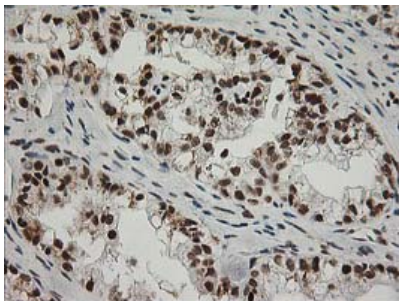
HEK293T cells were transfected with the pCMV6-ENTRY control (Left lane) or pCMV6-ENTRY ERCC4 (Right lane) cDNA for 48 hrs and lysed. Equivalent amounts of cell lysates (5 ug per lane) were separated by SDS-PAGE and immunoblotted with anti-ERCC4.



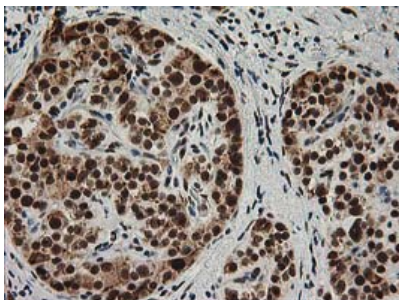
Western blot analysis of extracts (35ug) from 9 different cell lines by using anti-ERCC4 monoclonal antibody.



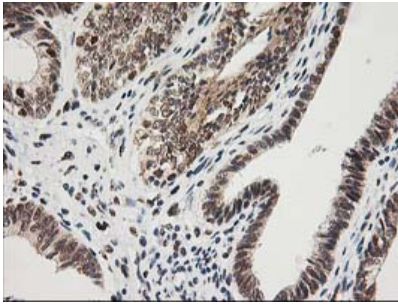
Immunohistochemical staining of paraffin-embedded Carcinoma of Human lung tissue using anti-ERCC4 mouse monoclonal antibody. (Heat-induced epitope retrieval by 10mM citric buffer)



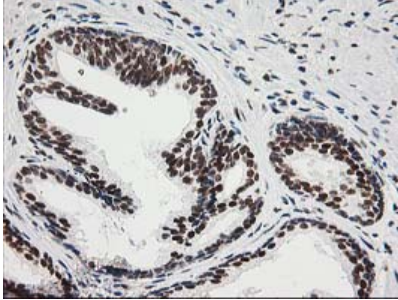
Immunohistochemical staining of paraffin-embedded Adenocarcinoma of Human ovary tissue using anti-ERCC4 mouse monoclonal antibody. (Heat-induced epitope retrieval by 10mM citric buffer)



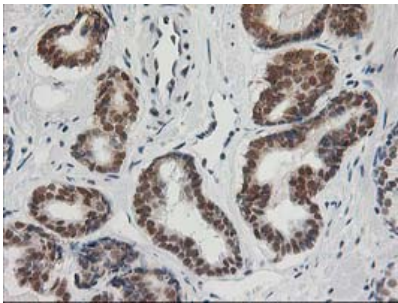
Immunohistochemical staining of paraffin-embedded Carcinoma of Human pancreas tissue using anti-ERCC4 mouse monoclonal antibody. (Heat-induced epitope retrieval by 10mM citric buffer)



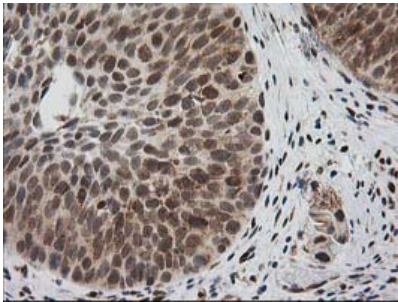
Immunohistochemical staining of paraffin-embedded Adenocarcinoma of Human endometrium tissue using anti-ERCC4 mouse monoclonal antibody. (Heat-induced epitope retrieval by 10mM citric buffer)



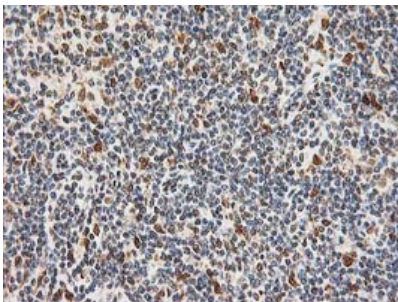
Immunohistochemical staining of paraffin-embedded Human prostate tissue within the normal limits using anti-ERCC4 mouse monoclonal antibody. (Heat-induced epitope retrieval by 10mM citric buffer)



Immunohistochemical staining of paraffin-embedded Carcinoma of Human prostate tissue using anti-ERCC4 mouse monoclonal antibody. (Heat-induced epitope retrieval by 10mM citric buffer)

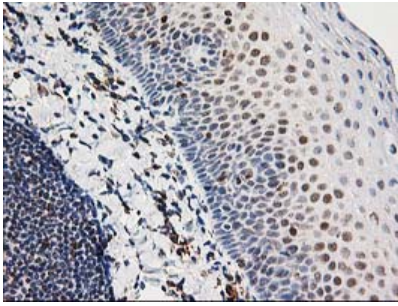


Immunohistochemical staining of paraffin-embedded Carcinoma of Human bladder tissue using anti-ERCC4 mouse monoclonal antibody. (Heat-induced epitope retrieval by 10mM citric buffer)

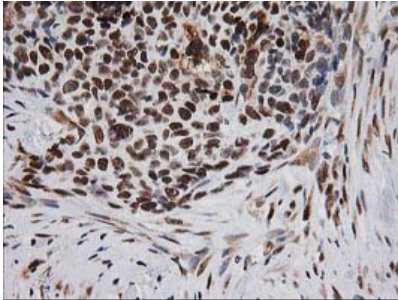


Immunohistochemical staining of paraffin-embedded Human lymphoma tissue using anti-ERCC4 mouse monoclonal antibody. (Heat-induced epitope retrieval by 10mM citric buffer)

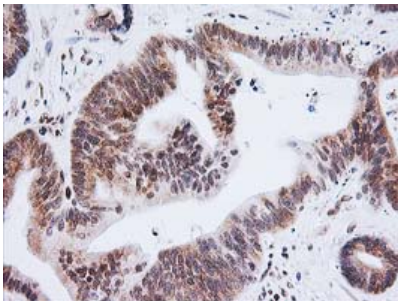
Immunohistochemical staining of paraffin-embedded Human tonsil within the normal limits using anti-ERCC4 mouse monoclonal antibody. (Heat-induced epitope retrieval by



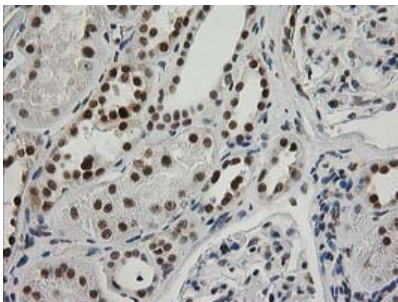
10mM citric buffer



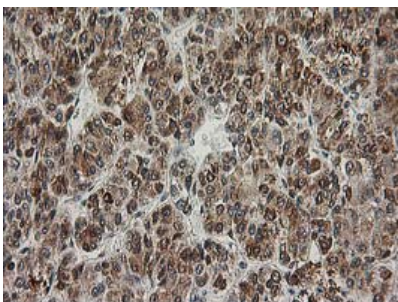
Immunohistochemical staining of paraffin-embedded Adenocarcinoma of Human breast tissue using anti-ERCC4 mouse monoclonal antibody. (Heat-induced epitope retrieval by 10mM citric buffer)



Immunohistochemical staining of paraffin-embedded Adenocarcinoma of Human colon tissue using anti-ERCC4 mouse monoclonal antibody. (Heat-induced epitope retrieval by 10mM citric buffer)

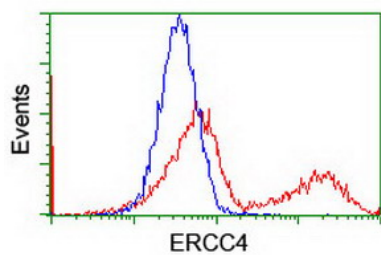


Immunohistochemical staining of paraffin-embedded Human Kidney tissue within the normal limits using anti-ERCC4 mouse monoclonal antibody. (Heat-induced epitope retrieval by 10mM citric buffer)

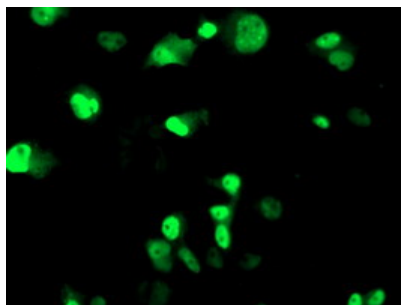


Immunohistochemical staining of paraffin-embedded Carcinoma of Human liver tissue using anti-ERCC4 mouse monoclonal antibody. (Heat-induced epitope retrieval by 10mM citric buffer)

HEK293T cells transfected with either ERCC4 (Myc-DDK-tagged) overexpress plasmid (Red) or empty vector control plasmid (Blue) were immunostained by anti-ERCC4 antibody



(M01993)



Anti-ERCC4 mouse monoclonal antibody (M01993) immunofluorescent staining of COS7 cells transiently transfected by pCMV6-ENTRY ERCC4.

### Submit a product review to Biocompare.com

Submit a review of this product to Biocompare.com to receive a \$20 Amazon.com giftcard! Your reviews help your fellow scientists make the right decisions. Thank you for your contribution.



Anti-XPF (ERCC4) Mouse Monoclonal Antibody [Clone ID: OTI4E11]

For Research Use Only. Not for use in diagnostic procedures.