

Anti-EPHX2 Mouse Monoclonal Antibody [Clone ID: OTI2G2]

Catalog Number: M01999

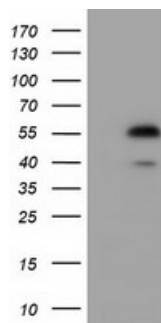
Overview

Product Name	Anti-EPHX2 Mouse Monoclonal Antibody [Clone ID: OTI2G2]
Reactive Species	Human
Description	Boster Bio Anti-EPXH2 mouse monoclonal antibody, clone OTI2G2 (formerly 2G2). Catalog# M01999. Tested in FC, IF, WB. This antibody reacts with Human.
Application	Flow Cytometry, IF, WB
Clonality	Monoclonal OTI2G2
Formulation	PBS (pH 7.3) containing 1% stabilizing protein, 50% glycerol and 0.02% sodium azide. This antibody is supplied in a stabilized formulation. Compatibility with conjugation reactions depends on the chemistry of the conjugation method used. For conjugation methods that are not compatible with the stabilizing components present in this formulation, a carrier-free antibody format is required.
Storage Instructions	Store at -20°C as received.
Host	Mouse
Uniprot ID	P34913

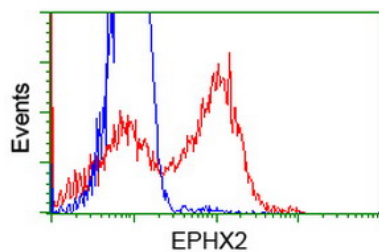
Technical Details

Immunogen	Full length human recombinant protein of human EPXH2 (NP_001970) produced in HEK293T cell.
Isotype	IgG1
Concentration	0.4 mg/ml
Purification	Purified from mouse ascites fluids or tissue culture supernatant by affinity chromatography (protein A/G)
Suggested Dilutions	WB: 1:2000 IF: 1:100 Flow Cytometry:

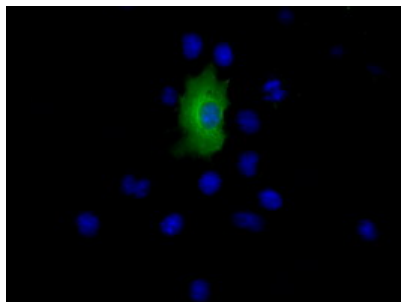
Anti-EPHX2 Mouse Monoclonal Antibody [Clone ID: OTI2G2] (M01999) Images



HEK293T cells were transfected with the pCMV6-ENTRY control (Left lane) or pCMV6-ENTRY EPHX2 (Right lane) cDNA for 48 hrs and lysed. Equivalent amounts of cell lysates (5 ug per lane) were separated by SDS-PAGE and immunoblotted with anti-EPHX2.



HEK293T cells transfected with either EPHX2 (Myc-DDK-tagged) overexpress plasmid (Red) or empty vector control plasmid (Blue) were immunostained by anti-EPHX2 antibody (M01999)



Anti-EPHX2 mouse monoclonal antibody (M01999) immunofluorescent staining of COS7 cells transiently transfected by pCMV6-ENTRY EPHX2.

Submit a product review to Biocompare.com

Submit a review of this product to Biocompare.com to receive a \$20 Amazon.com giftcard! Your reviews help your fellow scientists make the right decisions. Thank you for your contribution.



Anti-EPHX2 Mouse Monoclonal Antibody [Clone ID: OTI2G2]

For Research Use Only. Not for use in diagnostic procedures.