

## Anti-Prosurfactant Protein C/SFTPC Antibody (Monoclonal, 34S34)

Catalog Number: M02001

### About SFTPC

SFTPC(Surfactant pulmonary -associated protein C), also known as SFTP2, SPC, PSP-C or PULMONARY SURFACTANT PROTEIN SP5, is a protein that in humans is encoded by the SFTPC gene. It is a membrane protein which manufactures surfactant. Glasser et al.(1988) assigned the SFTPC gene, symbolized SFTP2 by the Human Gene Mapping nomenclature committee, to chromosome 8 by hybridization to somatic cell hybrid DNA. Wood et al.(1994) identified 4 cosmids at the SFTP2 locus by cDNA hybridization. Using a polymorphic CA repeat in the SFTP2 gene and linkage analysis in 8 CEPH families, they located the gene close to D8S298; maximum lod = 19.3 at theta = 0.01. They regionalized the gene to 8p21 by fluorescence in situ hybridization. Moore et al.(1992) showed that the corresponding mouse gene, Sftp2, maps to chromosome 14.

### Overview

Product Name	Anti-Prosurfactant Protein C/SFTPC Antibody (Monoclonal, 34S34)
Reactive Species	Human, Mouse, Rat
Description	Boster Bio Anti-Prosurfactant Protein C/SFTPC Antibody (Monoclonal, 34S34) catalog # M02001. Tested in WB, IHC, ICC/IF, Flow Cytometry applications. This antibody reacts with Human, Mouse, Rat.
Application	Flow Cytometry, IF, IHC, ICC, WB
Clonality	Monoclonal 34S34
Formulation	Rabbit IgG in stabilizing components, phosphate buffered saline, pH 7.4, 150mM NaCl, 0.02% sodium azide and 50% glycerol. This antibody is supplied in a stabilized formulation. Compatibility with conjugation reactions depends on the chemistry of the conjugation method used. For conjugation methods that are not compatible with the stabilizing components present in this formulation, a carrier-free antibody format is required.
Storage Instructions	Store at -20°C for one year. For short term storage and frequent use, store at 4°C for up to one month. Avoid repeated freeze-thaw cycles.
Host	Rabbit
Uniprot ID	P11686

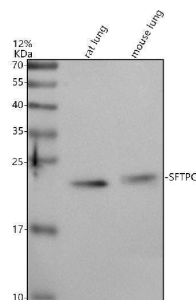
### Technical Details

Immunogen	Synthetic peptide within human Prosurfactant Protein C aa 3-48.
Form	Liquid
Concentration	500 ug/ml
Purification	Protein A affinity purified.

Suggested Dilutions

Western blot, 1:500-2000  
Immunohistochemistry, 1:50-200  
Immunocytochemistry/Immunofluorescence, 1:50-200  
Flow Cytometry (Fixed), 1:50-200

## Anti-Prosurfactant Protein C/SFTPC Antibody (Monoclonal, 34S34) (M02001) Images



Western blot analysis of Prosurfactant Protein C/SFTPC using anti-Prosurfactant Protein C/SFTPC antibody (M02001). Electrophoresis was performed on a 12% SDS-PAGE gel at 80V (Stacking gel) / 120V (Resolving gel) for 2 hours. The sample well of each lane was loaded with 30 ug of sample under reducing conditions. Lane 1: rat lung tissue lysates, Lane 2: mouse lung tissue lysates. After electrophoresis, proteins were transferred to a nitrocellulose membrane at 150 mA for 50-90 minutes. Blocked the membrane with 5% non-fat milk/TBS for 1.5 hour at RT. The membrane was incubated with rabbit anti-Prosurfactant Protein C/SFTPC antigen affinity purified monoclonal antibody (M02001) at 1:500 overnight at 4°C, then washed with TBS-0.1% Tween 3 times with 5 minutes each and probed with a goat anti-rabbit IgG-HRP secondary antibody at a dilution of 1:5000 for 1.5 hour at RT. The signal is developed using an ECL Plus Western Blotting Substrate (Catalog # AR1196-200) with Tanon 5200 system. A specific band was detected for Prosurfactant Protein C/SFTPC at approximately 21 kDa. The expected band size for Prosurfactant Protein C/SFTPC is at 21 kDa.

### Submit a product review to [Biocompare.com](https://www.biocompare.com)

Submit a review of this product to [Biocompare.com](https://www.biocompare.com) to receive a \$20 Amazon.com giftcard! Your reviews help your fellow scientists make the right decisions. Thank you for your contribution.



Anti-Prosurfactant Protein C/SFTPC Antibody (Monoclonal, 34S34)

For Research Use Only. Not for use in diagnostic procedures.