

Anti-IGF2BP2 Mouse Monoclonal Antibody [Clone ID: OTI3F9]

Catalog Number: M02010

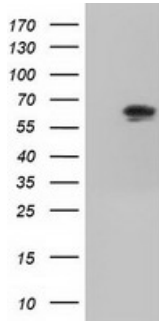
Overview

Product Name	Anti-IGF2BP2 Mouse Monoclonal Antibody [Clone ID: OTI3F9]
Reactive Species	Dog, Human, Monkey, Mouse, Rat
Description	Boster Bio Anti-IGF2BP2 mouse monoclonal antibody, clone OTI3F9 (formerly 3F9). Catalog# M02010. Tested in FC, IF, IHC, WB. This antibody reacts with Human, Monkey, Mouse, Rat, Dog.
Application	Flow Cytometry, IF, IHC, WB
Clonality	Monoclonal OTI3F9
Formulation	PBS (pH 7.3) containing 1% stabilizing protein, 50% glycerol and 0.02% sodium azide. This antibody is supplied in a stabilized formulation. Compatibility with conjugation reactions depends on the chemistry of the conjugation method used. For conjugation methods that are not compatible with the stabilizing components present in this formulation, a carrier-free antibody format is required.
Storage Instructions	Store at -20°C as received.
Host	Mouse
Uniprot ID	Q9Y6M1

Technical Details

Immunogen	Full length human recombinant protein of human IGF2BP2 (NP_006333) produced in HEK293T cell.
Isotype	IgG1
Concentration	0.6 mg/ml
Purification	Purified from mouse ascites fluids or tissue culture supernatant by affinity chromatography (protein A/G)
Suggested Dilutions	WB 1:1000~2000 IHC 1:50 IF 1:100 Flow Cytometry 1:100

Anti-IGF2BP2 Mouse Monoclonal Antibody [Clone ID: OTI3F9] (M02010) Images



HEK293T cells were transfected with the pCMV6-ENTRY control (Left lane) or pCMV6-ENTRY IGF2BP2 (Right lane) cDNA for 48 hrs and lysed. Equivalent amounts of cell lysates (5 ug per lane) were separated by SDS-PAGE and immunoblotted with anti-IGF2BP2.

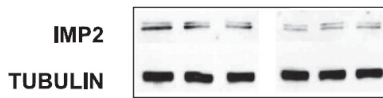
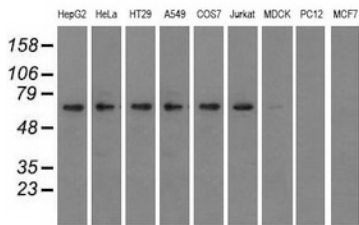
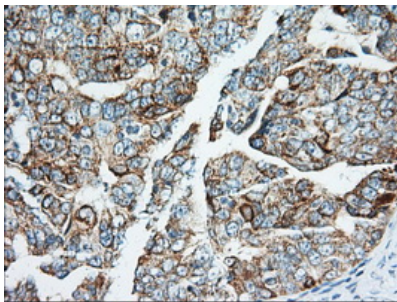


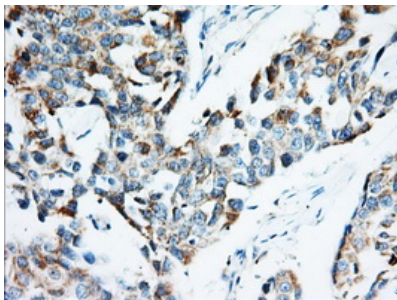
Figure from citation: Western Blot of IGF2BP2 (IMP2) protein level by using anti-IGF2BP2 antibody in rat glomerular MCs.



Western blot analysis of extracts (35ug) from 9 different cell lines by using anti-IGF2BP2 monoclonal antibody.

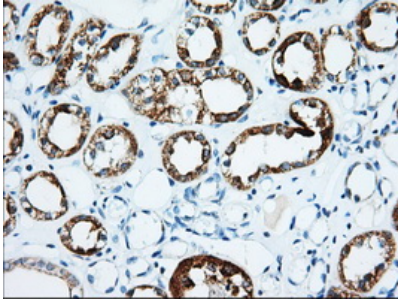
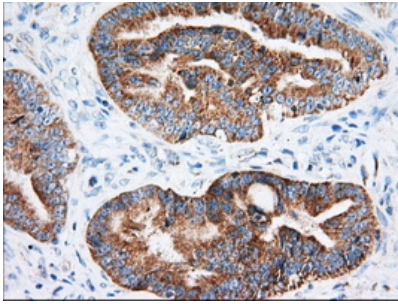


Immunohistochemical staining of paraffin-embedded Adenocarcinoma of Human ovary tissue using anti-IGF2BP2 mouse monoclonal antibody. (Heat-induced epitope retrieval by 10mM citric buffer)

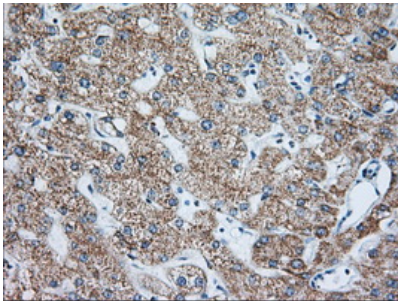


Immunohistochemical staining of paraffin-embedded Adenocarcinoma of Human breast tissue using anti-IGF2BP2 mouse monoclonal antibody. (Heat-induced epitope retrieval by 10mM citric buffer)

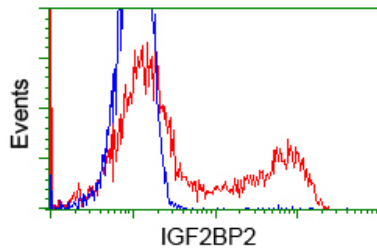
Immunohistochemical staining of paraffin-embedded Adenocarcinoma of Human colon tissue using anti-IGF2BP2 mouse monoclonal antibody. (Heat-induced epitope retrieval by 10mM citric buffer)



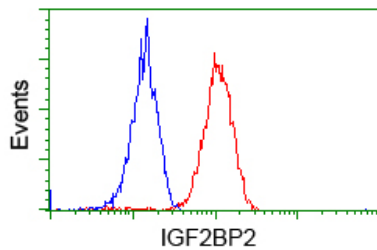
Immunohistochemical staining of paraffin-embedded Human Kidney tissue within the normal limits using anti-IGF2BP2 mouse monoclonal antibody. (Heat-induced epitope retrieval by 10mM citric buffer)



Immunohistochemical staining of paraffin-embedded Human liver tissue within the normal limits using anti-IGF2BP2 mouse monoclonal antibody. (Heat-induced epitope retrieval by 10mM citric buffer)

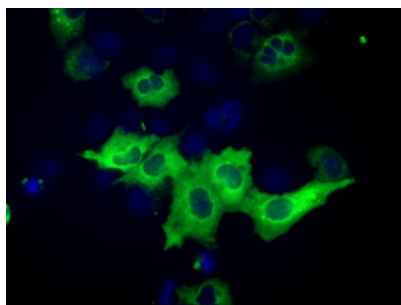
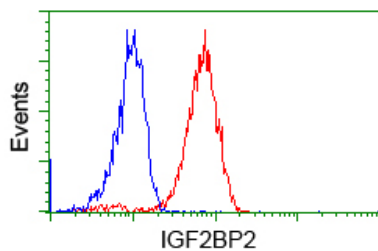


HEK293T cells transfected with either IGF2BP2 (Myc-DDK-tagged) overexpress plasmid (Red) or empty vector control plasmid (Blue) were immunostained by anti-IGF2BP2 antibody (M02010)



Flow cytometric Analysis of HeLa cells

Flow cytometric Analysis of Jurkat cells



Anti-IGF2BP2 mouse monoclonal antibody (M02010) immunofluorescent staining of COS7 cells transiently transfected by pCMV6-ENTRY IGF2BP2.

Submit a product review to Biocompare.com

Submit a review of this product to Biocompare.com to receive a \$20 Amazon.com giftcard! Your reviews help your fellow scientists make the right decisions. Thank you for your contribution.



Anti-IGF2BP2 Mouse Monoclonal Antibody [Clone ID: OTI3F9]

For Research Use Only. Not for use in diagnostic procedures.