

Anti-ARTS1 (ERAP1) Mouse Monoclonal Antibody [Clone ID: OTI6E3]

Catalog Number: M02021

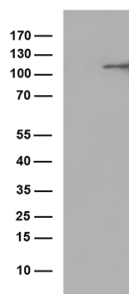
Overview

Product Name	Anti-ARTS1 (ERAP1) Mouse Monoclonal Antibody [Clone ID: OTI6E3]
Reactive Species	Human, Mouse, Rat
Description	Boster Bio ERAP1 mouse monoclonal antibody, clone OTI6E3. Catalog# M02021. Tested in WB. This antibody reacts with Human, Mouse, Rat.
Application	WB
Clonality	Monoclonal OTI6E3
Formulation	PBS (pH 7.3) containing 1% stabilizing protein, 50% glycerol and 0.02% sodium azide. This antibody is supplied in a stabilized formulation. Compatibility with conjugation reactions depends on the chemistry of the conjugation method used. For conjugation methods that are not compatible with the stabilizing components present in this formulation, a carrier-free antibody format is required.
Storage Instructions	Store at -20°C as received.
Host	Mouse
Uniprot ID	Q9NZ08

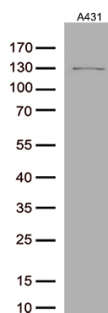
Technical Details

Immunogen	Human recombinant protein fragment corresponding to amino acids 529-941 of human ERAP1 (NP_001035548) produced in E.coli.
Isotype	IgG2b
Concentration	1 mg/ml
Purification	Purified from mouse ascites fluids or tissue culture supernatant by affinity chromatography (protein A/G)
Suggested Dilutions	WB 1:250

Anti-ARTS1 (ERAP1) Mouse Monoclonal Antibody [Clone ID: OTI6E3] (M02021) Images



HEK293T cells were transfected with the pCMV6-ENTRY control (Left lane) or pCMV6-ENTRY ERAP1 (Right lane) cDNA for 48 hrs and lysed. Equivalent amounts of cell lysates (5 ug per lane) were separated by SDS-PAGE and immunoblotted with anti-ERAP1 (1:250).



Western blot analysis of extracts (35ug) from 1 cell lines lysates by using anti-ERAP1 monoclonal antibody (1:250).

Submit a product review to Biocompare.com

Submit a review of this product to Biocompare.com to receive a \$20 Amazon.com giftcard! Your reviews help your fellow scientists make the right decisions. Thank you for your contribution.



Anti-ARTS1 (ERAP1) Mouse Monoclonal Antibody [Clone ID: OTI6E3]

For Research Use Only. Not for use in diagnostic procedures.