

Anti-Tristetraprolin (ZFP36) Mouse Monoclonal Antibody [Clone ID: OTI1A2]

Catalog Number: M02028

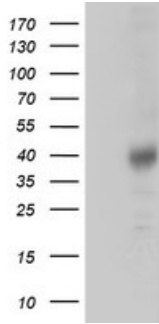
Overview

Product Name	Anti-Tristetraprolin (ZFP36) Mouse Monoclonal Antibody [Clone ID: OTI1A2]
Reactive Species	Human, Mouse, Rat
Description	Boster Bio ZFP36 mouse monoclonal antibody, clone OTI1A2 (formerly 1A2). Catalog# M02028. Tested in FC, IHC, WB. This antibody reacts with Human, Mouse, Rat.
Application	Flow Cytometry, IHC, WB
Clonality	Monoclonal OTI1A2
Formulation	PBS (pH 7.3) containing 1% stabilizing protein, 50% glycerol and 0.02% sodium azide. This antibody is supplied in a stabilized formulation. Compatibility with conjugation reactions depends on the chemistry of the conjugation method used. For conjugation methods that are not compatible with the stabilizing components present in this formulation, a carrier-free antibody format is required.
Storage Instructions	Store at -20°C as received.
Host	Mouse
Uniprot ID	P26651

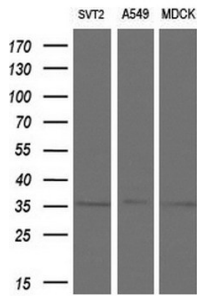
Technical Details

Immunogen	Full length human recombinant protein of human ZFP36 (NP_003398) produced in HEK293T cell.
Isotype	IgG2a
Concentration	1 mg/ml
Purification	Purified from mouse ascites fluids or tissue culture supernatant by affinity chromatography (protein A/G)
Suggested Dilutions	WB 1:2000 IHC 1:150 Flow Cytometry 1:100

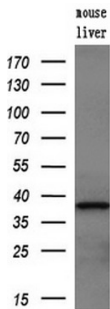
Anti-Tristetraprolin (ZFP36) Mouse Monoclonal Antibody [Clone ID: OTI1A2] (M02028) Images



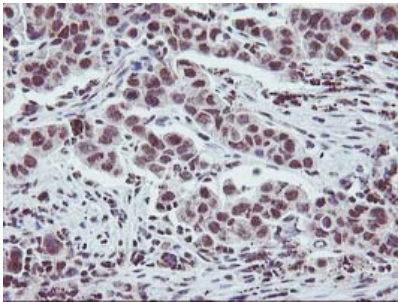
HEK293T cells were transfected with the pCMV6-ENTRY control (Left lane) or pCMV6-ENTRY ZFP36 (Right lane) cDNA for 48 hrs and lysed. Equivalent amounts of cell lysates (5 ug per lane) were separated by SDS-PAGE and immunoblotted with anti-ZFP36.



Western blot analysis of extracts (10ug) from 3 different cell lines by using anti-ZFP36 monoclonal antibody at 1:200 dilution.

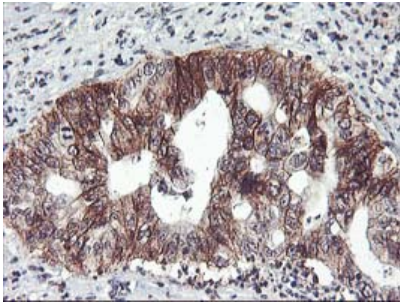


Western blot analysis of extracts (10ug) from a mouse tissue by using anti-ZFP36 monoclonal antibody (1:200).

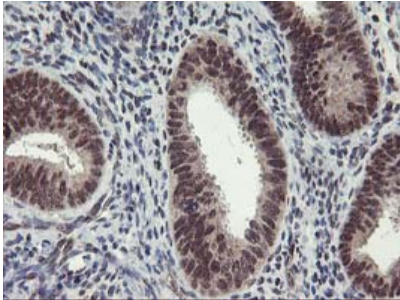


Immunohistochemical staining of paraffin-embedded Carcinoma of Human lung tissue using anti-ZFP36 mouse monoclonal antibody. (Heat-induced epitope retrieval by 10mM citric buffer)

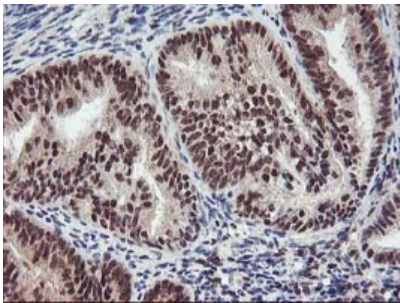
Immunohistochemical staining of paraffin-embedded Carcinoma of Human pancreas tissue using anti-ZFP36 mouse monoclonal antibody. (Heat-induced epitope retrieval by 10mM citric buffer)



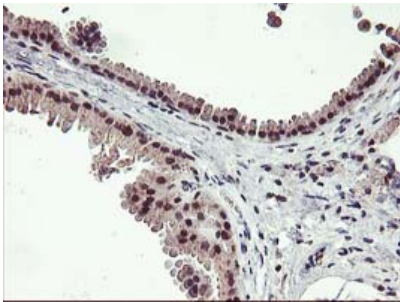
Immunohistochemical staining of paraffin-embedded Human endometrium tissue within the normal limits using anti-ZFP36 mouse monoclonal antibody. (Heat-induced epitope retrieval by 10mM citric buffer)



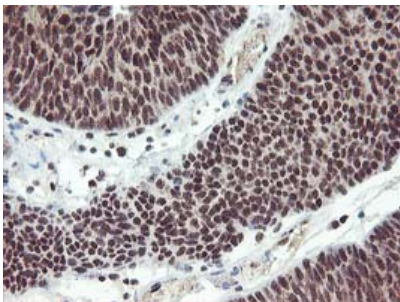
Immunohistochemical staining of paraffin-embedded Adenocarcinoma of Human endometrium tissue using anti-ZFP36 mouse monoclonal antibody. (Heat-induced epitope retrieval by 10mM citric buffer)



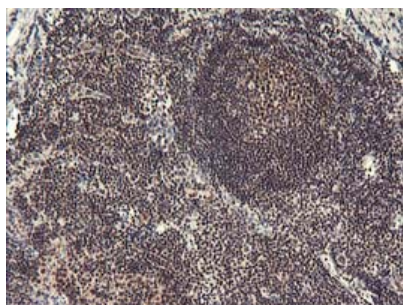
Immunohistochemical staining of paraffin-embedded Human breast tissue within the normal limits using anti-ZFP36 mouse monoclonal antibody. (Heat-induced epitope retrieval by 10mM citric buffer)



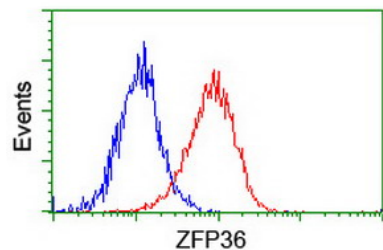
Immunohistochemical staining of paraffin-embedded Carcinoma of Human bladder tissue using anti-ZFP36 mouse monoclonal antibody. (Heat-induced epitope retrieval by 10mM citric buffer)



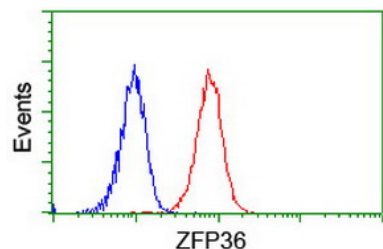
Immunohistochemical staining of paraffin-embedded Human tonsil within the normal limits using anti-ZFP36 mouse monoclonal antibody. (Heat-induced epitope retrieval by 10mM citric buffer)



10mM citric buffer



Flow cytometric Analysis of HeLa cells



Flow cytometric Analysis of Jurkat cells

Submit a product review to Biocompare.com

Submit a review of this product to Biocompare.com to receive a \$20 Amazon.com giftcard! Your reviews help your fellow scientists make the right decisions. Thank you for your contribution.



Anti-Tristetraprolin (ZFP36) Mouse Monoclonal Antibody [Clone ID: OT11A2]

For Research Use Only. Not for use in diagnostic procedures.