

Anti-Tristetraprolin (ZFP36) Mouse Monoclonal Antibody [Clone ID: OTI8B5]

Catalog Number: M02028-1

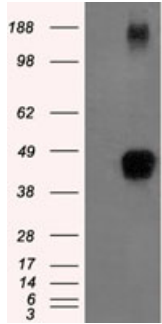
Overview

Product Name	Anti-Tristetraprolin (ZFP36) Mouse Monoclonal Antibody [Clone ID: OTI8B5]
Reactive Species	Human
Description	Boster Bio ZFP36 mouse monoclonal antibody, clone OTI8B5 (formerly 8B5). Catalog# M02028-1. Tested in FC, IF, IHC, WB. This antibody reacts with Human.
Application	Flow Cytometry, IF, IHC, WB
Clonality	Monoclonal OTI8B5
Formulation	PBS (pH 7.3) containing 1% stabilizing protein, 50% glycerol and 0.02% sodium azide. This antibody is supplied in a stabilized formulation. Compatibility with conjugation reactions depends on the chemistry of the conjugation method used. For conjugation methods that are not compatible with the stabilizing components present in this formulation, a carrier-free antibody format is required.
Storage Instructions	Store at -20°C as received.
Host	Mouse
Uniprot ID	P26651

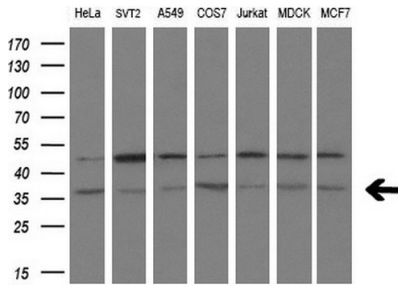
Technical Details

Immunogen	Full length human recombinant protein of human ZFP36 (NP_003398) produced in HEK293T cell.
Isotype	IgG1
Concentration	1 mg/ml
Purification	Purified from mouse ascites fluids or tissue culture supernatant by affinity chromatography (protein A/G)
Suggested Dilutions	WB 1:1000 IHC 1:50 IF 1:100 Flow Cytometry 1:100

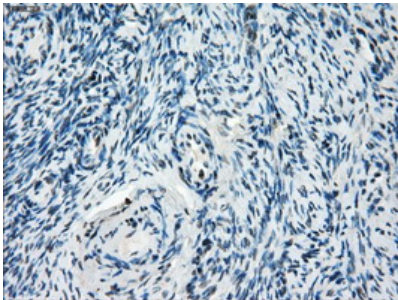
Anti-Tristetraprolin (ZFP36) Mouse Monoclonal Antibody [Clone ID: OTI8B5] (M02028-1) Images



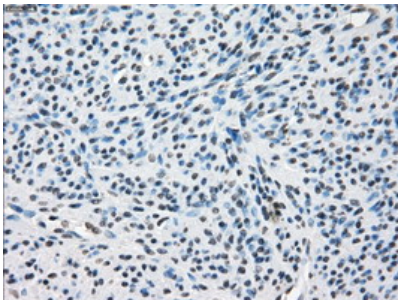
HEK293T cells were transfected with the pCMV6-ENTRY control (Left lane) or pCMV6-ENTRY ZFP36 (Right lane) cDNA for 48 hrs and lysed. Equivalent amounts of cell lysates (5 ug per lane) were separated by SDS-PAGE and immunoblotted with anti-ZFP36.



Western blot analysis of extracts (10ug) from 7 different cell lines by using anti-ZFP36 monoclonal antibody at 1:200 dilution.

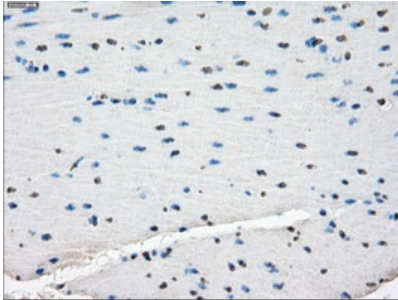
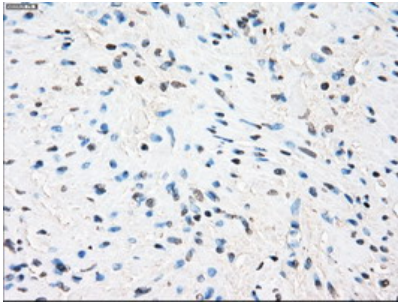


Immunohistochemical staining of paraffin-embedded Human Ovary tissue within the normal limits using anti-ZFP36 mouse monoclonal antibody. (Heat-induced epitope retrieval by 10mM citric buffer)

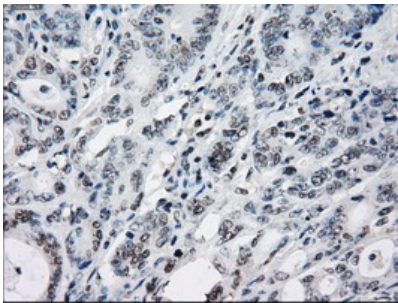


Immunohistochemical staining of paraffin-embedded Human endometrium tissue within the normal limits using anti-ZFP36 mouse monoclonal antibody. (Heat-induced epitope retrieval by 10mM citric buffer)

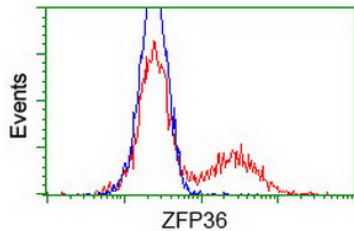
Immunohistochemical staining of paraffin-embedded Human prostate tissue within the normal limits using anti-ZFP36 mouse monoclonal antibody. (Heat-induced epitope retrieval by 10mM citric buffer)



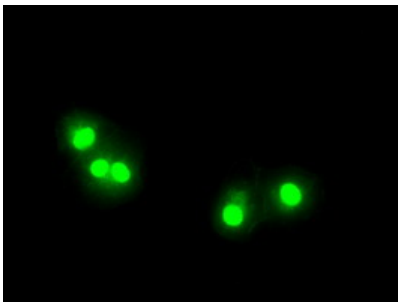
Immunohistochemical staining of paraffin-embedded Human colon tissue within the normal limits using anti-ZFP36 mouse monoclonal antibody. (Heat-induced epitope retrieval by 10mM citric buffer)



Immunohistochemical staining of paraffin-embedded Adenocarcinoma of Human colon tissue using anti-ZFP36 mouse monoclonal antibody. (Heat-induced epitope retrieval by 10mM citric buffer)



HEK293T cells transfected with either ZFP36 (Myc-DDK-tagged) overexpress plasmid (Red) or empty vector control plasmid (Blue) were immunostained by anti-ZFP36 antibody (M02028-1)



Anti-ZFP36 mouse monoclonal antibody (M02028-1) immunofluorescent staining of COS7 cells transiently transfected by pCMV6-ENTRY ZFP36.

Submit a product review to Biocompare.com

Submit a review of this product to Biocompare.com to receive a \$20 Amazon.com giftcard! Your reviews help your fellow scientists make the right decisions. Thank you for your contribution.



Anti-Tristetraprolin (ZFP36) Mouse Monoclonal Antibody [Clone ID: OT18B5]

For Research Use Only. Not for use in diagnostic procedures.