

Anti-CCL17 Antibody

Catalog Number: M02036

About CCL17

Chemotactic factor for T-lymphocytes but not monocytes or granulocytes. May play a role in T-cell development in thymus and in trafficking and activation of mature T-cells. Binds to CCR4.

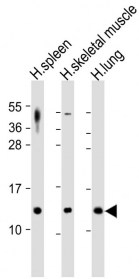
Overview

Product Name	Anti-CCL17 Antibody
Reactive Species	Human
Description	Boster Bio Anti-CCL17 Antibody (Catalog # M02036). Tested in WB, Flow Cytometry application(s). This antibody reacts with Human.
Application	Flow Cytometry, WB
Clonality	Polyclonal
Formulation	Purified polyclonal antibody supplied in PBS with 0.09% (W/V) sodium azide.
Storage Instructions	Maintain refrigerated at 2-8°C for up to 2 weeks. For long-term storage, store at -20°C in small aliquots to prevent freeze-thaw cycles.
Host	Rabbit
Uniprot ID	Q92583

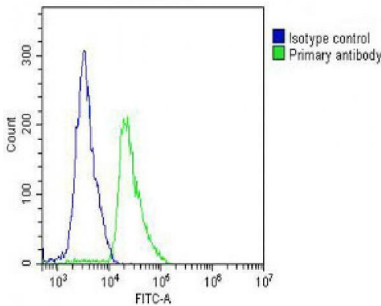
Technical Details

Immunogen	This CCL17 antibody is generated from a rabbit immunized with a recombinant protein of human CCL17.
Predicted Reactive Species	Mouse
Isotype	Rabbit IgG
Purification	This antibody is purified through a protein A column, followed by peptide affinity purification.
Suggested Dilutions	WB: 1:2000 FC: 1:25

Anti-CCL17 Antibody (M02036) Images



All lanes : Anti-CCL17 Antibody at 1:2000 dilution
Lane 1: human spleen lysates
Lane 2: human skeletal muscle lysates
Lane 3: human lung lysates
Lysates/proteins at 20 µg per lane. Secondary Goat Anti-Rabbit IgG, (H+L), Peroxidase conjugated at 1/10000 dilution. Predicted band size : 11 kDa
Blocking/Dilution buffer: 5% NFDN/TBST.



Overlay histogram showing Jurkat cells stained with M02036 (green line). The cells were fixed with 2% paraformaldehyde (10 min) and then permeabilized with 90% methanol for 10 min. The cells were then incubated in 2% bovine serum albumin to block non-specific protein-protein interactions followed by the antibody (M02036, 1:25 dilution) for 60 min at 37°C. The secondary antibody used was Goat-Anti-Rabbit IgG, DyLight® 488 Conjugated Highly Cross-Adsorbed at 1/200 dilution for 40 min at 37°C. Isotype control antibody (blue line) was rabbit IgG (1µg/1x10⁶ cells) used under the same conditions. Acquisition of >10, 000 events was performed.

Submit a product review to [Biocompare.com](https://www.biocompare.com)

Submit a review of this product to [Biocompare.com](https://www.biocompare.com) to receive a \$20 Amazon.com giftcard! Your reviews help your fellow scientists make the right decisions. Thank you for your contribution.



Anti-CCL17 Antibody

For Research Use Only. Not for use in diagnostic procedures.