

Anti-Tollip Antibody (Monoclonal, Kimmy-2)

Catalog Number: M02039

About Tollip

TOLLIP (TOLL-Interacting Protein), is an inhibitory adaptor protein that in humans is encoded by the TOLLIP gene. Lo et al. (2009) stated that the TOLLIP gene maps to chromosome 11. The mouse gene maps to chromosome 7. By Western blot analysis of embryonic kidney cells, Burns et al. (2000) confirmed the binding of TOLLIP to IL1RAP, to a complex of IL1RAP-IL1R1, and to IL18R. Burns et al. (2000) proposed that IL1B stimulation induces aggregation of IL1Rs, recruitment of MYD88 followed by TOLLIP-IRAK complexes, and the phosphorylation of IRAK by MYD88. This leads to the dissociation of TOLLIP from IRAK, which can then transmit the IL1-induced signals.

Overview

Product Name	Anti-Tollip Antibody (Monoclonal, Kimmy-2)
Reactive Species	Mouse
Description	Boster Bio Anti-Tollip Antibody (Monoclonal, Kimmy-2) catalog # M02039. Tested in IP, ICC applications. This antibody reacts with Mouse.
Application	IP, ICC
Clonality	Monoclonal Kimmy-2
Formulation	Each vial contains 0.02% sodium azide.
Storage Instructions	Store at -20°C for one year. Avoid repeated freeze-thaw cycles.
Host	Mouse
Uniprot ID	Q9QZ06

Technical Details

Immunogen	Recombinant mouse Tollip (aa 1-274).
Predicted Reactive Species	Chimpanzee, Hamster
Cross Reactivity	No cross reactivity with other proteins.
Isotype	IgG1 Kappa
Form	Liquid
Concentration	0.5-1mg/ml, actual concentration vary by lot. Use suggested dilution ratio to decide dilution procedure.
Purification	Protein G Purified
Suggested Dilutions	Dilute the sample so that the expected range of concentrations fall within the detection range of this

kit.

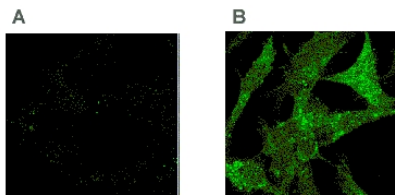
If the expected range of concentration is unknown, a pilot test should be conducted to decide the optimal dilution ratio for your samples.

Some PubMed article(s) citing the expression level of this target are as follows:

Boster Bio's internal QC testing used:

ICC, 1:100, Mouse

Anti-Tollip Antibody (Monoclonal, Kimmy-2) (M02039) Images



Tollip was detected in Tollip -/-(A) or overexpressed Tollip in -/-(B) murine embryonic fibroblasts (MEF) cells using mouse anti-Tollip monoclonal antibody (Catalog # M02039) at 1:100. The immunocytochemical sections were developed using SABC method (Catalog # SA1092).

Submit a product review to Biocompare.com

Submit a review of this product to Biocompare.com to receive a \$20 Amazon.com giftcard! Your reviews help your fellow scientists make the right decisions. Thank you for your contribution.



Anti-Tollip Antibody (Monoclonal, Kimmy-2)