

## Anti-S100 alpha 6 S100A6 Rabbit Monoclonal Antibody

Catalog Number: M02043

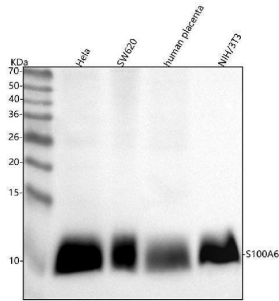
### Overview

|                      |  |
|----------------------|--|
| Product Name         | Anti-S100 alpha 6 S100A6 Rabbit Monoclonal Antibody  |
| Reactive Species     | Human, Mouse, Rat  |
| Description          | Boster Bio Anti-S100 alpha 6 S100A6 Rabbit Monoclonal Antibody catalog # M02043. Tested in WB, IHC, ICC/IF, IP, Flow Cytometry applications. This antibody reacts with Human, Mouse, Rat.  |
| Application          | Flow Cytometry, IP, IF, IHC, ICC, WB   |
| Clonality            | Monoclonal AOBG-19   |
| Formulation          | Rabbit IgG in stabilizing components, phosphate buffered saline, pH 7.4, 150mM NaCl, 0.02% sodium azide and 50% glycerol.<br>*This antibody is supplied in a stabilized formulation.<br>Compatibility with conjugation reactions depends on the chemistry of the conjugation method used. For conjugation methods that are not compatible with the stabilizing components present in this formulation, a carrier-free antibody format is required. |
| Storage Instructions | Store at -20°C for one year. For short term storage and frequent use, store at 4°C for up to one month. Avoid repeated freeze-thaw cycles.   |
| Host                 | Rabbit   |
| Uniprot ID           | P06703   |

### Technical Details

|                     |  |
|---------------------|--|
| Immunogen           | A synthesized peptide derived from human S100 alpha 6                  |
| Isotype             | Rabbit IgG   |
| Form                | Liquid   |
| Concentration       | 0.5mg/ml   |
| Purification        | Affinity-chromatography  |
| Suggested Dilutions | WB 1:500-2000<br>IHC 1:50-200<br>ICC/IF 1:50-200<br>IP 1:20<br>FC 1:20 |

## Anti-S100 alpha 6 S100A6 Rabbit Monoclonal Antibody (M02043) Images



Western blot analysis of S100A6 using anti-S100A6 antibody (M02043). Electrophoresis was performed on a 5-20% SDS-PAGE gel at 70V (Stacking gel) / 90V (Resolving gel) for 2-3 hours. The sample well of each lane was loaded with 30 ug of sample under reducing conditions. Lane 1: human Hela whole cell lysates, Lane 2: human SW620 whole cell lysates, Lane 3: human placenta tissue lysates, Lane 4: mouse NIH/3T3 whole cell lysates. After electrophoresis, proteins were transferred to a nitrocellulose membrane at 150 mA for 50-90 minutes. Blocked the membrane with 5% non-fat milk/TBS for 1.5 hour at RT. The membrane was incubated with rabbit anti-S100A6 antigen affinity purified monoclonal antibody (Catalog # M02043) at 1:500 overnight at 4°C, then washed with TBS-0.1%Tween 3 times with 5 minutes each and probed with a goat anti-rabbit IgG-HRP secondary antibody at a dilution of 1:500 for 1.5 hour at RT. The signal is developed using an Enhanced Chemiluminescent detection (ECL) kit (Catalog # EK1002) with Tanon 5200 system. A specific band was detected for S100A6 at approximately 10 kDa. The expected band size for S100A6 is at 10 kDa.

### Submit a product review to [Biocompare.com](https://www.biocompare.com)

Submit a review of this product to [Biocompare.com](https://www.biocompare.com) to receive a \$20 Amazon.com giftcard! Your reviews help your fellow scientists make the right decisions. Thank you for your contribution.



Anti-S100 alpha 6 S100A6 Rabbit Monoclonal Antibody

For Research Use Only. Not for use in diagnostic procedures.