

## Anti-RPA34 (RPA2) Mouse Monoclonal Antibody [Clone ID: OT11H10]

Catalog Number: M02067-1

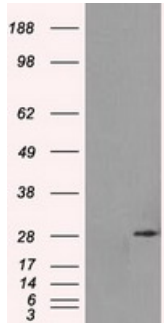
### Overview

Product Name	Anti-RPA34 (RPA2) Mouse Monoclonal Antibody [Clone ID: OT11H10]
Reactive Species	Dog, Human, Monkey, Mouse, Rat
Description	Boster Bio RPA2 mouse monoclonal antibody, clone OT11H10 (formerly 1H10). Catalog# M02067-1. Tested in FC, IF, IHC, IP, WB. This antibody reacts with Human, Monkey, Mouse, Rat, Dog.
Application	Flow Cytometry, IP, IF, IHC, WB
Clonality	Monoclonal OT11H10
Formulation	PBS (pH 7.3) containing 1% stabilizing protein, 50% glycerol and 0.02% sodium azide. This antibody is supplied in a stabilized formulation. Compatibility with conjugation reactions depends on the chemistry of the conjugation method used. For conjugation methods that are not compatible with the stabilizing components present in this formulation, a carrier-free antibody format is required.
Storage Instructions	Store at -20°C as received.
Host	Mouse
Uniprot ID	P15927

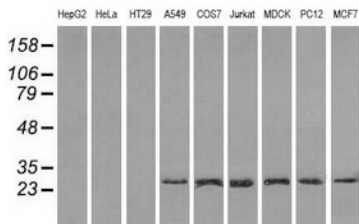
### Technical Details

Immunogen	Full length human recombinant protein of human RPA2 (NP_002937) produced in HEK293T cell.
Isotype	IgG1
Concentration	0.89 mg/ml
Purification	Purified from mouse ascites fluids or tissue culture supernatant by affinity chromatography (protein A/G)
Suggested Dilutions	WB 1:1000~2000 IHC 1:50 IF 1:100 Flow Cytometry 1:100 IP 2ug/500ul

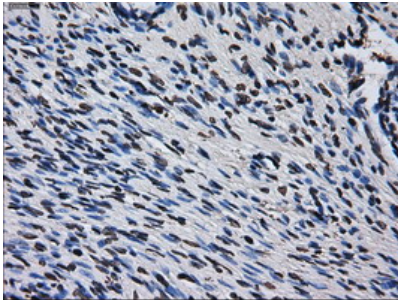
## Anti-RPA34 (RPA2) Mouse Monoclonal Antibody [Clone ID: OTI1H10] (M02067-1) Images



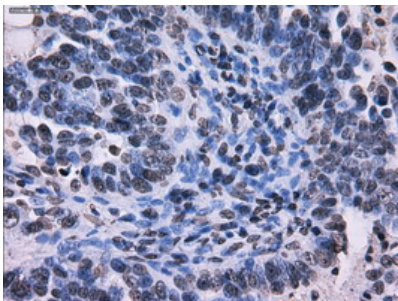
HEK293T cells were transfected with the pCMV6-ENTRY control (Left lane) or pCMV6-ENTRY RPA2 (Right lane) cDNA for 48 hrs and lysed. Equivalent amounts of cell lysates (5 ug per lane) were separated by SDS-PAGE and immunoblotted with anti-RPA2.



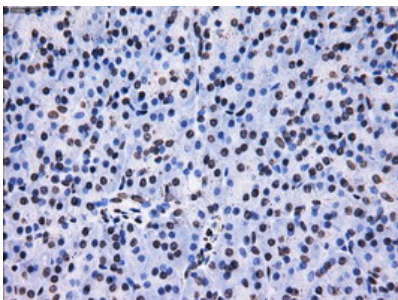
Western blot analysis of extracts (35ug) from 9 different cell lines by using anti-RPA2 monoclonal antibody (HepG2: human; HeLa: human; SVT2: mouse; A549: human; COS7: monkey; Jurkat: human; MDCK: canine; PC12: rat; MCF7: human).



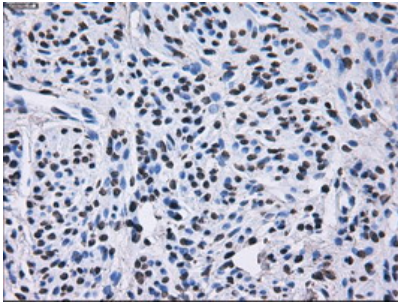
Immunohistochemical staining of paraffin-embedded Human Ovary tissue within the normal limits using anti-RPA2 mouse monoclonal antibody. (Heat-induced epitope retrieval by 10mM citric buffer)



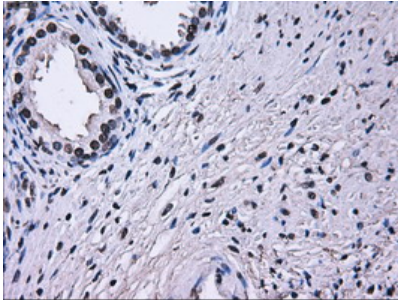
Immunohistochemical staining of paraffin-embedded Adenocarcinoma of Human ovary tissue using anti-RPA2 mouse monoclonal antibody. (Heat-induced epitope retrieval by 10mM citric buffer)



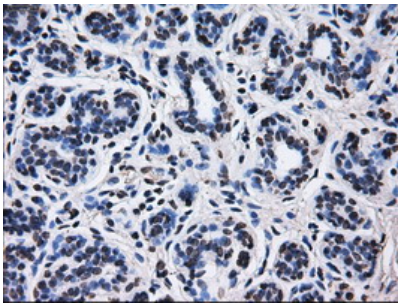
Immunohistochemical staining of paraffin-embedded Human pancreas tissue within the normal limits using anti-RPA2 mouse monoclonal antibody. (Heat-induced epitope retrieval by 10mM citric buffer)



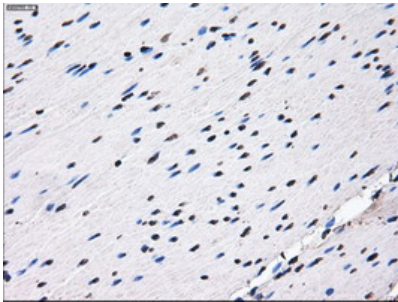
Immunohistochemical staining of paraffin-embedded Human endometrium tissue within the normal limits using anti-RPA2 mouse monoclonal antibody. (Heat-induced epitope retrieval by 10mM citric buffer)



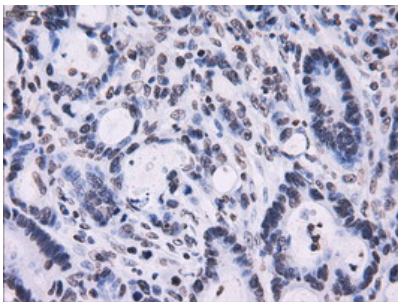
Immunohistochemical staining of paraffin-embedded Human prostate tissue within the normal limits using anti-RPA2 mouse monoclonal antibody. (Heat-induced epitope retrieval by 10mM citric buffer)



Immunohistochemical staining of paraffin-embedded Human breast tissue within the normal limits using anti-RPA2 mouse monoclonal antibody. (Heat-induced epitope retrieval by 10mM citric buffer)

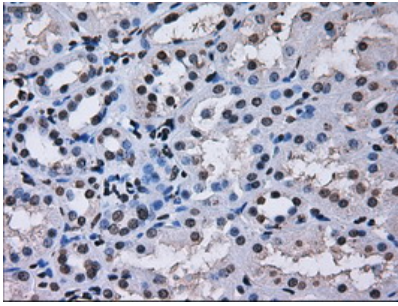


Immunohistochemical staining of paraffin-embedded Human colon tissue within the normal limits using anti-RPA2 mouse monoclonal antibody. (Heat-induced epitope retrieval by 10mM citric buffer)

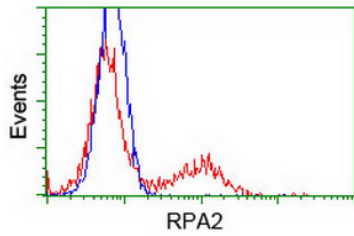


Immunohistochemical staining of paraffin-embedded Adenocarcinoma of Human colon tissue using anti-RPA2 mouse monoclonal antibody. (Heat-induced epitope retrieval by 10mM citric buffer)

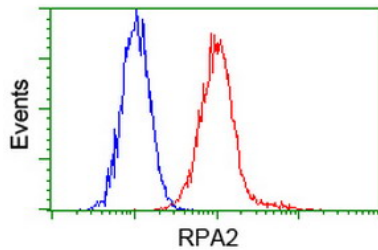
Immunohistochemical staining of paraffin-embedded Human Kidney tissue within the normal limits using anti-RPA2 mouse monoclonal antibody. (Heat-induced epitope retrieval



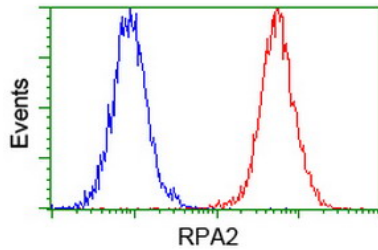
by 10mM citric buffer



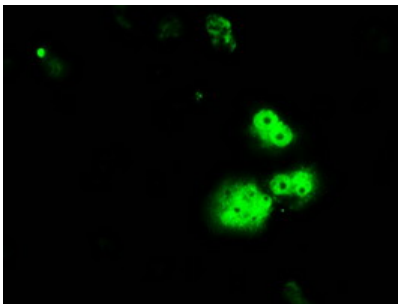
HEK293T cells transfected with either RPA2 (Myc-DDK-tagged) overexpress plasmid (Red) or empty vector control plasmid (Blue) were immunostained by anti-RPA2 antibody (M02067-1)



Flow cytometric Analysis of HeLa cells



Flow cytometric Analysis of Jurkat cells



Anti-RPA2 mouse monoclonal antibody (M02067-1) immunofluorescent staining of COS7 cells transiently transfected by pCMV6-ENTRY RPA2.

**Submit a product review to [Biocompare.com](https://www.biocompare.com)**

Submit a review of this product to [Biocompare.com](https://www.biocompare.com) to receive a \$20 Amazon.com giftcard! Your reviews help your fellow scientists make the right decisions. Thank you for your contribution.



**Anti-RPA34 (RPA2) Mouse Monoclonal Antibody [Clone ID: OT11H10]**

**For Research Use Only. Not for use in diagnostic procedures.**