

Anti-JAM1 Rabbit Monoclonal Antibody, Clone#RM275

Catalog Number: M02068-1

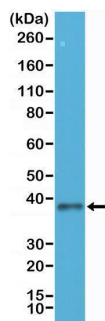
Overview

Product Name	Anti-JAM1 Rabbit Monoclonal Antibody, Clone#RM275
Reactive Species	Human
Description	Boster Bio Anti-JAM1 Rabbit Monoclonal Antibody, Clone#RM275 (Catalog # M02068-1). Tested in IHC, WB applications. This antibody reacts with Human.
Application	IHC, WB
Clonality	Monoclonal RM275
Formulation	50% Glycerol/PBS with 1% stabilizing protein and 0.09% sodium azide This antibody is supplied in a stabilized formulation. Compatibility with conjugation reactions depends on the chemistry of the conjugation method used. For conjugation methods that are not compatible with the stabilizing components present in this formulation, a carrier-free antibody format is required.
Storage Instructions	Store at -20°C for one year. Avoid repeated freeze-thaw cycles.
Host	Rabbit
Uniprot ID	Q9Y624

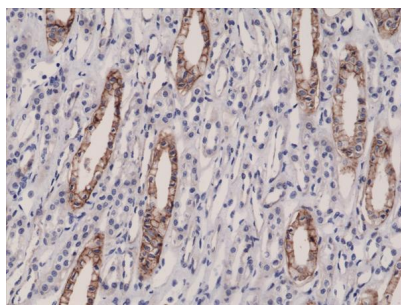
Technical Details

Immunogen	A peptide corresponding to the N-terminus of human human JAM1 (Junctional adhesion molecule 1).
Cross Reactivity	This antibody reacts to human JAM1 (Junctional adhesion molecule 1).
Isotype	Rabbit IgG
Form	Liquid
Concentration	0.5-1mg/ml, actual concentration vary by lot. Use suggested dilution ratio to decide dilution procedure.
Purification	Protein A affinity purified from an animal origin-free culture supernatant
Suggested Dilutions	Immunohistochemistry (IHC): 1:2000-1:10000 dilution WB: 1:250-1:1000 dilution.

Anti-JAM1 Rabbit Monoclonal Antibody, Clone#RM275 (M02068-1) Images



Western Blotting result
Western Blot of HEK293 cells lysates using Anti-JAM1 Rabbit Monoclonal Antibody (Clone RM275) at a 1:250 dilution.



IHC result
Immunohistochemical staining of formalin fixed and paraffin embedded human kidney tissue sections using Anti-JAM1 Rabbit Monoclonal Antibody (Clone RM275) at a 1:10000 dilution.

Submit a product review to Biocompare.com

Submit a review of this product to Biocompare.com to receive a \$20 Amazon.com giftcard! Your reviews help your fellow scientists make the right decisions. Thank you for your contribution.



Anti-JAM1 Rabbit Monoclonal Antibody, Clone#RM275

For Research Use Only. Not for use in diagnostic procedures.