

Anti-SMYD3 Monoclonal Antibody

Catalog Number: M02080

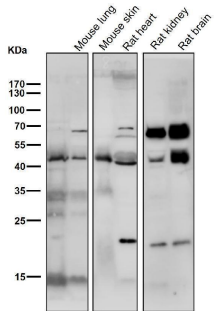
Overview

Product Name	Anti-SMYD3 Monoclonal Antibody
Reactive Species	Human, Mouse, Rat
Description	Boster Bio Anti-SMYD3 Monoclonal Antibody catalog # M02080. Tested in WB, IHC, ICC/IF, IP, Flow Cytometry applications. This antibody reacts with Human, Mouse, Rat.
Application	Flow Cytometry, IP, IF, IHC, ICC, WB
Clonality	Monoclonal ADHE-19
Formulation	Rabbit IgG in stabilizing components, phosphate buffered saline, pH 7.4, 150mM NaCl, 0.02% sodium azide and 50% glycerol. *This antibody is supplied in a stabilized formulation. Compatibility with conjugation reactions depends on the chemistry of the conjugation method used. For conjugation methods that are not compatible with the stabilizing components present in this formulation, a carrier-free antibody format is required.
Storage Instructions	Store at -20°C for one year. For short term storage and frequent use, store at 4°C for up to one month. Avoid repeated freeze-thaw cycles.
Host	Rabbit
Uniprot ID	Q9H7B4

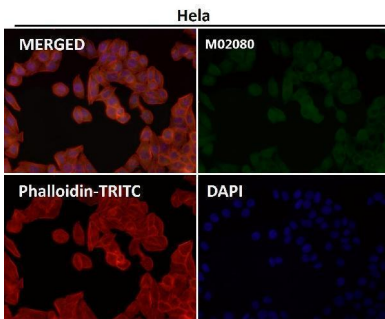
Technical Details

Immunogen	A synthesized peptide derived from human SMYD3 Histone methyltransferase. Specifically methylates 'Lys-4' of histone H3, inducing di- and tri-methylation, but not monomethylation. Plays an important role in transcriptional activation as a member of an RNA polymerase complex. Binds DNA containing 5'-CCCTCC-3' or 5'-GAGGGG-3' sequences.
Isotype	Rabbit IgG
Form	Liquid
Concentration	0.5mg/ml
Purification	Affinity-chromatography
Suggested Dilutions	WB 1:500-2000 IHC 1:50-200 ICC/IF 1:50-200 IP 1:50 FC 1:30

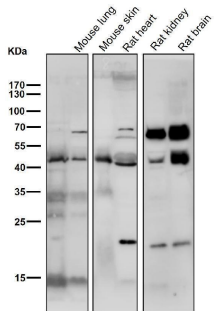
Anti-SMYD3 Monoclonal Antibody (M02080) Images



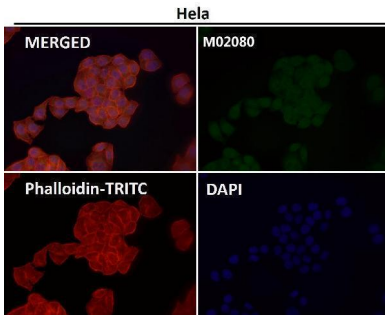
All lanes use the Antibody at 1:3K dilution for 1 hour at room temperature.



Immunofluorescent analysis using the Antibody at 1:50 dilution.

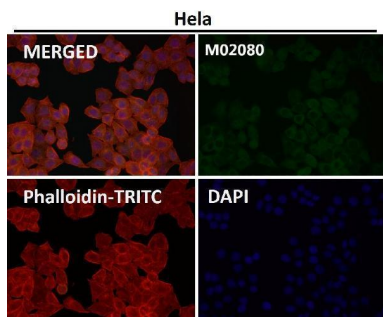
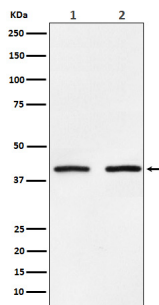


All lanes use the Antibody at 1:3K dilution for 1 hour at room temperature.



Immunofluorescent analysis using the Antibody at 1:50 dilution.

Western blot analysis of SMYD3 expression in (1) HeLa cell lysate; (2) NIH/3T3 cell lysate.



Immunofluorescent analysis using the Antibody at 1:150 dilution.

Submit a product review to Biocompare.com

Submit a review of this product to Biocompare.com to receive a \$20 Amazon.com giftcard! Your reviews help your fellow scientists make the right decisions. Thank you for your contribution.



Anti-SMYD3 Monoclonal Antibody

For Research Use Only. Not for use in diagnostic procedures.