

## Anti-ARPC5 Antibody (Center)

Catalog Number: M02096-1

### About ARPC5

Functions as component of the Arp2/3 complex which is involved in regulation of actin polymerization and together with an activating nucleation-promoting factor (NPF) mediates the formation of branched actin networks.

### Overview

Product Name	Anti-ARPC5 Antibody (Center)
Reactive Species	Human, Mouse, Rat
Description	Boster Bio Anti-ARPC5 Antibody (Center) (Catalog # M02096-1). Tested in WB, IF application(s). This antibody reacts with Human, Mouse, Rat.
Application	IF, WB
Clonality	Polyclonal
Formulation	Purified polyclonal antibody supplied in PBS with 0.09% (W/V) sodium azide.
Storage Instructions	Maintain refrigerated at 2-8°C for up to 2 weeks. For long-term storage, store at -20°C in small aliquots to prevent freeze-thaw cycles.
Host	Rabbit
Uniprot ID	O15511

### Technical Details

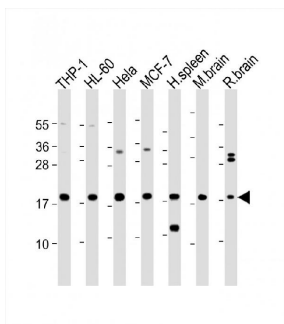
Immunogen	This ARPC5 antibody is generated from a rabbit immunized with a KLH conjugated synthetic peptide between 67-101 amino acids from the Central region of human ARPC5.
Predicted Reactive Species	Bovine
Isotype	Rabbit IgG
Purification	This antibody is purified through a protein A column, followed by peptide affinity purification.
Suggested Dilutions	Dilute the sample so that the expected range of concentrations fall within the detection range of this kit. If the expected range of concentration is unknown, a pilot test should be conducted to decide the optimal dilution ratio for your samples. Some PubMed article(s) citing the expression level of this target are as follows: Boster Bio's internal QC testing used: IF: 1:25 WB: 1:2000



## Anti-ARPC5 Antibody (Center) (M02096-1) Images



Immunofluorescent analysis of 4% paraformaldehyde-fixed, 0.1% Triton X-100 permeabilized U-2 OS (human osteosarcoma cell line) cells labeling ARPC5 with M02096-1 at 1/25 dilution, followed by Dylight® 488-conjugated goat anti-rabbit IgG secondary antibody at 1/200 dilution (green). Immunofluorescence image showing cytoplasm and weak nucleus staining on U-2 OS cell line. Cytoplasmic actin is detected with Dylight® 554 Phalloidin at 1/100 dilution (red). The nuclear counter stain is DAPI (blue).



All lanes : Anti-ARPC5 Antibody (Center) at 1:2000 dilution

Lane 1: THP-1 whole cell lysate

Lane 2: HL-60 whole cell lysate

Lane 3: Hela whole cell lysate

Lane 4: MCF-7 whole cell lysate

Lane 5: Human spleen lysate

Lane 6: Mouse brain lysate

Lane 7: Rat brain lysate

Lysates/proteins at 20 µg per lane.

Secondary

Goat Anti-Rabbit IgG, (H+L), Peroxidase conjugated at 1/10000 dilution.

Predicted band size : 16 kDa

Blocking/Dilution buffer: 5% NFDM/TBST.

## Submit a product review to Biocompare.com

Submit a review of this product to Biocompare.com to receive a \$20 Amazon.com giftcard! Your reviews help your fellow scientists make the right decisions. Thank you for your contribution.



Anti-ARPC5 Antibody (Center)