

Anti-FH Mouse Monoclonal Antibody [Clone ID: OTI1F10]

Catalog Number: M02097-1

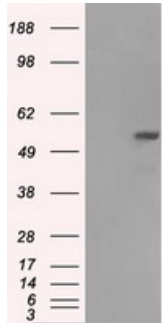
Overview

Product Name	Anti-FH Mouse Monoclonal Antibody [Clone ID: OTI1F10]
Reactive Species	Dog, Human, Mouse, Rat
Description	Boster Bio FH (Fumarate Hydratase) mouse monoclonal antibody, clone OTI1F10 (formerly 1F10). Catalog# M02097-1. Tested in FC, IF, IHC, WB. This antibody reacts with Human, Mouse, Rat, Dog.
Application	Flow Cytometry, IF, IHC, WB
Clonality	Monoclonal OTI1F10
Formulation	PBS (pH 7.3) containing 1% stabilizing protein, 50% glycerol and 0.02% sodium azide. This antibody is supplied in a stabilized formulation. Compatibility with conjugation reactions depends on the chemistry of the conjugation method used. For conjugation methods that are not compatible with the stabilizing components present in this formulation, a carrier-free antibody format is required.
Storage Instructions	Store at -20°C as received.
Host	Mouse
Uniprot ID	P07954

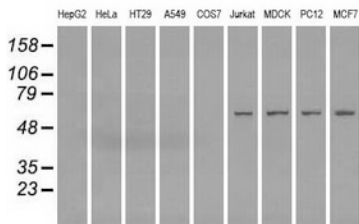
Technical Details

Immunogen	Full length human recombinant protein of human FH (NP_000134) produced in HEK293T cell.
Isotype	IgG1
Concentration	1 mg/ml
Purification	Purified from mouse ascites fluids or tissue culture supernatant by affinity chromatography (protein A/G)
Suggested Dilutions	WB: 1:1000 IHC: 1:50 IF: 1:100 Flow cytometry: 1:100

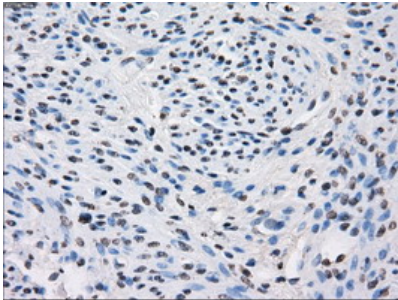
Anti-FH Mouse Monoclonal Antibody [Clone ID: OTI1F10] (M02097-1) Images



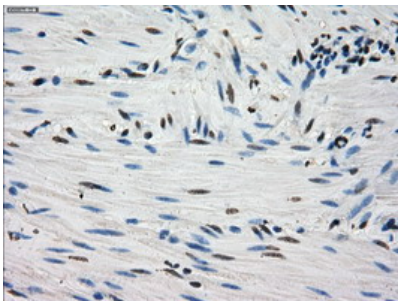
HEK293T cells were transfected with the pCMV6-ENTRY control (Left lane) or pCMV6-ENTRY FH (Right lane) cDNA for 48 hrs and lysed. Equivalent amounts of cell lysates (5 ug per lane) were separated by SDS-PAGE and immunoblotted with anti-FH.



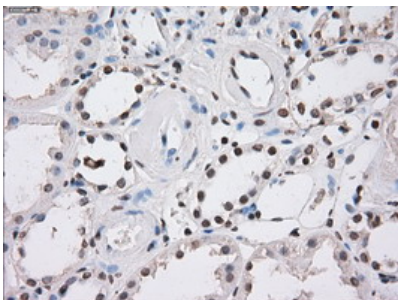
Western blot analysis of extracts (35ug) from 9 different cell lines by using anti-FH monoclonal antibody (HepG2: human; HeLa: human; SVT2: mouse; A549: human; COS7: monkey; Jurkat: human; MDCK: canine; PC12: rat; MCF7: human).



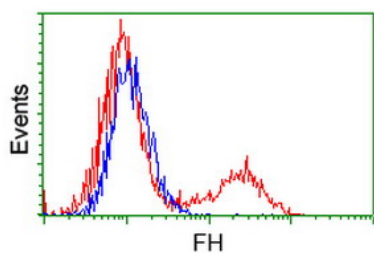
Immunohistochemical staining of paraffin-embedded Human endometrium tissue within the normal limits using anti-FH mouse monoclonal antibody. (Heat-induced epitope retrieval by 10mM citric buffer)



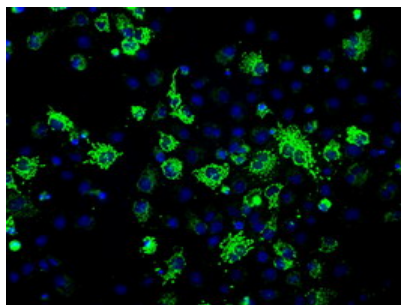
Immunohistochemical staining of paraffin-embedded Human colon tissue within the normal limits using anti-FH mouse monoclonal antibody. (Heat-induced epitope retrieval by 10mM citric buffer)



Immunohistochemical staining of paraffin-embedded Human Kidney tissue within the normal limits using anti-FH mouse monoclonal antibody. (Heat-induced epitope retrieval by 10mM citric buffer)



HEK293T cells transfected with either FH (Myc-DDK-tagged) overexpress plasmid (Red) or empty vector control plasmid (Blue) were immunostained by anti-FH antibody (M02097-1)



Anti-FH mouse monoclonal antibody (M02097-1) immunofluorescent staining of COS7 cells transiently transfected by pCMV6-ENTRY FH.

Submit a product review to Biocompare.com

Submit a review of this product to Biocompare.com to receive a \$20 Amazon.com giftcard! Your reviews help your fellow scientists make the right decisions. Thank you for your contribution.



Anti-FH Mouse Monoclonal Antibody [Clone ID: OTI1F10]

For Research Use Only. Not for use in diagnostic procedures.