

Anti-Crk-L Monoclonal Antibody

Catalog Number: M02100

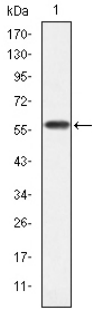
Overview

Product Name	Anti-Crk-L Monoclonal Antibody
Reactive Species	Human
Description	Boster Bio Anti-Crk-L Monoclonal Antibody catalog # M02100. Tested in ELISA, Flow Cytometry, WB applications. This antibody reacts with Human.
Application	ELISA, Flow Cytometry, WB
Clonality	Monoclonal 5E12
Formulation	Ascitic fluid containing 0.03% sodium azide.
Storage Instructions	Store at -20°C for one year. For short term storage and frequent use, store at 4°C for up to one month. Avoid repeated freeze-thaw cycles.
Host	Mouse
Uniprot ID	P46109

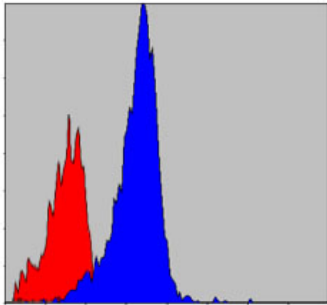
Technical Details

Immunogen	Purified recombinant fragment of human Crk-L expressed in E. Coli.
Isotype	IgG
Form	Liquid
Concentration	1 mg/ml
Purification	Affinity purification
Suggested Dilutions	WB 1:500-1:2000 FC 1:200-1:400 ELISA 1:10000

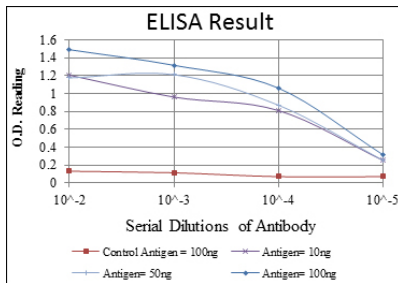
Anti-Crk-L Monoclonal Antibody (M02100) Images



Western blotting validation for Anti-Crk-L Monoclonal Antibody M02100 Western Blot (WB) analysis using Crk-L Monoclonal Antibody against human Crk-L (AA: 100-303) recombinant protein. Electrophoresis was performed on a SDS-PAGE gel. To determine SDS-PAGE gel concentration



Flow Cytometry validation of CRKL using Anti-Crk-L Monoclonal Antibody (M02100). Flow cytometric (FCM) analysis of NIH/3T3 cells using Crk-L Monoclonal Antibody (blue) and negative control (red).



ELISA validation of CRKL using Anti-Crk-L Monoclonal Antibody (M02100). ELISA analysis of Crk-L antibody.

Submit a product review to Biocompare.com

Submit a review of this product to Biocompare.com to receive a \$20 Amazon.com giftcard! Your reviews help your fellow scientists make the right decisions. Thank you for your contribution.



Anti-Crk-L Monoclonal Antibody

For Research Use Only. Not for use in diagnostic procedures.