

Anti-Cytokeratin 19 (KRT19) Mouse Monoclonal Antibody [Clone ID: OTI3F8]

Catalog Number: M02101-6

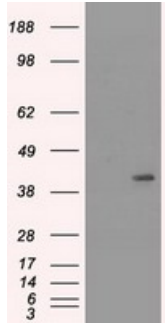
Overview

Product Name	Anti-Cytokeratin 19 (KRT19) Mouse Monoclonal Antibody [Clone ID: OTI3F8]
Reactive Species	Dog, Human, Monkey, Rat
Description	Boster Bio Anti-CK19 (Keratin 19) mouse monoclonal antibody, clone OTI3F8 (formerly 3F8). Catalog# M02101-6. Tested in IF, IHC, WB. This antibody reacts with Human, Monkey, Rat, Dog.
Application	IF, IHC, WB
Clonality	Monoclonal OTI3F8
Formulation	PBS (pH 7.3) containing 1% stabilizing protein, 50% glycerol and 0.02% sodium azide. This antibody is supplied in a stabilized formulation. Compatibility with conjugation reactions depends on the chemistry of the conjugation method used. For conjugation methods that are not compatible with the stabilizing components present in this formulation, a carrier-free antibody format is required.
Storage Instructions	Store at -20°C as received.
Host	Mouse
Uniprot ID	P08727

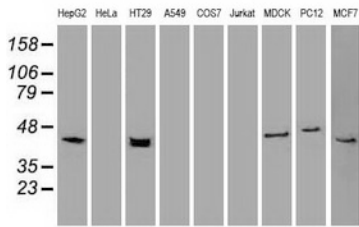
Technical Details

Immunogen	Recombinant fragment expressed in E.coli corresponding to amino acids 240-390 of human CK19
Isotype	IgG1
Concentration	0.15 mg/ml
Purification	Purified from mouse ascites fluids or tissue culture supernatant by affinity chromatography (protein A/G)
Suggested Dilutions	WB: 1:1000 IHC: 1:50~150 IF: 1:100

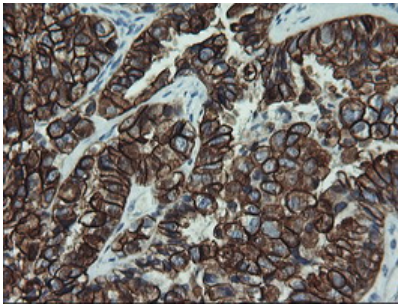
Anti-Cytokeratin 19 (KRT19) Mouse Monoclonal Antibody [Clone ID: OTI3F8] (M02101-6) Images



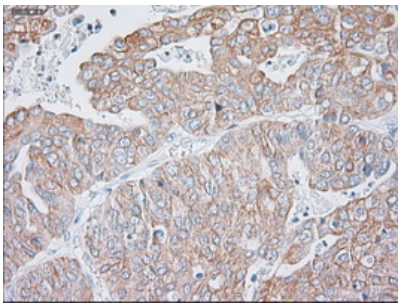
HEK293T cells were transfected with the pCMV6-ENTRY control (Left lane) or pCMV6-ENTRY KRT19 (Right lane) cDNA for 48 hrs and lysed. Equivalent amounts of cell lysates (5 ug per lane) were separated by SDS-PAGE and immunoblotted with anti-KRT19.



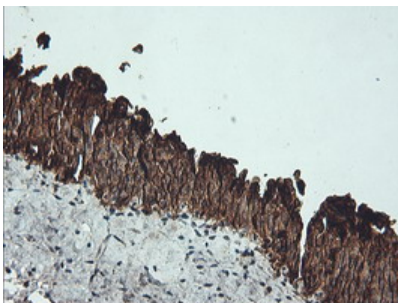
Western blot analysis of extracts (35ug) from 9 different cell lines by using anti-KRT19 monoclonal antibody.



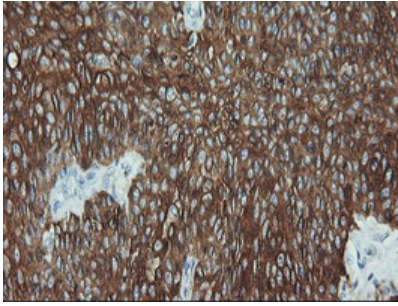
Immunohistochemical staining of paraffin-embedded Adenocarcinoma of Human ovary tissue using anti-KRT19 mouse monoclonal antibody (M02101-6) at 1:150 dilution.



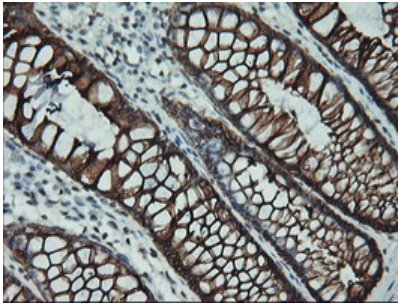
Immunohistochemical staining of paraffin-embedded Adenocarcinoma of endometrium tissue using anti-KRT19 mouse monoclonal antibody (M02101-6) at 1:150 dilution. (Heat-induced epitope retrieval by 10mM citric buffer)



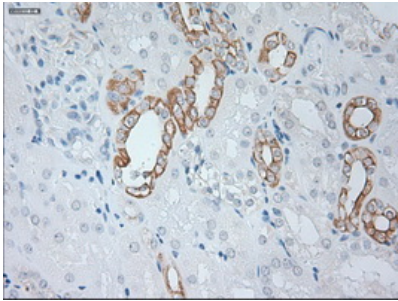
Immunohistochemical staining of paraffin-embedded Human bladder tissue within the normal limits using anti-KRT19 mouse monoclonal antibody (M02101-6) at 1:150 dilution.



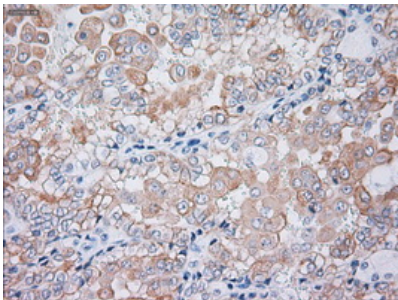
Immunohistochemical staining of paraffin-embedded Carcinoma of Human bladder tissue using anti-KRT19 mouse monoclonal antibody (M02101-6) at 1:150 dilution.



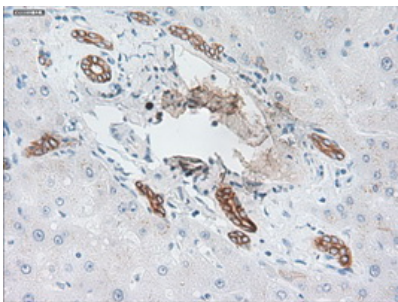
Immunohistochemical staining of paraffin-embedded Human colon tissue within the normal limits using anti-KRT19 mouse monoclonal antibody (M02101-6) at 1:150 dilution.



Immunohistochemical staining of paraffin-embedded Kidney tissue within the normal limits using anti-KRT19 mouse monoclonal antibody. (Heat-induced epitope retrieval by 10mM citric buffer)

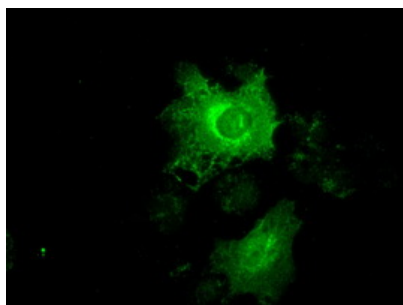


Immunohistochemical staining of paraffin-embedded Carcinoma of kidney tissue using anti-KRT19 mouse monoclonal antibody. (Heat-induced epitope retrieval by 10mM citric buffer)



Immunohistochemical staining of paraffin-embedded liver tissue within the normal limits using anti-KRT19 mouse monoclonal antibody. (Heat-induced epitope retrieval by 10mM citric buffer)

Anti-KRT19 mouse monoclonal antibody (M02101-6)
immunofluorescent staining of COS7 cells transiently



transfected by pCMV6-ENTRY KRT19.

Submit a product review to Biocompare.com

Submit a review of this product to Biocompare.com to receive a \$20 Amazon.com giftcard! Your reviews help your fellow scientists make the right decisions. Thank you for your contribution.



Anti-Cytokeratin 19 (KRT19) Mouse Monoclonal Antibody [Clone ID: OTI3F8]

For Research Use Only. Not for use in diagnostic procedures.