

Anti-MD-2 LY96 Monoclonal Antibody [1A2E3]

Catalog Number: M02107-1

About LY96

MD-2 is a member of the Toll/interleukin-1 receptor (TIR) family, a group of proteins that include the Toll-like receptors (TLRs). TLRs are signaling molecules that recognize different pathogen-associated molecular patterns (PAMPs) and serve as an important link between the innate and adaptive immune responses. TLR4, the major signaling receptor for lipopolysaccharide (LPS), requires the binding of MD-2 to its extracellular region for maximal response to LPS. The specificity of this response is determined by the species of MD-2; e.g., human MD-2 transfected into mouse cells can cause mouse TLR4 to react to LPS analogs that are normally antagonistic to human but not mouse TLR4.

Overview

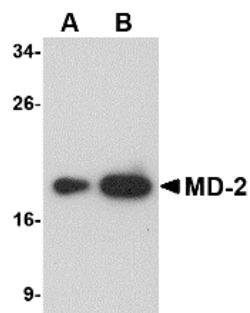
Product Name	Anti-MD-2 LY96 Monoclonal Antibody [1A2E3]
Reactive Species	Human, Mouse, Rat
Description	Boster Bio Anti-MD-2 LY96 Monoclonal Antibody [1A2E3] (Catalog # M02107-1). Tested in ELISA, WB, IHC-P, IF, ICC applications. This antibody reacts with Human, Mouse, Rat.
Application	ELISA, IF, IHC-P, ICC, WB
Clonality	Monoclonal Clone: 1A2E3
Formulation	MD-2 Monoclonal Antibody is supplied in PBS containing 0.02% sodium azide.
Storage Instructions	MD-2 monoclonal antibody can be stored at -20°C, stable for one year.
Host	Mouse
Uniprot ID	Q9Y6Y9

Technical Details

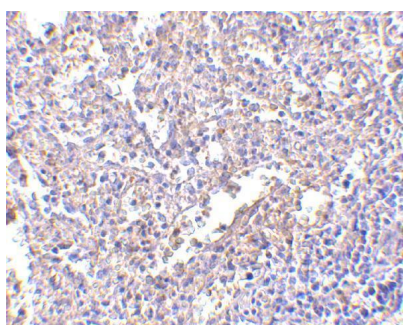
Immunogen	Mouse monoclonal MD-2 antibody was raised against a recombinant protein corresponding to amino acids 2 to 160 of human MD-2.
Predicted Reactive Species	Mouse, Rat
Isotype	IgG1
Form	Liquid
Concentration	1 mg/mL
Purification	MD-2 Monoclonal Antibody is Protein A purified.
Suggested Dilutions	MD-2 antibody can be used for detection of MD-2 by Western blot at 1 ug/mL. Antibody can also be used for immunohistochemistry starting at 2 ug/mL. Antibody validated: Western Blot in recombinant protein; Immunohistochemistry in human

samples; Immunofluorescence in mouse samples. All other applications and species not yet tested.
Optimal dilutions for each application should be determined by the researcher.

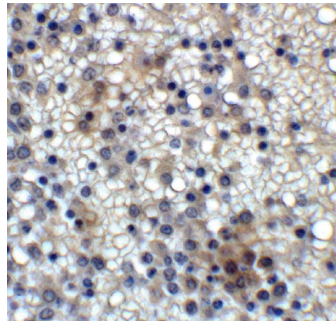
Anti-MD-2 LY96 Monoclonal Antibody [1A2E3] (M02107-1) Images



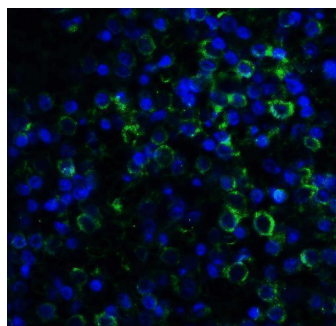
Western blot analysis of (A) 25 and (B) 125 ng of MD-2 recombinant protein with MD-2 antibody at 1 ug/mL.



Immunohistochemistry of MD-2 in human spleen with MD-2 antibody at 2.5 ug/mL.



Immunohistochemistry of MD-2 in human spleen with MD-2 Antibody at 2 ug/ml.



Immunofluorescence of MD-2 in human spleen with MD-2 Antibody at 20 ug/ml.

Submit a product review to [Biocompare.com](https://www.biocompare.com)

Submit a review of this product to [Biocompare.com](https://www.biocompare.com) to receive a \$20 Amazon.com giftcard! Your reviews help your fellow scientists make the right decisions. Thank you for your contribution.



Anti-MD-2 LY96 Monoclonal Antibody [1A2E3]

For Research Use Only. Not for use in diagnostic procedures.