

## Anti-Pumilio 1 Rabbit Monoclonal Antibody

Catalog Number: M02111-1

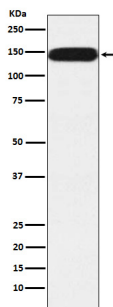
### Overview

|                      |  |
|----------------------|--|
| Product Name         | Anti-Pumilio 1 Rabbit Monoclonal Antibody  |
| Reactive Species     | Human, Mouse, Rat  |
| Description          | Boster Bio Anti-Pumilio 1 Rabbit Monoclonal Antibody catalog # M02111-1. Tested in WB, IHC, ICC/IF, IP, Flow Cytometry applications. This antibody reacts with Human, Mouse, Rat.  |
| Application          | Flow Cytometry, IP, IF, IHC, ICC, WB   |
| Clonality            | Monoclonal 19P55   |
| Formulation          | Rabbit IgG in stabilizing components, phosphate buffered saline, pH 7.4, 150mM NaCl, 0.02% sodium azide and 50% glycerol.<br>*This antibody is supplied in a stabilized formulation.<br>Compatibility with conjugation reactions depends on the chemistry of the conjugation method used. For conjugation methods that are not compatible with the stabilizing components present in this formulation, a carrier-free antibody format is required. |
| Storage Instructions | Store at -20°C for one year. For short term storage and frequent use, store at 4°C for up to one month. Avoid repeated freeze-thaw cycles.   |
| Host                 | Rabbit   |
| Uniprot ID           | Q14671   |

### Technical Details

|                     |  |
|---------------------|--|
| Immunogen           | A synthesized peptide derived from human Pumilio 1                     |
| Isotype             | IgG  |
| Form                | Liquid   |
| Concentration       | 0.5mg/ml   |
| Purification        | Affinity-chromatography  |
| Suggested Dilutions | WB 1:500-2000<br>IHC 1:50-200<br>ICC/IF 1:50-200<br>IP 1:50<br>FC 1:60 |

## Anti-Pumilio 1 Rabbit Monoclonal Antibody (M02111-1) Images



Western blot analysis of Pumilio 1 expression in HeLa cell lysate.

### Submit a product review to Biocompare.com

Submit a review of this product to Biocompare.com to receive a \$20 Amazon.com giftcard! Your reviews help your fellow scientists make the right decisions. Thank you for your contribution.



Anti-Pumilio 1 Rabbit Monoclonal Antibody

For Research Use Only. Not for use in diagnostic procedures.