

Anti-PSD-95 DLG4 Rabbit Monoclonal Antibody, Clone#RM288

Catalog Number: M02128-1

Overview

Product Name	Anti-PSD-95 DLG4 Rabbit Monoclonal Antibody, Clone#RM288
Reactive Species	Human, Mouse
Description	Boster Bio Anti-PSD-95 DLG4 Rabbit Monoclonal Antibody, Clone#RM288 (Catalog # M02128-1). Tested in IHC, WB applications. This antibody reacts with Human, Mouse.
Application	IHC, WB
Clonality	Monoclonal RM288
Formulation	50% Glycerol/PBS with 1% BSA and 0.09% sodium azide
Storage Instructions	Store at -20°C for one year. Avoid repeated freeze-thaw cycles.
Host	Rabbit
Uniprot ID	P78352

Technical Details

Immunogen	A peptide corresponding to the N-terminus of human PSD95
Predicted Reactive Species	Rat
Cross Reactivity	This antibody reacts to human and mouse PSD95. It may also react to rat PSD95, as predicted by immunogen homology
Isotype	Rabbit IgG
Form	Liquid
Concentration	0.5-1mg/ml, actual concentration vary by lot. Use suggested dilution ratio to decide dilution procedure.
Purification	Protein A affinity purified from an animal origin-free culture supernatant
Suggested Dilutions	Immunohistochemistry (IHC): 1:100-1:200 dilution WB: 1:1000-1:8000 dilution.

Anti-PSD-95 DLG4 Rabbit Monoclonal Antibody, Clone#RM288 (M02128-1) Images

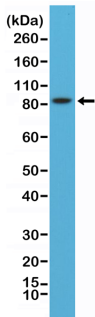


Figure 1. Western Blotting result
Western Blot of mouse brain lysates using anti-PSD-95 rabbit monoclonal antibody (clone RM288) at a 1:8,000 dilution.

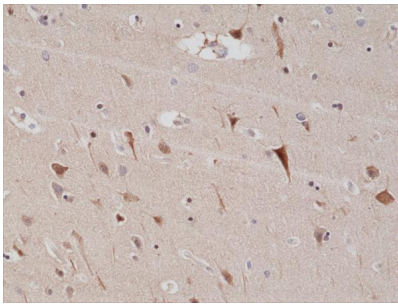


Figure 2. IHC result
Immunohistochemical staining of formalin fixed and paraffin embedded human brain tissue sections using anti-PSD-95 rabbit monoclonal antibody (clone RM288) at a 1:200 dilution.

Submit a product review to Biocompare.com

Submit a review of this product to Biocompare.com to receive a \$20 Amazon.com giftcard! Your reviews help your fellow scientists make the right decisions. Thank you for your contribution.



Anti-PSD-95 DLG4 Rabbit Monoclonal Antibody, Clone#RM288