

Anti-LGR4/Gpr48 Monoclonal Antibody

Catalog Number: M02134

About LGR4

LGR4, also known as leucine-rich repeat-containing G protein-coupled receptor 4, is a G protein-coupled receptors (GPCRs). GPCRs are membrane bound proteins that play key roles in a variety of physiologic functions. Members of the leucine-rich GPCR (LGR) family, such as GPR48, have multiple N-terminal leucine-rich repeats (LRRs) and a 7-transmembrane domain. LGR4 is an orphan GPCR reported to be expressed in steroidogenic tissues such as placenta, ovary, testis, adrenal, pancreas, prostate, and thyroid, as well as in spinal cord, stomach, heart, and kidney.

Overview

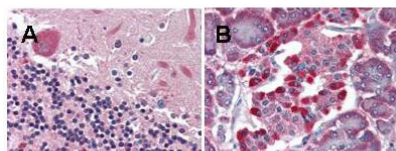
Product Name	Anti-LGR4/Gpr48 Monoclonal Antibody
Reactive Species	Human
Description	Boster Bio Anti-LGR4/Gpr48 Monoclonal Antibody (Catalog # M02134). Tested in ELISA, WB applications. This antibody reacts with Human.
Application	ELISA, IHC, WB
Clonality	Monoclonal Clone: 6G8.B3.G5.C3
Formulation	0.02 M Potassium Phosphate, 0.15 M Sodium Chloride, pH 7.2, 0.01% (w/v) Sodium Azide
Storage Instructions	Store vial at -20°C prior to opening. Aliquot contents and freeze at -20°C or below for extended storage. Avoid cycles of freezing and thawing. Centrifuge product if not completely clear after standing at room temperature. This product is stable for several weeks at 4°C as an undiluted liquid. Dilute only prior to immediate use. Expiration date is one (1) year from date of opening. (Ship on dry ice.)
Host	Mouse
Uniprot ID	Q8N537

Technical Details

Immunogen	This monoclonal antibody was produced by repeated immunizations with a synthetic peptide corresponding to an internal region of human LGR4 protein. The hybridoma was produced by fusing BALB/c mouse splenocytes and mouse myeloma SP2/O cells using conventional technology.
Predicted Reactive Species	Chimpanzee, Macaque
Cross Reactivity	No cross reactivity with other proteins.
Isotype	IgG2b kappa
Form	Liquid (sterile filtered)
Concentration	1.03 mg/mL by UV absorbance at 280 nm

Purification	Anti-LGR4 purified from concentrated tissue culture supernate by Protein A chromatography. This antibody is specific for human LGR4 protein. A BLAST analysis was used to suggest cross-reactivity with LGR4 from chimpanzee, orangutan and macaque based on 100% homology with the immunizing sequence. Cross-reactivity with LGR4 from other sources has not been determined.
Suggested Dilutions	ELISA: 1:20,000 - 1:100,000 IHC: 5 µg/mL WB: 1:500 - 1:3,000 Anti-LGR4 monoclonal antibody has been tested by ELISA and western blot, and is suitable in immunohistochemistry. Expect a band approximately 102 kDa in size corresponding to LGR4 protein by western blotting in the appropriate cell lysate or extract. Specific conditions for reactivity should be optimized by the end user. Use formalin-fixed paraffin-embedded sections for immunohistochemistry. No pre-treatment of sample is required.

Anti-LGR4/Gpr48 Monoclonal Antibody (M02134) Images



Boster's anti-LGR4 monoclonal antibody was used diluted to 5 µg/ml to detect LGR4 staining at the membrane of cells in various human tissues. A. Brain cerebellum. B. Pancreas islet. Strongly positive staining is noted in subsets of cells within the islets of Langerhans. Moderately positive staining was observed in Purkinje and Golgi neurons of the cerebellum, adrenal medulla, neuroendocrine cells, hepatocytes, lung macrophages, seminiferous tubules and Leydig cells of the testis. Faintly to moderately positive staining was also observed in cardiac myocytes and renal tubules, granulocytes, and subsets of lymphocytes. Some elastin background staining is noted. Tissue was formalin fixed and paraffin embedded. No pre-treatment of sample was required. The image shows the localization of antibody as the precipitated red signal, with a hematoxylin purple nuclear counterstain. Personal communication, Andrew Elston, Lifespan Biosciences, Seattle, WA.

Submit a product review to [Biocompare.com](https://www.biocompare.com)

Submit a review of this product to [Biocompare.com](https://www.biocompare.com) to receive a \$20 Amazon.com giftcard! Your reviews help your fellow scientists make the right decisions. Thank you for your contribution.



Anti-LGR4/Gpr48 Monoclonal Antibody

For Research Use Only. Not for use in diagnostic procedures.