

Anti-CD1b (T-Cell Surface Glycoprotein) Monoclonal Antibody

Catalog Number: M02158

About CD1B

The Mouse monoclonal antibody recognizes CD1b, a 44kDa type I glycoprotein associated with beta2-microglobulin. It is expressed on dendritic cells, Langerhans cells, thymocytes, and T acute lymphoblastic leukemia cells. The CD1 multigene family encodes five forms of the CD1 T-cell surface glycoprotein in human, designated CD1A, 1B, 1C, 1D and 1E. CD1, a type 1 membrane protein, has structural similarity to the MHC class I antigen and has been shown to present lipid antigens for recognition by T lymphocytes. Constitutive endocytosis of CD1B molecules and the differential sorting of MHC class II from lysosomes separate peptide- and lipid antigen-presenting molecules during dendritic cell maturation. CD1B is also expressed in interdigitating cells.

Overview

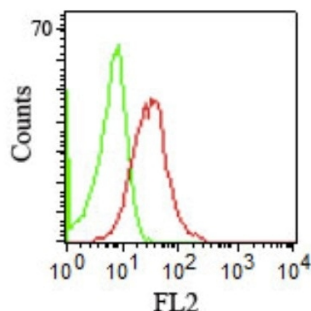
Product Name	Anti-CD1b (T-Cell Surface Glycoprotein) Monoclonal Antibody
Reactive Species	Human
Description	Boster Bio Anti-CD1b (T-Cell Surface Glycoprotein) Monoclonal Antibody (Catalog # M02158). Tested in ELISA, Flow Cytometry, IF applications. This antibody reacts with Human.
Conjugate	Biotin
Application	ELISA, Flow Cytometry, IF
Clonality	Monoclonal Clone: RIV12
Formulation	Prepared in 10mM PBS with 0.05% BSA & 0.05% azide. Also available WITHOUT BSA & azide at 1.0mg/ml.
Storage Instructions	Antibody with azide - store at 2 to 8°C. Antibody without azide - store at -20 to -80°C. Antibody is stable for 24 months. Non-hazardous. No MSDS required.
Host	Mouse
Uniprot ID	P29016

Technical Details

Immunogen	Human peripheral lymphocytes
Predicted Reactive Species	Pig, Rabbit
Cross Reactivity	Does not cross-react with primate, avian or amphibian GR.
Isotype	IgG1, kappa
Form	Liquid

Concentration	Purified antibody with BSA and azide at 200ug/ml
Purification	200ug/ml of antibody purified from Bioreactor Concentrate by Protein A/G.
Suggested Dilutions	<p>Dilute the sample so that the expected range of concentrations fall within the detection range of this kit.</p> <p>If the expected range of concentration is unknown, a pilot test should be conducted to decide the optimal dilution ratio for your samples.</p> <p>Some PubMed article(s) citing the expression level of this target are as follows:</p> <p>Boster Bio's internal QC testing used:</p> <p>ELISA (For coating, order antibody without BSA)</p> <p>Flow Cytometry (1-2ug/million cells)</p> <p>Immunofluorescence (1-2ug/ml)</p> <p>Optimal dilution for a specific application should be determined.</p>

Anti-CD1b (T-Cell Surface Glycoprotein) Monoclonal Antibody (M02158) Images



Flow Cytometric staining of human PBMCs using Anti-CD1b Mouse Monoclonal Antibody (RIV12).

Submit a product review to Biocompare.com

Submit a review of this product to Biocompare.com to receive a \$20 Amazon.com giftcard! Your reviews help your fellow scientists make the right decisions. Thank you for your contribution.



Anti-CD1b (T-Cell Surface Glycoprotein) Monoclonal Antibody