

Anti-Hu CD1b Purified Monoclonal Antibody

Catalog Number: M02158-1

About CD1B

CD1b (also known as R1) together with CD1a and c, belongs to group 1 of CD1 antigens. These non-classical MHC-like glycoproteins serve as antigen-presenting molecules for a subset of T cells that responds to specific lipids and glycolipids found in the cell walls of bacterial pathogens or self-glycolipid antigens such as gangliosides, and they have also roles in antiviral immunity. The trafficking routes of the particular CD1 types differ and correspond to their ability to bind and present different groups of antigens. Besides non-peptide glycolipid antigen presentation to CD1-restricted T cells, CD1b has been implicated in thymocyte development.

Overview

Product Name	Anti-Hu CD1b Purified Monoclonal Antibody
Reactive Species	Human
Description	Boster Bio Anti-Hu CD1b Purified Monoclonal Antibody (Catalog# M02158-1). Tested in Flow Cytometry, IP, IHC-P, IHC-F application(s). This antibody reacts with Human.
Application	Flow Cytometry, IP, IHC-P, IHC-F
Clonality	Monoclonal SN13
Formulation	Phosphate buffered saline (PBS), pH 7.4, 15 mM sodium azide
Storage Instructions	Store at 2-8°C. Do not freeze.
Host	Mouse
Uniprot ID	P29016

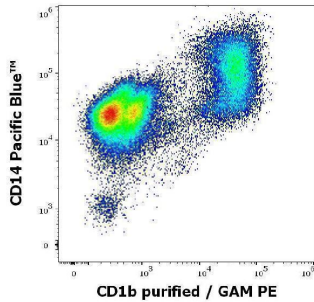
Technical Details

Immunogen	A cell membrane antigen preparation that was isolated from normal human thymocytes. The mouse monoclonal antibody SN13 (also known as K5-1B8) recognizes an extracellular epitope of CD1b, a 44 kDa type I glycoprotein associated with beta2-microglobulin. It is expressed on dendritic cells, Langerhans cells, thymocytes, and T acute lymphoblastic leukemia cells.
Predicted Reactive Species	Primate
Cross Reactivity	This antibody does not cross-react with Thy-1.1 alloantigen.
Isotype	Mouse IgG1 kappa
Form	Liquid
Concentration	1 mg/ml
Purification	Purified by protein-A affinity chromatography.

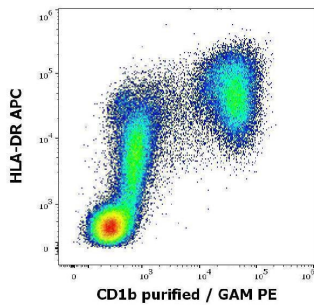
Suggested Dilutions

Flow cytometry: 1-4 ug/ml.

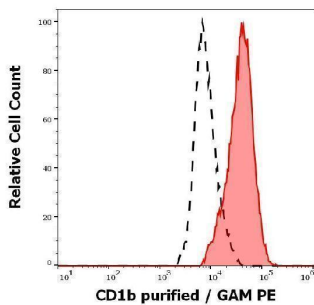
Anti-Hu CD1b Purified Monoclonal Antibody (M02158-1) Images



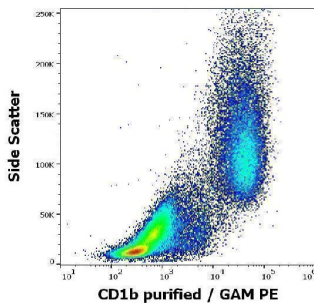
Flow cytometry multicolor surface staining pattern of human stimulated (GM-CSF + IL-4) peripheral blood mononuclear cells using anti-human CD1b (SN13) purified antibody (concentration in sample 9 µg/ml, GAM PE) and anti-human CD14 (MEM-15) Pacific Blue™ antibody (4 µl reagent per million cells in 100 µl of cell suspension).



Flow cytometry multicolor surface staining pattern of human stimulated (GM-CSF + IL-4) peripheral blood mononuclear cells using anti-human CD1b (SN13) purified antibody (concentration in sample 9 µg/ml, GAM PE) and anti-human HLA-DR (L243) APC antibody (10 µl reagent per million cells in 100 µl of cell suspension).



Separation of cells stained using anti-human CD1b (SN13) purified antibody (concentration in sample 9 µg/ml, GAM PE, red-filled) from cells unstained by primary antibody (GAM PE, black-dashed) in flow cytometry analysis (surface staining) of human stimulated (GM-CSF + IL-4) peripheral blood mononuclear cells.



Flow cytometry surface staining pattern of human stimulated (GM-CSF + IL-4) peripheral blood mononuclear cells stained using anti-human CD1b (SN13) purified antibody (concentration in sample 9 µg/ml, GAM PE).

Submit a product review to [Biocompare.com](https://www.biocompare.com)

Submit a review of this product to [Biocompare.com](https://www.biocompare.com) to receive a \$20 Amazon.com giftcard! Your reviews help your fellow scientists make the right decisions. Thank you for your contribution.



Anti-Hu CD1b Purified Monoclonal Antibody

For Research Use Only. Not for use in diagnostic procedures.