

## Anti-CUG BP1 (CELF1) Mouse Monoclonal Antibody [Clone ID: OTI5B8]

Catalog Number: M02163

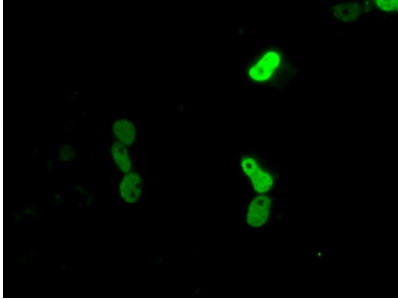
### Overview

Product Name	Anti-CUG BP1 (CELF1) Mouse Monoclonal Antibody [Clone ID: OTI5B8]
Reactive Species	Human
Description	Boster Bio Anti-CUGBP1 mouse monoclonal antibody, clone OTI5B8 (formerly 5B8). Catalog# M02163. Tested in IF, IHC, WB. This antibody reacts with Human.
Conjugate	Unconjugated
Application	IF, IHC, WB
Clonality	Monoclonal OTI5B8
Formulation	PBS (pH 7.3) containing 1% stabilizing protein, 50% glycerol and 0.02% sodium azide. This antibody is supplied in a stabilized formulation. Compatibility with conjugation reactions depends on the chemistry of the conjugation method used. For conjugation methods that are not compatible with the stabilizing components present in this formulation, a carrier-free antibody format is required.
Storage Instructions	Store at -20°C for one year. For short term storage and frequent use, store at 4°C for up to one month. Avoid repeated freeze-thaw cycles.
Host	Mouse
Uniprot ID	Q92879

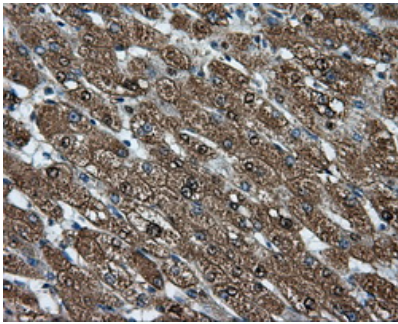
### Technical Details

Immunogen	Full length human recombinant protein of human CUGBP1 (NP_006551) produced in HEK293T cell.
Isotype	IgG2b
Concentration	0.99 mg/ml
Purification	Purified from mouse ascites fluids or tissue culture supernatant by affinity chromatography (protein A/G)
Suggested Dilutions	WB: 1:2000 IHC: 1:50 IF: 1:100

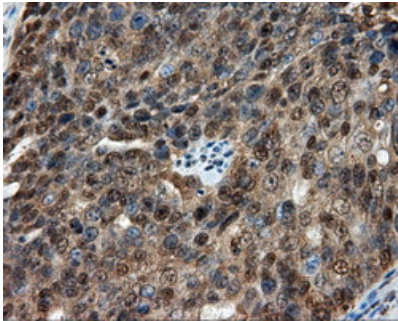
## Anti-CUG BP1 (CELF1) Mouse Monoclonal Antibody [Clone ID: OTI5B8] (M02163) Images



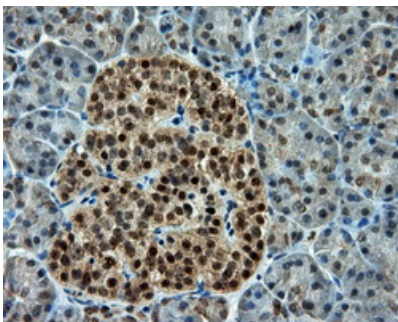
Anti-CUGBP1 mouse monoclonal antibody (M02163) immunofluorescent staining of COS7 cells transiently transfected by pCMV6-ENTRY CUGBP1.



Immunohistochemical staining of paraffin-embedded liver tissue within the normal limits using anti-CUGBP1 mouse monoclonal antibody. (Heat-induced epitope retrieval by 10mM citric buffer)

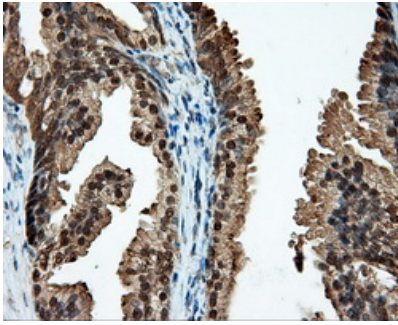


Immunohistochemical staining of paraffin-embedded Adenocarcinoma of ovary tissue using anti-CUGBP1 mouse monoclonal antibody. (Heat-induced epitope retrieval by 10mM citric buffer)

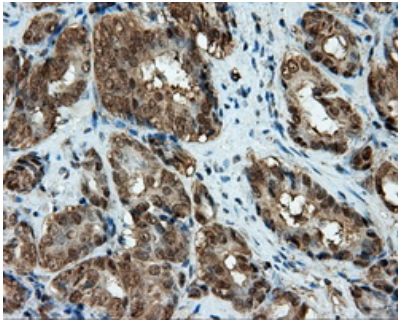


Immunohistochemical staining of paraffin-embedded pancreas tissue within the normal limits using anti-CUGBP1 mouse monoclonal antibody. (Heat-induced epitope retrieval by 10mM citric buffer)

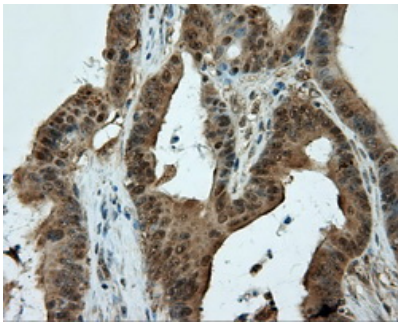
Immunohistochemical staining of paraffin-embedded prostate tissue within the normal limits using anti-CUGBP1 mouse monoclonal antibody. (Heat-induced epitope retrieval by 10mM citric buffer)



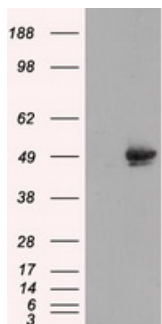
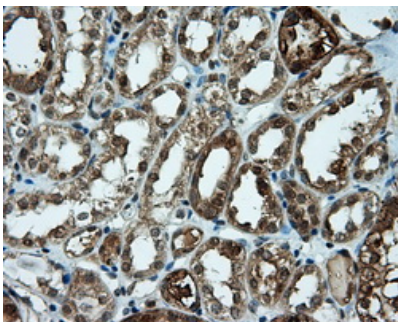
Immunohistochemical staining of paraffin-embedded Carcinoma of prostate tissue using anti-CUGBP1 mouse monoclonal antibody. (Heat-induced epitope retrieval by 10mM citric buffer)



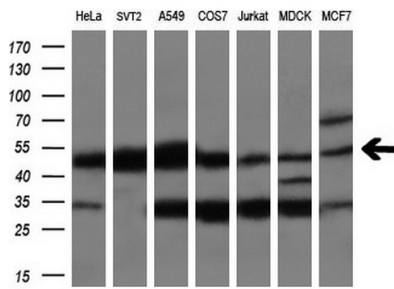
Immunohistochemical staining of paraffin-embedded Adenocarcinoma of colon tissue using anti-CUGBP1 mouse monoclonal antibody. (Heat-induced epitope retrieval by 10mM citric buffer)



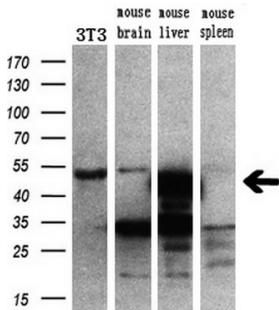
Immunohistochemical staining of paraffin-embedded Kidney tissue within the normal limits using anti-CUGBP1 mouse monoclonal antibody. (Heat-induced epitope retrieval by 10mM citric buffer)



HEK293T cells were transfected with the pCMV6-ENTRY control (Left lane) or pCMV6-ENTRY CUGBP1 (Right lane) cDNA for 48 hrs and lysed. Equivalent amounts of cell lysates (5 ug per lane) were separated by SDS-PAGE and immunoblotted with anti-CUGBP1.



Western blot analysis of extracts (10ug) from 7 different cell lines by using anti-CUGBP1 monoclonal antibody (1:200).



Western blot analysis of extracts (10ug) from a mouse cell line and 3 different mouse tissues by using anti-CUGBP1 monoclonal antibody (1:200).

**Submit a product review to [Biocompare.com](https://www.biocompare.com)**

Submit a review of this product to [Biocompare.com](https://www.biocompare.com) to receive a \$20 Amazon.com giftcard! Your reviews help your fellow scientists make the right decisions. Thank you for your contribution.



Anti-CUG BP1 (CELF1) Mouse Monoclonal Antibody [Clone ID: OT15B8]

For Research Use Only. Not for use in diagnostic procedures.