

Anti-CDC37 Rabbit Monoclonal Antibody

Catalog Number: M02169-2

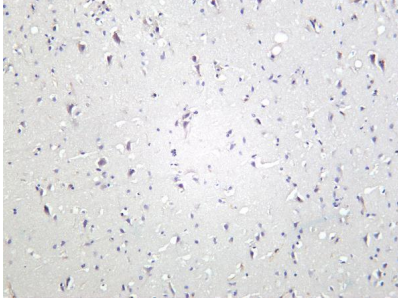
Overview

Product Name	Anti-CDC37 Rabbit Monoclonal Antibody
Reactive Species	Human, Mouse, Rat
Description	The antibody detects endogenous levels of CDC37 protein only when phosphorylated at Ser13. The antibody does not cross-react with CDC37 phosphorylated at other sites. Validated for research with WB,IHC,IF,IP,ELISA applications. Anti CDC37 is reactive for Human, Mouse, Rat samples
Application	ELISA, IP, IF, IHC, WB
Clonality	Monoclonal
Formulation	PBS, 50% glycerol, 0.05% Proclin 300, 0.05% stabilizing protein This antibody is supplied in a stabilized formulation. Compatibility with conjugation reactions depends on the chemistry of the conjugation method used. For conjugation methods that are not compatible with the stabilizing components present in this formulation, a carrier-free antibody format is required.
Storage Instructions	Store at -20°C/1 year
Host	Rabbit
Uniprot ID	Q16543

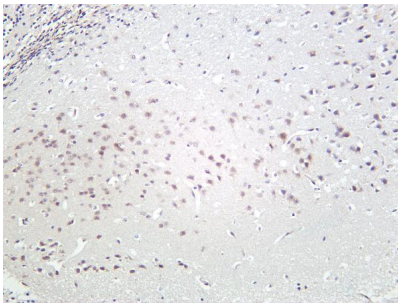
Technical Details

Isotype	IgG, Kappa
Purification	Protein A
Suggested Dilutions	IHC 1:400-1:1000 WB 1:1000-1:5000 IF 1:200-1:1000 ELISA 1:5000-1:20000 IP 1:50-1:200

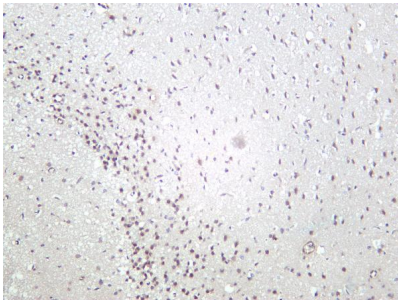
Anti-CDC37 Rabbit Monoclonal Antibody (M02169-2) Images



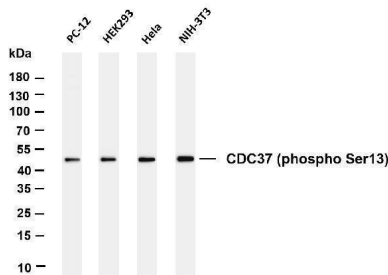
Human brain was stained with Anti-CDC37 (phospho Ser13) rabbit antibody



Mouse brain was stained with Anti-CDC37 (phospho Ser13) rabbit antibody



Rat brain was stained with Anti-CDC37 (phospho Ser13) rabbit antibody



Various whole cell lysates were separated by 4-20% SDS-PAGE, and the membrane was blotted with anti-CDC37 (phospho Ser13) antibody. The HRP-conjugated Goat anti-Rabbit IgG(H + L) antibody was used to detect the antibody. Lane 1: PC-12 Lane 2: HEK293 Lane 3: HeLa Lane 4: NIH-3T3
Predicted band size: 44kDa Observed band size: 44kDa

Submit a product review to [Biocompare.com](https://www.biocompare.com)

Submit a review of this product to [Biocompare.com](https://www.biocompare.com) to receive a \$20 Amazon.com giftcard! Your reviews help your fellow scientists make the right decisions. Thank you for your contribution.



Anti-CDC37 Rabbit Monoclonal Antibody

For Research Use Only. Not for use in diagnostic procedures.