

## Anti-Glycophorin A (CD235a) GYPA Monoclonal Antibody

Catalog Number: M02184-1

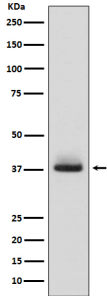
### Overview

Product Name	Anti-Glycophorin A (CD235a) GYPA Monoclonal Antibody
Reactive Species	Human
Description	Boster Bio Anti-Glycophorin A (CD235a) GYPA Monoclonal Antibody catalog # M02184-1. Tested in WB, IHC, Flow Cytometry applications. This antibody reacts with Human.
Application	Flow Cytometry, IHC, WB
Clonality	Monoclonal ADOG-7
Formulation	Rabbit IgG in phosphate buffered saline, pH 7.4, 150mM NaCl, 0.02% sodium azide and 50% glycerol, 0.4-0.5mg/ml BSA.
Storage Instructions	Store at -20°C for one year. For short term storage and frequent use, store at 4°C for up to one month. Avoid repeated freeze-thaw cycles.
Host	Rabbit
Uniprot ID	P02724

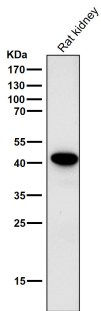
### Technical Details

Immunogen	A synthesized peptide derived from human Glycophorin A (CD235a).
Isotype	Rabbit IgG
Form	Liquid
Concentration	Actual concentration vary by lot. Use suggested dilution ratio to decide dilution procedure.
Purification	Affinity-chromatography
Suggested Dilutions	WB 1:500-1:1000 IHC 1:100-1:500 FC 1:50

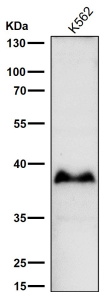
## Anti-Glycophorin A (CD235a) GYPA Monoclonal Antibody (M02184-1) Images



Western blot analysis of Glycophorin A (CD235a) expression in human fetal liver lysate.



All lanes use the Antibody at 1:1K dilution for 1 hour at room temperature.



All lanes use the Antibody at 1:1K dilution for 1 hour at room temperature.

### Submit a product review to [Biocompare.com](https://www.biocompare.com)

Submit a review of this product to [Biocompare.com](https://www.biocompare.com) to receive a \$20 Amazon.com giftcard! Your reviews help your fellow scientists make the right decisions. Thank you for your contribution.



Anti-Glycophorin A (CD235a) GYPA Monoclonal Antibody