

Anti-Hu CD235a Purified GYPA Monoclonal Antibody

Catalog Number: M02184-2

About GYPA

CD235a (Glycophorin A, GPA) is a transmembrane sialoglycoprotein expressed on erythrocytes and their precursors. Similarly to glycophorin B (GPB), these molecules provide the cells with a large mucin-like surface, which minimalizes aggregation between erythrocytes in the circulation. GPA is the carrier of blood group M and N specificities, while GPB accounts for S, s and U specificities. CD235a is a receptor of Hsa, an Streptococcus adhesin.

Overview

Product Name	Anti-Hu CD235a Purified GYPA Monoclonal Antibody
Reactive Species	Human, Rat
Description	Boster Bio Anti-Hu CD235a Purified GYPA Monoclonal Antibody (Catalog# M02184-2). Tested in Flow Cytometry, IHC-P, IHC-F application(s). This antibody reacts with Rat, Human.
Application	Flow Cytometry, IHC-P, IHC-F
Clonality	Monoclonal JC159
Formulation	Phosphate buffered saline (PBS), pH 7.4, 15 mM sodium azide
Storage Instructions	Store at 2-8°C. Do not freeze.
Host	Mouse
Uniprot ID	P02724

Technical Details

Immunogen	Membrane preparation from splenic hairy cell leukemia. The mouse monoclonal antibody JC159 recognizes an epitope between amino acids 27 and 40 of the extracellular portion of CD235a (glycophorin A), a sialoglycoprotein expressed on early erythroblasts, late erythroblasts, erythroblasts, mature erythrocytes and the cells of erythroid cell lines K562 and HEL. The antibody does not react with glycophorin B.
Predicted Reactive Species	Primate
Cross Reactivity	This antibody does not cross-react with Thy-1.1 alloantigen.
Isotype	Mouse IgG1
Form	Liquid
Concentration	1 mg/ml
Purification	Purified by protein-A affinity chromatography.

Suggested Dilutions

Dilute the sample so that the expected range of concentrations fall within the detection range of this kit.

If the expected range of concentration is unknown, a pilot test should be conducted to decide the optimal dilution ratio for your samples.

Some PubMed article(s) citing the expression level of this target are as follows:

Boster Bio's internal QC testing used:

Immunohistochemistry (paraffin sections): 10 ug/ml.

Flow cytometry: 1-4 µg/ml

Anti-Hu CD235a Purified GYPA Monoclonal Antibody (M02184-2) Images

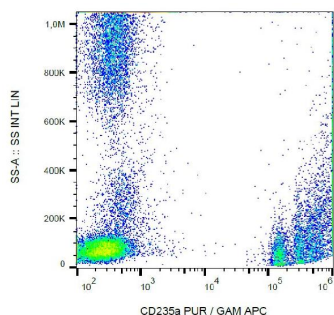


Figure 1. Flow Cytometry validation of GYPA using Anti-Hu CD235a Purified GYPA Monoclonal Antibody (M02184-2).

Flow cytometry analysis (surface staining) of CD235a in human peripheral blood (erythrocytes and leukocytes) with anti-CD235a (JC159) purified

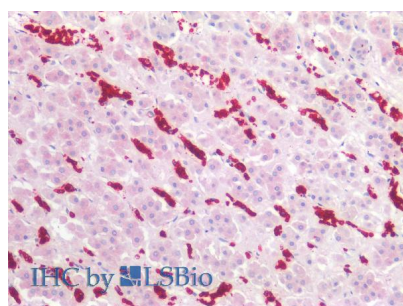


Figure 2. Immunohistochemistry validation of GYPA using Anti-Hu CD235a Purified GYPA Monoclonal Antibody (M02184-2).

Immunohistochemistry staining of human adrenal (paraffin-embedded sections) with anti-CD235a (JC159)

Submit a product review to Biocompare.com

Submit a review of this product to Biocompare.com to receive a \$20 Amazon.com giftcard! Your reviews help your fellow scientists make the right decisions. Thank you for your contribution.



Anti-Hu CD235a Purified GYPA Monoclonal Antibody