

## Anti-Nesprin 1 Rabbit Monoclonal Antibody

Catalog Number: M02192

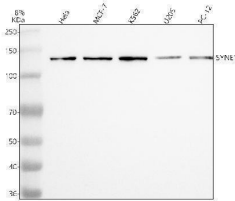
### Overview

Product Name	Anti-Nesprin 1 Rabbit Monoclonal Antibody
Reactive Species	Human, Mouse, Rat
Description	Boster Bio Anti-Nesprin 1 Rabbit Monoclonal Antibody catalog # M02192. Tested in WB, IHC, ICC/IF, Flow Cytometry applications. This antibody reacts with Human, Mouse, Rat.
Application	Flow Cytometry, IF, IHC, ICC, WB
Clonality	Monoclonal AEFE-19
Formulation	Rabbit IgG in stabilizing components, phosphate buffered saline, pH 7.4, 150mM NaCl, 0.02% sodium azide and 50% glycerol. *This antibody is supplied in a stabilized formulation. Compatibility with conjugation reactions depends on the chemistry of the conjugation method used. For conjugation methods that are not compatible with the stabilizing components present in this formulation, a carrier-free antibody format is required.
Storage Instructions	Store at -20°C for one year. For short term storage and frequent use, store at 4°C for up to one month. Avoid repeated freeze-thaw cycles.
Host	Rabbit
Uniprot ID	Q8NF91

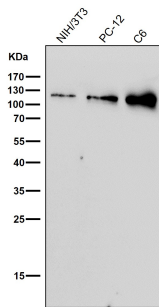
### Technical Details

Immunogen	A synthesized peptide derived from human Nesprin 1
Isotype	Rabbit IgG
Form	Liquid
Concentration	0.5mg/ml
Purification	Affinity-chromatography
Suggested Dilutions	WB 1:500-2000 IHC 1:50-200 ICC/IF 1:50-200 FC 1:50

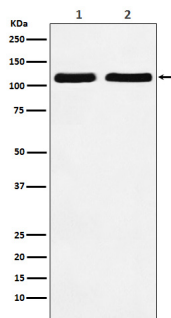
## Anti-Nesprin 1 Rabbit Monoclonal Antibody (M02192) Images



Western blot analysis of SYNE1 using anti-SYNE1 antibody (M02192). Electrophoresis was performed on a 8% SDS-PAGE gel at 80V (Stacking gel) / 120V (Resolving gel) for 2 hours. The sample well of each lane was loaded with 30 ug of sample under reducing conditions. Lane 1: human HeLa whole cell lysates, Lane 2: human MCF-7 whole cell lysates, Lane 3: human K562 whole cell lysates, Lane 4: human U20S whole cell lysates, Lane 5: human PC12 whole cell lysates. After electrophoresis, proteins were transferred to a nitrocellulose membrane at 150 mA for 50-90 minutes. Blocked the membrane with 5% non-fat milk/TBS for 1.5 hour at RT. The membrane was incubated with rabbit anti-SYNE1 antigen affinity purified monoclonal antibody (M02192) at 1:500 overnight at 4°C, then washed with TBS-0.1%Tween 3 times with 5 minutes each and probed with a goat anti-rabbit IgG-HRP secondary antibody at a dilution of 1:5000 for 1.5 hour at RT. The signal is developed using an ECL Plus Western Blotting Substrate (Catalog # AR1196-200) with Tanon 5200 system. A specific band was detected for SYNE1 at approximately 131 kDa. The expected band size for SYNE1 is at 1011 kDa.

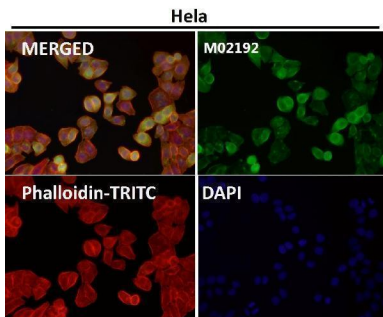
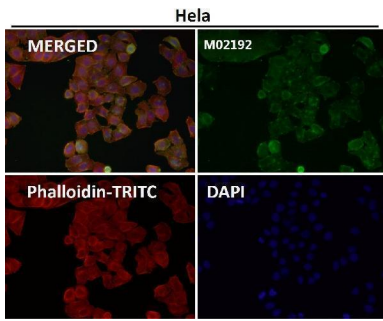


All lanes use the Antibody at 1:3K dilution for 1 hour at room temperature.

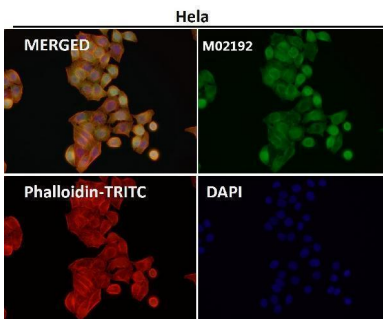


Western blot analysis of Nesprin 1 expression in (1) HeLa cell lysate; (2) RAW264.7 cell lysate.

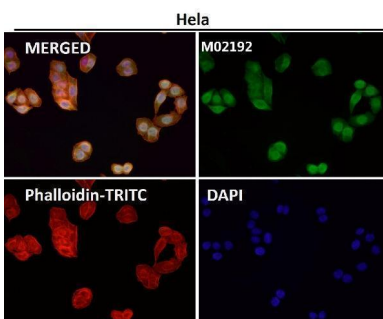
Immunofluorescent analysis using the Antibody at 1:50 dilution.



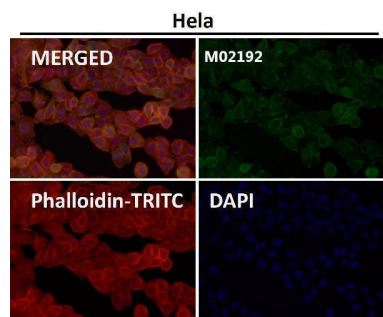
Immunofluorescent analysis using the Antibody at 1:50 dilution.



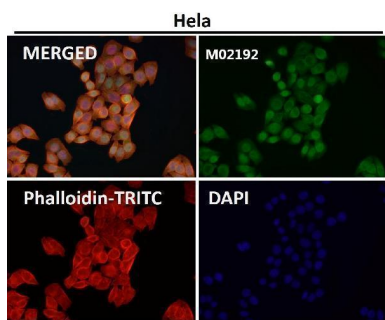
Immunofluorescent analysis using the Antibody at 1:150 dilution.



Immunofluorescent analysis using the Antibody at 1:150 dilution.



Immunofluorescent analysis using the Antibody at 1:150 dilution.



Immunofluorescent analysis using the Antibody at 1:500 dilution.

## Submit a product review to [Biocompare.com](https://www.biocompare.com)

Submit a review of this product to [Biocompare.com](https://www.biocompare.com) to receive a \$20 Amazon.com giftcard! Your reviews help your fellow scientists make the right decisions. Thank you for your contribution.



Anti-Nesprin 1 Rabbit Monoclonal Antibody

For Research Use Only. Not for use in diagnostic procedures.