

Anti-CSF2Rb / CD131 Reference Antibody (CSL311)

Catalog Number: M02219-2

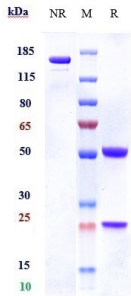
Overview

Product Name	Anti-CSF2Rb / CD131 Reference Antibody (CSL311)
Reactive Species	Human
Description	Boster Bio Anti-CSF2Rb / CD131 Reference Antibody (CSL311) (Catalog # M02219-2). Tested in Flow Cytometry, ELISA, FTA. This antibody reacts with Human. Endotoxin: < 0.684EU/ug,determined by LAL method. Expression system: CHO Cell
Application	ELISA, Flow Cytometry, Functional Assay, Kinetics
Clonality	Monoclonal
Formulation	Purified monoclonal antibody supplied in PBS, pH6.0, without preservative.This antibody is purified through a protein A column.
Storage Instructions	Maintain refrigerated at 2-8°C for up to 2 weeks. For long-term storage, aliquot and store at -20°C to avoid repeated freeze-thaw cycles.
Uniprot ID	P32927

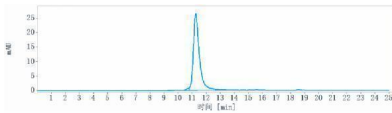
Technical Details

Isotype	IgG4
Form	Liquid

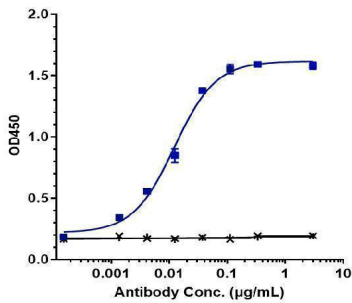
Anti-CSF2Rb / CD131 Reference Antibody (CSL311) (M02219-2) Images



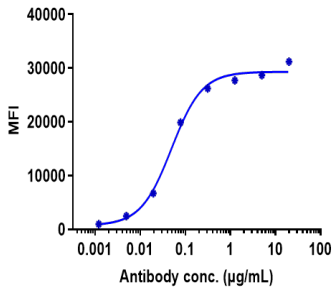
Anti-CSF2Rb/CD131 Reference Antibody (CSL311) on SDS-PAGE under reducing (R) condition. The gel was stained with Coomassie Blue. The purity of the protein is greater than 95%



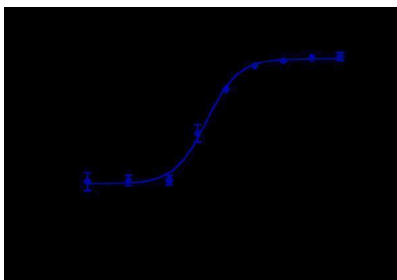
The purity of Anti-CSF2Rb/CD131 Reference Antibody (CSL311) is more than 98.34%



Immobilized human CSF2RB His at 2 µg/mL can bind Anti-CSF2Rb/CD131 Reference Antibody (CSL311)

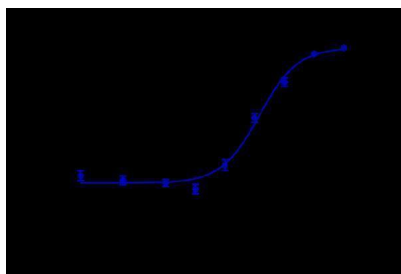


Human CSF2RB HEK293 cells were stained with Anti-CSF2Rb/CD131 Reference Antibody (CSL311) and negative control protein respectively



IL-3-mediated proliferation of TF-1 can be completely blocked by antibodies with an IC₅₀ of 0.2109 nM.

GM-CSF-mediated proliferation of TF-1 can be completely blocked by antibodies with an IC₅₀ of 4.105 nM.



Submit a product review to Biocompare.com

Submit a review of this product to Biocompare.com to receive a \$20 Amazon.com giftcard! Your reviews help your fellow scientists make the right decisions. Thank you for your contribution.



Anti-CSF2Rb / CD131 Reference Antibody (CSL311)

For Research Use Only. Not for use in diagnostic procedures.