

Anti-VMAT2 (SLC18A2) Mouse Monoclonal Antibody [Clone ID: OTI9E11]

Catalog Number: M02232

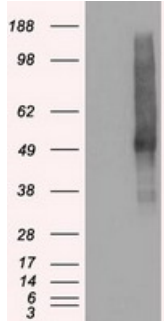
Overview

Product Name	Anti-VMAT2 (SLC18A2) Mouse Monoclonal Antibody [Clone ID: OTI9E11]
Reactive Species	Human, Mouse, Rat
Description	Boster Bio Anti-SLC18A2 (VMAT2) mouse monoclonal antibody, clone OTI9E11 (formerly 9E11). Catalog# M02232. Tested in FC, IF, IHC, WB. This antibody reacts with Human, Mouse, Rat.
Application	Flow Cytometry, IF, IHC, WB
Clonality	Monoclonal OTI9E11
Formulation	PBS (pH 7.3) containing 1% stabilizing protein, 50% glycerol and 0.02% sodium azide. This antibody is supplied in a stabilized formulation. Compatibility with conjugation reactions depends on the chemistry of the conjugation method used. For conjugation methods that are not compatible with the stabilizing components present in this formulation, a carrier-free antibody format is required.
Storage Instructions	Store at -20°C as received.
Host	Mouse
Uniprot ID	Q05940

Technical Details

Immunogen	Full-length protein expressed in 293T cell transfected with human SLC18A2 expression vector .
Isotype	IgG1
Concentration	1 mg/ml
Purification	Purified from mouse ascites fluids or tissue culture supernatant by affinity chromatography (protein A/G)
Suggested Dilutions	WB 1:2000 IHC 1:50 IF 1:100 Flow Cytometry 1:100

Anti-VMAT2 (SLC18A2) Mouse Monoclonal Antibody [Clone ID: OTI9E11] (M02232) Images



HEK293T cells were transfected with the pCMV6-ENTRY control (Left lane) or pCMV6-ENTRY SLC18A2 (Right lane) cDNA for 48 hrs and lysed. Equivalent amounts of cell lysates (5 ug per lane) were separated by SDS-PAGE and immunoblotted with anti-SLC18A2.

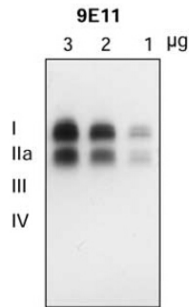
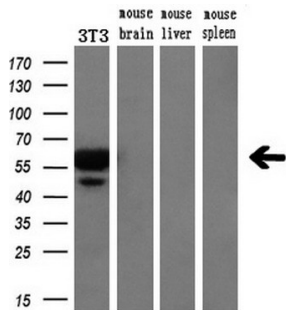
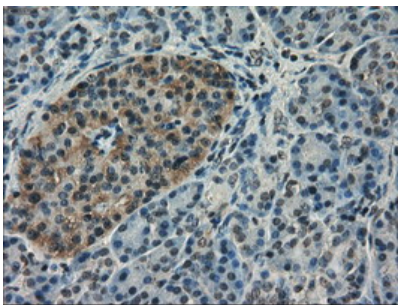


Figure from citation: Western Blot of SLC18A2 protein level by using anti-SLC18A2 (9E11) antibody in the striatum of autopsied human brain.

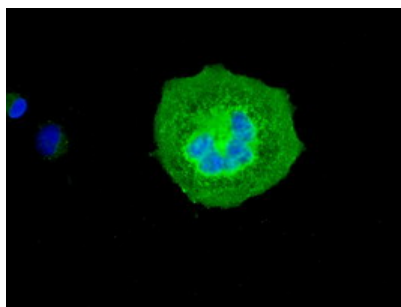
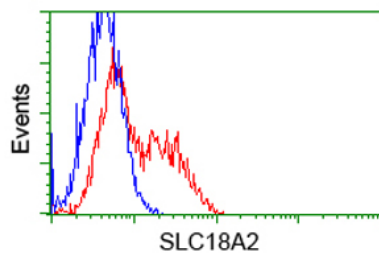


Western blot analysis of extracts (10ug) from a mouse cell line and 3 different mouse tissues by using anti-SLC18A2 monoclonal antibody (1:200).



Immunohistochemical staining of paraffin-embedded Human pancreas tissue within the normal limits using anti-SLC18A2 mouse monoclonal antibody. (Heat-induced epitope retrieval by 10mM citric buffer)

HEK293T cells transfected with either SLC18A2 (Myc-DDK-tagged) overexpress plasmid (Red) or empty vector control plasmid (Blue) were immunostained by anti-SLC18A2 antibody (M02232)



Anti-SLC18A2 mouse monoclonal antibody (M02232) immunofluorescent staining of COS7 cells transiently transfected by pCMV6-ENTRY SLC18A2.

Submit a product review to Biocompare.com

Submit a review of this product to Biocompare.com to receive a \$20 Amazon.com giftcard! Your reviews help your fellow scientists make the right decisions. Thank you for your contribution.



Anti-VMAT2 (SLC18A2) Mouse Monoclonal Antibody [Clone ID: OTI9E11]

For Research Use Only. Not for use in diagnostic procedures.