

## Anti-CD8 CD8A Rabbit Monoclonal Antibody

Catalog Number: M02236-1

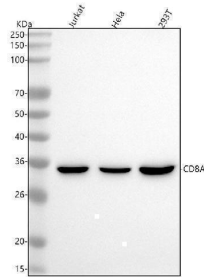
### Overview

Product Name	Anti-CD8 CD8A Rabbit Monoclonal Antibody
Reactive Species	Human, Rat
Description	Boster Bio Anti-CD8 CD8A Rabbit Monoclonal Antibody catalog # M02236-1. Tested in WB, IHC, ICC/IF applications. This antibody reacts with Human, Rat.
Application	IF, IHC, ICC, WB
Clonality	Monoclonal EAF-3
Formulation	Rabbit IgG in stabilizing components, phosphate buffered saline, pH 7.4, 150mM NaCl, 0.02% sodium azide and 50% glycerol. *This antibody is supplied in a stabilized formulation. Compatibility with conjugation reactions depends on the chemistry of the conjugation method used. For conjugation methods that are not compatible with the stabilizing components present in this formulation, a carrier-free antibody format is required.
Storage Instructions	Store at -20°C for one year. For short term storage and frequent use, store at 4°C for up to one month. Avoid repeated freeze-thaw cycles.
Host	Rabbit
Uniprot ID	P01732

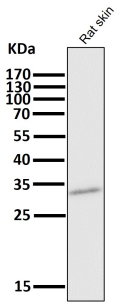
### Technical Details

Immunogen	A synthesized peptide derived from human CD8
Isotype	Rabbit IgG
Form	Liquid
Concentration	0.5mg/ml
Purification	Affinity-chromatography
Suggested Dilutions	WB 1:500-2000 IHC 1:50-200 ICC/IF 1:50-200

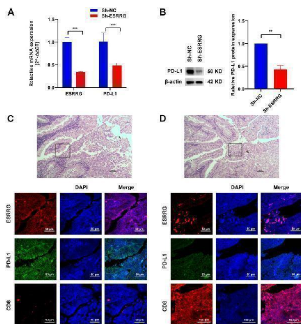
## Anti-CD8 CD8A Rabbit Monoclonal Antibody (M02236-1) Images



Western blot analysis of CD8A using anti-CD8A antibody (M02236-1). Electrophoresis was performed on a 5-20% SDS-PAGE gel at 70V (Stacking gel) / 90V (Resolving gel) for 2-3 hours. The sample well of each lane was loaded with 30 ug of sample under reducing conditions. Lane 1: human Jurkat whole cell lysates, Lane 2: human Hela whole cell lysates, Lane 3: human 293T whole cell lysates. After electrophoresis, proteins were transferred to a nitrocellulose membrane at 150 mA for 50-90 minutes. Blocked the membrane with 5% non-fat milk/TBS for 1.5 hour at RT. The membrane was incubated with rabbit anti-CD8A antigen affinity purified monoclonal antibody (Catalog # M02236-1) at 1:500 overnight at 4°C, then washed with TBS-0.1%Tween 3 times with 5 minutes each and probed with a goat anti-rabbit IgG-HRP secondary antibody at a dilution of 1:5000 for 1.5 hour at RT. The signal is developed using an Enhanced Chemiluminescent detection (ECL) kit (Catalog # EK1002) with Tanon 5200 system. A specific band was detected for CD8A at approximately 36 kDa. The expected band size for CD8A is at 26 kDa.

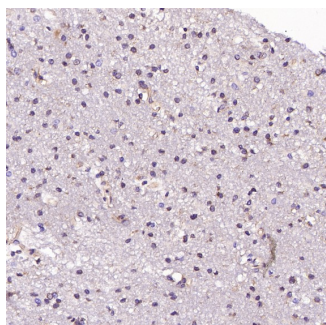
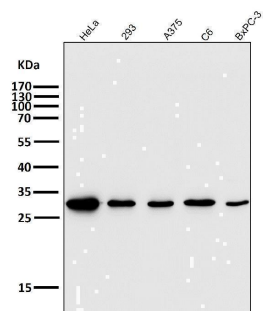


All lanes use the Antibody at 1:5K dilution for 1 hour at room temperature.

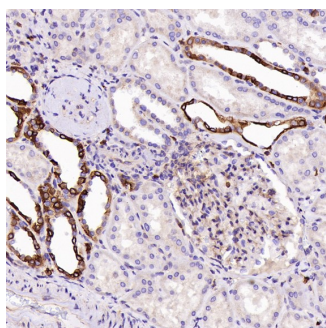


ESRRG is positively correlated with PD-L1. (A-B) The positive correlation between ESRRG and PD-L1 in GBC cells was investigated using Real-time PCR (A) and Western Blot (B). (C-D) The expressions of ESRRG, PD-L1 and CD8 were detected by immunofluorescence assay in GBC tissues. \*\*p < 0.01; \*\*\*p < 0.001; p < 0.05 was considered statistically significant. Index in PubMed under a CC BY license. PMID: 40356747

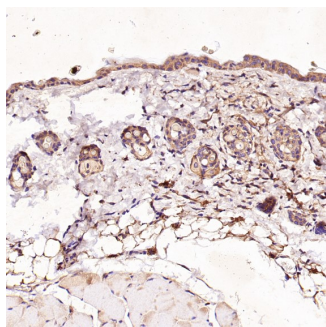
All lanes use the Antibody at 1:5K dilution for 1 hour at room temperature.



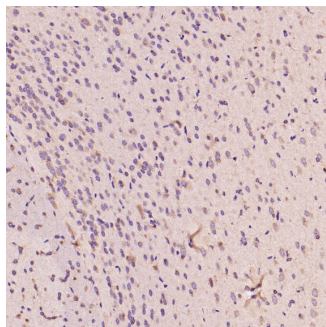
Immunohistochemical analysis of paraffin-embedded Human glioblastoma, using the Antibody at 1:600 dilution.



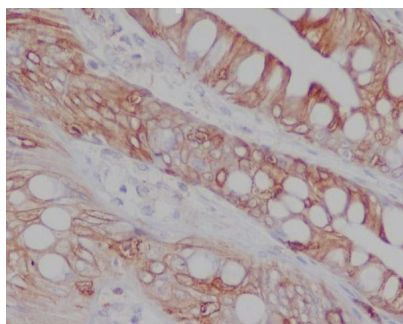
Immunohistochemical analysis of paraffin-embedded Human kidney, using the Antibody at 1:600 dilution.



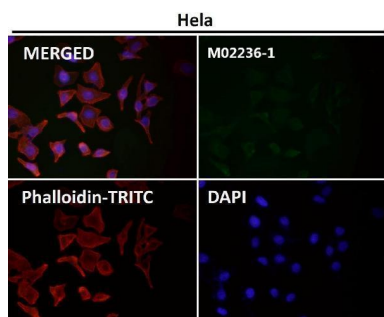
Immunohistochemical analysis of paraffin-embedded Mouse skin, using the Antibody at 1:100 dilution.



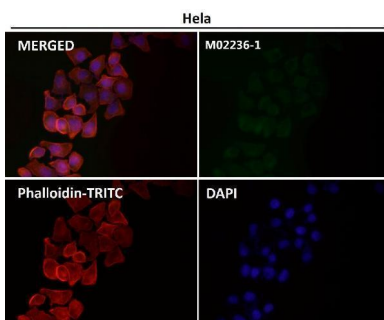
Immunohistochemical analysis of paraffin-embedded Rat kidney, using the Antibody at 1:100 dilution.



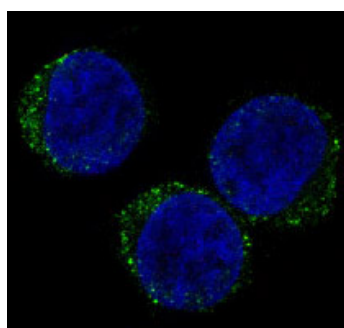
Immunohistochemical analysis of paraffin-embedded human colon, using CD8 Antibody.



Immunofluorescent analysis using the Antibody at 1:150 dilution.



Immunofluorescent analysis using the Antibody at 1:50 dilution.



Immunofluorescent analysis of Jurkat cells, using CD8 Antibody .

## 2 Publications Citing This Product

1. PubMed ID: 15133849, Effect of Hejie decoction on T cell immune state of chronic hepatitis B patients
2. PubMed ID: 25816072, Xu Y, Tan X, Wang D, Wang W, Li Y, Wu M, Chen S, Wu Y, Tan C. Int J Mol Med. 2015 Jun;35(6):1501-10. Doi: 10.3892/Ijmm.2015.2154. Epub 2015 Mar 24. Elevated Survivin Expression In Peripheral Blood Mononuclear Cells Is Central To Collateral Formati...

Visit [bosterbio.com/anti-cd8-rabbit-monoclonal-antibody-m02236-1-boster.html](http://bosterbio.com/anti-cd8-rabbit-monoclonal-antibody-m02236-1-boster.html) to see all 2 publications.

## Submit a product review to Biocompare.com

Submit a review of this product to Biocompare.com to receive a \$20 Amazon.com giftcard! Your reviews help your fellow scientists make the right decisions. Thank you for your contribution.



Anti-CD8 CD8A Rabbit Monoclonal Antibody

For Research Use Only. Not for use in diagnostic procedures.