

Anti-CD8 a Rabbit Monoclonal Antibody

Catalog Number: M02236-4

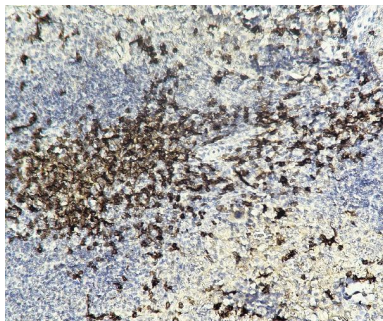
Overview

Product Name	Anti-CD8 a Rabbit Monoclonal Antibody
Reactive Species	Mouse
Description	This Recombinant Rabbit Monoclonal Antibody detects endogenous levels of CD8 a protein. Validated for research with IHC,WB,ELISA applications. Anti CD8 a is reactive for Mouse samples
Application	ELISA, IHC, WB
Clonality	Monoclonal
Formulation	PBS, 50% glycerol, 0.05% Proclin 300, 0.05% stabilizing protein This antibody is supplied in a stabilized formulation. Compatibility with conjugation reactions depends on the chemistry of the conjugation method used. For conjugation methods that are not compatible with the stabilizing components present in this formulation, a carrier-free antibody format is required.
Storage Instructions	Store at -20°C/1 year
Host	Rabbit
Uniprot ID	P01732

Technical Details

Isotype	IgG, Kappa
Purification	Protein A

Anti-CD8 a Rabbit Monoclonal Antibody (M02236-4) Images



Mouse spleen tissue was stained with anti-CD8 a rabbit Antibody

Submit a product review to Biocompare.com

Submit a review of this product to Biocompare.com to receive a \$20 Amazon.com giftcard! Your reviews help your fellow scientists make the right decisions. Thank you for your contribution.



Anti-CD8 a Rabbit Monoclonal Antibody

For Research Use Only. Not for use in diagnostic procedures.