

Anti-Hemopexin HPX Monoclonal Antibody

Catalog Number: M02237

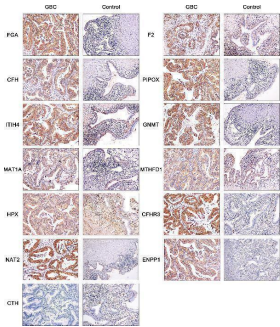
Overview

Product Name	Anti-Hemopexin HPX Monoclonal Antibody
Reactive Species	Human
Description	Boster Bio Anti-Hemopexin HPX Monoclonal Antibody catalog # M02237. Tested in WB, IHC, ICC/IF, IP applications. This antibody reacts with Human.
Application	IP, IF, IHC, ICC, WB
Clonality	Monoclonal ADAD-8
Formulation	Rabbit IgG in stabilizing components, phosphate buffered saline, pH 7.4, 150mM NaCl, 0.02% sodium azide and 50% glycerol. *This antibody is supplied in a stabilized formulation. Compatibility with conjugation reactions depends on the chemistry of the conjugation method used. For conjugation methods that are not compatible with the stabilizing components present in this formulation, a carrier-free antibody format is required.
Storage Instructions	Store at -20°C for one year. For short term storage and frequent use, store at 4°C for up to one month. Avoid repeated freeze-thaw cycles.
Host	Rabbit
Uniprot ID	P02790

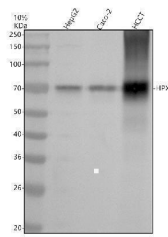
Technical Details

Immunogen	A synthesized peptide derived from human Hemopexin Binds heme and transports it to the liver for breakdown and iron recovery, after which the free hemopexin returns to the circulation.
Isotype	Rabbit IgG
Form	Liquid
Concentration	0.5mg/ml
Purification	Affinity-chromatography
Suggested Dilutions	WB 1:500-2000 IHC 1:50-200 ICC/IF 1:50-200 IP 1:20

Anti-Hemopexin HPX Monoclonal Antibody (M02237) Images



Immunohistochemistry of FGA, F2, CFH, PIPOX, ITIH4, GNMT, MAT1A, MTHFD1, HPX, CTH, CFHR3, ENNP1, and NAT2 in clinical GBC and control specimens. Index in PubMed under a CC BY license. PMID: 33718182



Western blot analysis of Hemopexin/HPX using anti-Hemopexin/HPX antibody (M02237). Electrophoresis was performed on a 10% SDS-PAGE gel at 80V (Stacking gel) / 120V (Resolving gel) for 2 hours. The sample well of each lane was loaded with 30 ug of sample under reducing conditions. Lane 1: human HepG2 whole cell lysates, Lane 2: human Caco-2 whole cell lysates, Lane 3: human hepatocellular carcinoma tumor tissue (HCCT) lysates. After electrophoresis, proteins were transferred to a nitrocellulose membrane at 150 mA for 50-90 minutes. Blocked the membrane with 5% non-fat milk/TBS for 1.5 hour at RT. The membrane was incubated with rabbit anti-Hemopexin/HPX antigen affinity purified monoclonal antibody (M02237) at 1:1000 overnight at 4°C, then washed with TBS-0.1% Tween 3 times with 5 minutes each and probed with a goat anti-rabbit IgG-HRP secondary antibody at a dilution of 1:5000 for 1.5 hour at RT. The signal is developed using an ECL Plus Western Blotting Substrate (Catalog # AR1196-200) with Tanon 5200 system. A specific band was detected for Hemopexin/HPX at approximately 70 kDa. The expected band size for Hemopexin/HPX is at 52 kDa.

1 Publications Citing This Product

1. PubMed ID: -, Wu T, Wang X, Ren K, Huang X, Liu J: The Alterations in Methylene Blue/Light-Treated Frozen Plasma Proteins Revealed by Proteomics. *Transfus Med Hemother* 2021. doi:10.1159/000515119.

Visit bosterbio.com/anti-hemopexin-antibody-m02237-boster.html to see all 1 publications.

Submit a product review to Biocompare.com

Submit a review of this product to Biocompare.com to receive a \$20 Amazon.com giftcard! Your reviews help your fellow scientists make the right decisions. Thank you for your contribution.



Anti-Hemopexin HPX Monoclonal Antibody

For Research Use Only. Not for use in diagnostic procedures.