

Anti-ARG2 Mouse Monoclonal Antibody [Clone ID: OTI3G5]

Catalog Number: M02244

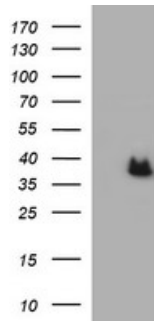
Overview

Product Name	Anti-ARG2 Mouse Monoclonal Antibody [Clone ID: OTI3G5]
Reactive Species	Dog, Human, Rat
Description	Boster Bio ARG2 mouse monoclonal antibody, clone OTI3G5 (formerly 3G5). Catalog# M02244. Tested in IF, IHC, WB. This antibody reacts with Human, Rat, Dog.
Application	IF, IHC, WB
Clonality	Monoclonal OTI3G5
Formulation	PBS (PH 7.3) containing 1% BSA, 50% glycerol and 0.02% sodium azide.
Storage Instructions	Store at -20°C as received.
Host	Mouse
Uniprot ID	P78540

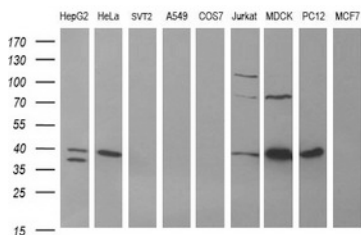
Technical Details

Immunogen	Full length human recombinant protein of human ARG2 (NP_001163) produced in HEK293T cell.
Isotype	IgG1
Concentration	1 mg/ml
Purification	Purified from mouse ascites fluids or tissue culture supernatant by affinity chromatography (protein A/G)
Suggested Dilutions	Dilute the sample so that the expected range of concentrations fall within the detection range of this kit. If the expected range of concentration is unknown, a pilot test should be conducted to decide the optimal dilution ratio for your samples. Some PubMed article(s) citing the expression level of this target are as follows:

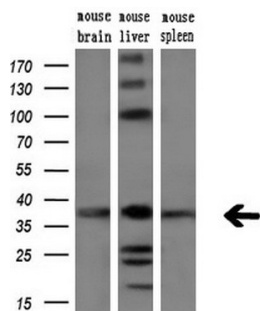
Anti-ARG2 Mouse Monoclonal Antibody [Clone ID: OTI3G5] (M02244) Images



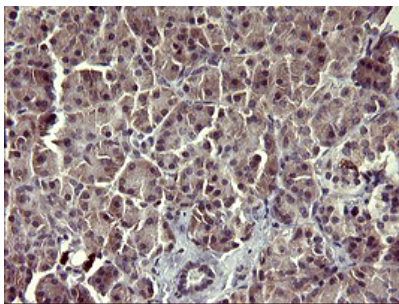
HEK293T cells were transfected with the pCMV6-ENTRY control (Left lane) or pCMV6-ENTRY ARG2 (Right lane) cDNA for 48 hrs and lysed. Equivalent amounts of cell lysates (5 ug per lane) were separated by SDS-PAGE and immunoblotted with anti-ARG2.



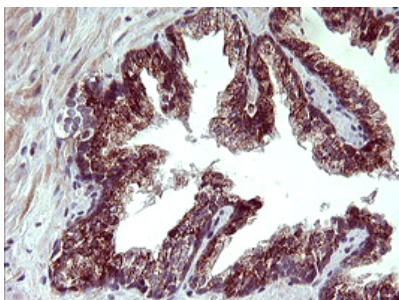
Western blot analysis of extracts (35ug) from 9 different cell lines by using anti-ARG2 monoclonal antibody (HepG2: human; HeLa: human; SVT2: mouse; A549: human; COS7: monkey; Jurkat: human; MDCK: canine; PC12: rat; MCF7: human).



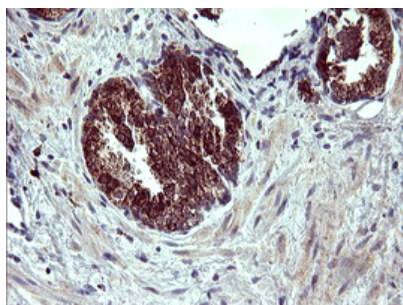
Western blot analysis of extracts (10ug) from 3 different mouse tissues by using anti-ARG2 monoclonal antibody (1:200).



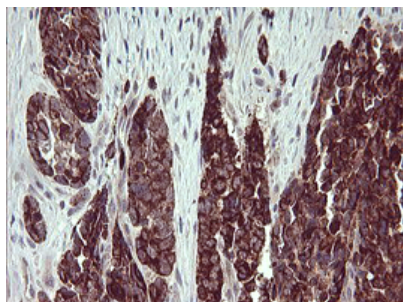
Immunohistochemical staining of paraffin-embedded Human pancreas tissue within the normal limits using anti-ARG2 mouse monoclonal antibody. (Heat-induced epitope retrieval by 10mM citric buffer)



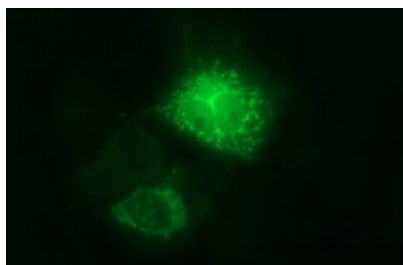
Immunohistochemical staining of paraffin-embedded Human prostate tissue within the normal limits using anti-ARG2 mouse monoclonal antibody. (Heat-induced epitope retrieval by 10mM citric buffer)



Immunohistochemical staining of paraffin-embedded Carcinoma of Human prostate tissue using anti-ARG2 mouse monoclonal antibody. (Heat-induced epitope retrieval by 10mM citric buffer)



Immunohistochemical staining of paraffin-embedded Adenocarcinoma of Human colon tissue using anti-ARG2 mouse monoclonal antibody. (Heat-induced epitope retrieval by 10mM citric buffer)



Anti-ARG2 mouse monoclonal antibody (M02244) immunofluorescent staining of COS7 cells transiently transfected by pCMV6-ENTRY ARG2.

Submit a product review to Biocompare.com

Submit a review of this product to Biocompare.com to receive a \$20 Amazon.com giftcard! Your reviews help your fellow scientists make the right decisions. Thank you for your contribution.



Anti-ARG2 Mouse Monoclonal Antibody [Clone ID: OT13G5]